

Product datasheet for **AP22989PU-N**

SPRED1 Rabbit Polyclonal Antibody

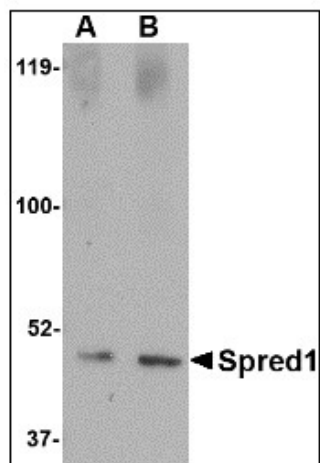
Product data:

Product Type:	Primary Antibodies
Applications:	IHC, WB
Recommended Dilution:	Immunohistochemistry on Paraffin Sections: 5 µg/ml. Western Blot: 1 - 2 µg/ml.
Reactivity:	Human, Mouse, Rat
Host:	Rabbit
Clonality:	Polyclonal
Immunogen:	SPRED1 antibody was raised against spread1 antibody was raised against a 14 amino acid peptide near the center of the human Spread1.
Specificity:	This antibody reacts to Sprouty-related, EVH1 Domain-containing Protein 1 (SPRED1).
Formulation:	PBS containing 0.02% sodium azide as preservative State: Purified State: Liquid purified Ig fraction
Concentration:	lot specific
Purification:	Immunoaffinity Chromatography
Conjugation:	Unconjugated
Storage:	Store the antibody at -20°C. Avoid repeated freezing and thawing.
Stability:	Shelf life: one year from despatch.
Gene Name:	sprouty related EVH1 domain containing 1
Database Link:	Entrez Gene 114715 Mouse Entrez Gene 296072 Rat Entrez Gene 161742 Human Q7Z699
Synonyms:	Spred-1, NFLS
Protein Pathways:	Jak-STAT signaling pathway

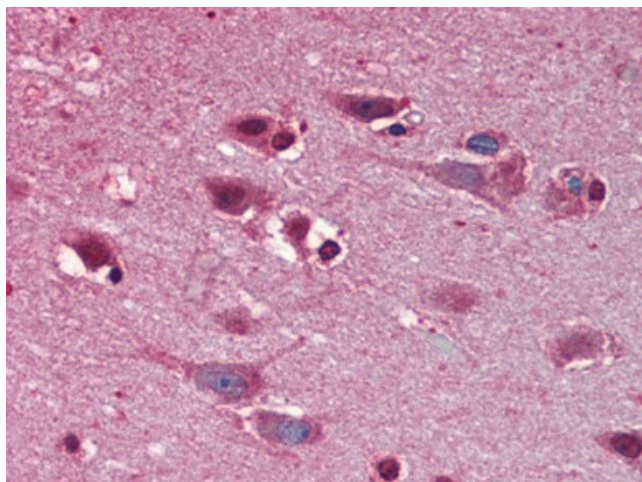


[View online »](#)

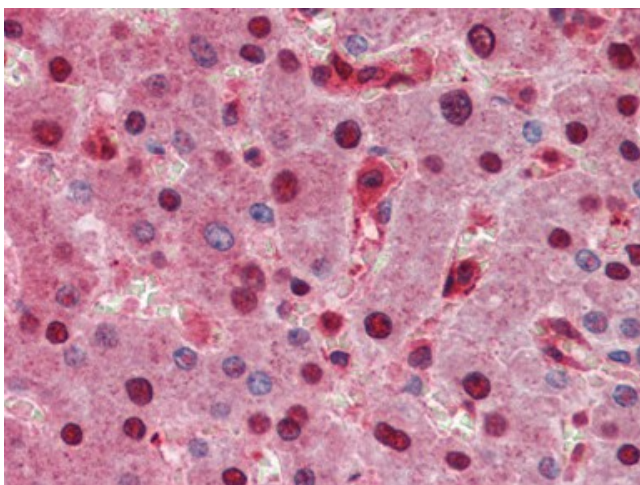
Product images:



Western blot analysis of Spred1 in human brain tissue lysate with Spred1 antibody at (A) 1 and (B) 2 ug/ml.



Human Brain, cortex: Formalin-Fixed, Paraffin-Embedded (FFPE)



Human Liver: Formalin-Fixed, Paraffin-Embedded (FFPE)