

Product datasheet for **AP22987PU-N**

AAK1 (N-term) Rabbit Polyclonal Antibody

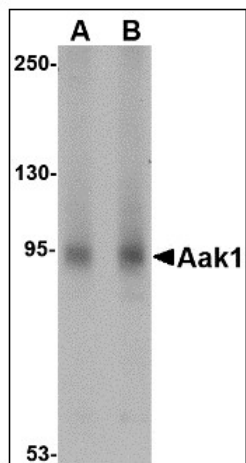
Product data:

Product Type:	Primary Antibodies
Applications:	IF, IHC, WB
Recommended Dilution:	Immunocytochemistry. Immunohistochemistry on Paraffin Sections: 5 µg/ml. Western Blot: 1 - 2 µg/ml.
Reactivity:	Human, Mouse, Rat
Host:	Rabbit
Clonality:	Polyclonal
Immunogen:	AAK1 antibody was raised against aak1 antibody was raised against a 20 amino acid peptide near the amino terminus of the human Aak1.
Specificity:	This antibody reacts to Adaptor-Associated Kinase 1 (AAK1).
Formulation:	PBS containing 0.02% sodium azide State: Purified State: Liquid purified Ig fraction
Concentration:	lot specific
Purification:	Immunoaffinity Chromatography
Conjugation:	Unconjugated
Storage:	Store the antibody at -20°C. Avoid repeated freezing and thawing.
Stability:	Shelf life: one year from despatch.
Gene Name:	AP2 associated kinase 1
Database Link:	Entrez Gene 269774 Mouse Entrez Gene 500244 Rat Entrez Gene 22848 Human Q2M2I8
Synonyms:	AP2-associated protein kinase 1, KIAA1048
Protein Families:	Druggable Genome, Protein Kinase

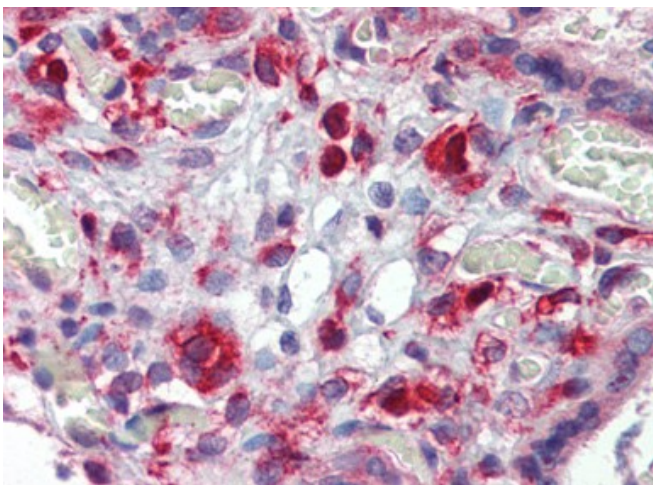


[View online »](#)

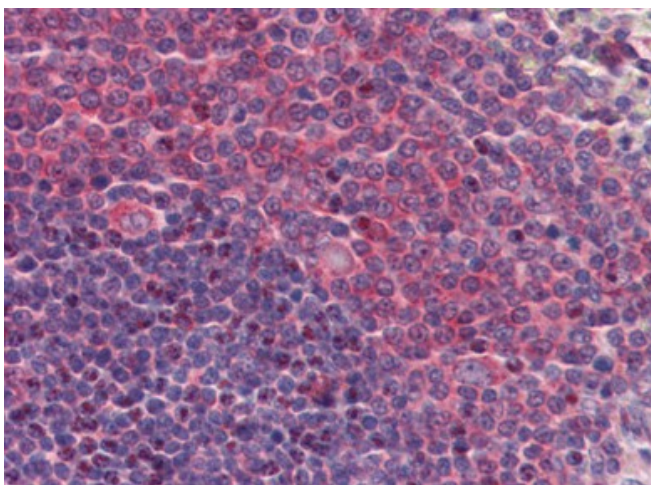
Product images:



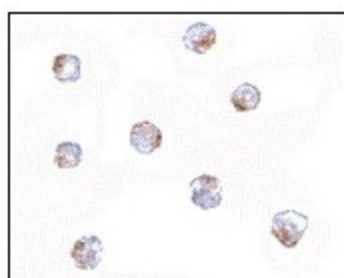
Western blot analysis of Aak1 in A-20 lysate with Aak1 antibody (AP22987PU-N) at (A) 1 and (B) 2 ug/ml.



Human Placenta: Formalin-Fixed, Paraffin-Embedded (FFPE)



Human Spleen: Formalin-Fixed, Paraffin-Embedded (FFPE)



Immunocytochemistry in A-20 cells with Aak1 antibody (AP22987PU-N) at 5 ug/ml.