

Product datasheet for **AP22985PU-N**

CUEDC2 (C-term) Rabbit Polyclonal Antibody

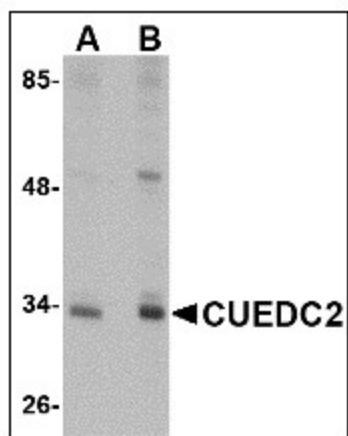
Product data:

Product Type:	Primary Antibodies
Applications:	ELISA, IF, IHC, WB
Recommended Dilution:	ELISA. Immunocytochemistry. Immunohistochemistry on Paraffin Sections: 5 µg/ml. Western Blot: 1 - 2 µg/ml.
Reactivity:	Human, Mouse, Rat
Host:	Rabbit
Clonality:	Polyclonal
Immunogen:	CUEDC2 antibody was raised against cUEDC2 antibody was raised against a 19 amino acid peptide from near the carboxy terminus of human CUEDC2.
Specificity:	This antibody reacts to CUE Domain Containing 2 (CUEDC2).
Formulation:	PBS containing 0.02% sodium azide State: Purified State: Liquid purified Ig fraction
Concentration:	lot specific
Purification:	Immunoaffinity Chromatography
Conjugation:	Unconjugated
Storage:	Store the antibody undiluted at 2-8°C for one month or (in aliquots) at -20°C for longer. Avoid repeated freezing and thawing.
Stability:	Shelf life: one year from despatch.
Gene Name:	CUE domain containing 2
Database Link:	Entrez Gene 67116 Mouse Entrez Gene 294009 Rat Entrez Gene 79004 Human Q9H467
Synonyms:	C10orf66, HOYS6

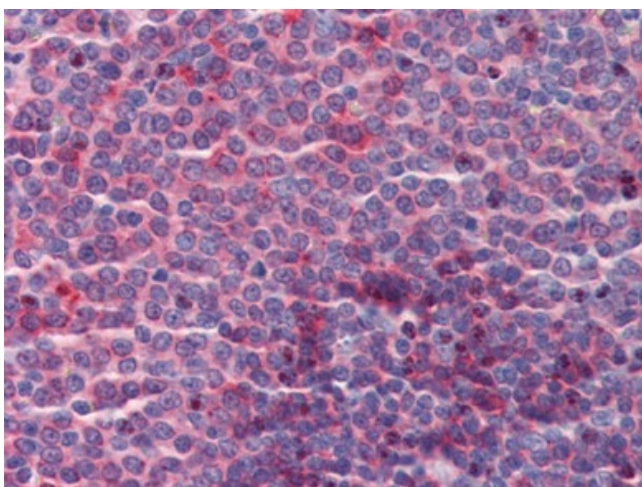


[View online »](#)

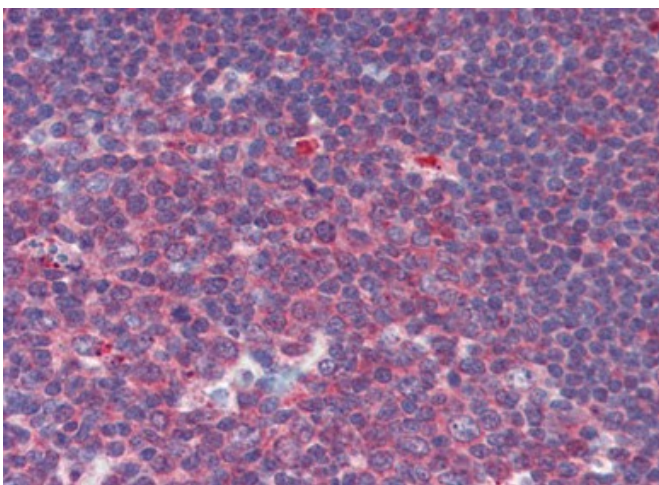
Product images:



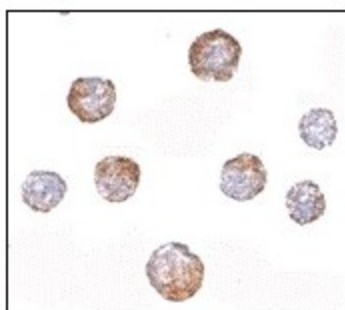
Western blot analysis of CUEDC2 in HeLa cell lysate with CUEDC2 antibody at (A) 1 and (B) 2 ug/ml



Human Spleen: Formalin-Fixed, Paraffin-Embedded (FFPE)



Human Tonsil: Formalin-Fixed, Paraffin-Embedded (FFPE)



Immunocytochemistry in HeLa cells with CUEDC2 antibody at 5 ug/ml.