

## Product datasheet for **AP22982PU-N**

### Integrin alpha 4 (ITGA4) Rabbit Polyclonal Antibody

#### Product data:

Product Type:	Primary Antibodies
Applications:	IF, IHC, WB
Recommended Dilution:	<b>Immunofluorescence.</b> <b>Immunohistochemistry on Paraffin Sections:</b> 5 µg/ml. <b>Western Blot:</b> 0.5 - 1 µg/ml.
Reactivity:	Human, Mouse, Rat
Host:	Rabbit
Clonality:	Polyclonal
Immunogen:	Synthetic peptide (GNSAGPKSMEVSC) from (C-term) of human NDRG1
Specificity:	This antibody reacts to Integrin, Alpha 4 (antigen CD49D, Alpha 4 Subunit Of VLA-4 Receptor) (ITGA4).
Formulation:	PBS containing 0.02% sodium azide State: Purified State: Liquid purified Ig fraction
Concentration:	lot specific
Purification:	Immunoaffinity Chromatography
Conjugation:	Unconjugated
Storage:	Store the antibody at -20°C. Avoid repeated freezing and thawing.
Stability:	Shelf life: one year from despatch.
Gene Name:	integrin subunit alpha 4
Database Link:	<u><a href="#">Entrez Gene 16401 Mouse</a></u> <u><a href="#">Entrez Gene 311144 Rat</a></u> <u><a href="#">Entrez Gene 3676 Human</a></u> <u><a href="#">P13612</a></u>



[View online »](#)

**Background:**

ITGA4 encodes integrin alpha chain 4. Integrins are heterodimeric integral membrane proteins composed of an alpha chain and a beta chain. Unlike other integrin alpha chains, alpha 4 neither contains an I-domain, nor undergoes disulfide-linked cleavage. Although alpha 4 is variably cleaved to yield two unlinked chains, this cleavage is unnecessary for integrin assembly and function. Alpha 4 combines with beta 1 (ITGB1) on T-cells to form the integrin very late (activation) antigen 4 (VLA-4) that can bind to the extracellular matrix molecules fibronectin or thrombospondin, and is also a ligand for the cell surface molecule vascular cell adhesion molecule 1 (VCAM-1). In addition, alpha 4 combines with beta 7 to form the lymphocyte homing receptor known as LPAM-1 (lymphocyte Peyer Patch adhesion molecule 1). Integrins are also known to participate in cell-surface mediated signalling.

**Synonyms:**

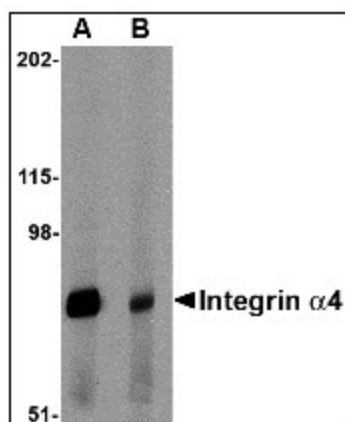
Integrin alpha-4, Integrin alpha-IV, VLA-4, VLA4

**Protein Families:**

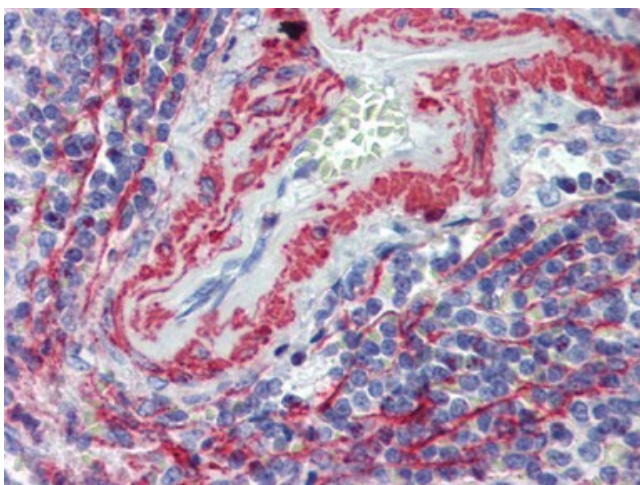
Druggable Genome, ES Cell Differentiation/IPS, Transmembrane

**Protein Pathways:**

Arrhythmogenic right ventricular cardiomyopathy (ARVC), Cell adhesion molecules (CAMs), Dilated cardiomyopathy, ECM-receptor interaction, Focal adhesion, Hematopoietic cell lineage, Hypertrophic cardiomyopathy (HCM), Leukocyte transendothelial migration, Regulation of actin cytoskeleton

**Product images:**

Western blot analysis of Integrin alpha 4 in rat spleen tissue lysate with Integrin alpha 4 antibody (AP22982PU-N) at 1 ug/ml in (A) the absence and (B) the presence of blocking peptide.



Human Spleen: Formalin-Fixed, Paraffin-Embedded (FFPE)