

## Product datasheet for **AP22978PU-N**

### **AAK1 (C-term) Rabbit Polyclonal Antibody**

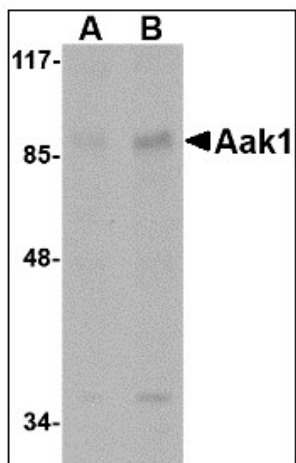
#### **Product data:**

Product Type:	Primary Antibodies
Applications:	IHC, WB
Recommended Dilution:	<b>Immunohistochemistry on Paraffin Sections:</b> 5 µg/ml. <b>Western Blot:</b> 1 - 2 µg/ml.
Reactivity:	Human, Mouse, Rat
Host:	Rabbit
Clonality:	Polyclonal
Immunogen:	AAK1 antibody was raised against aak1 antibody was raised against an 18 amino acid peptide near the carboxy terminus of the human Aak1.
Specificity:	This antibody reacts to Adaptor-Associated Kinase 1 (AAK1).
Formulation:	PBS containing 0.02% sodium azide State: Purified State: Liquid purified Ig fraction
Concentration:	lot specific
Purification:	Immunoaffinity Chromatography
Conjugation:	Unconjugated
Storage:	Store the antibody at -20°C. Avoid repeated freezing and thawing.
Stability:	Shelf life: one year from despatch.
Gene Name:	AP2 associated kinase 1
Database Link:	<a href="#">Entrez Gene 269774 Mouse</a> <a href="#">Entrez Gene 500244 Rat</a> <a href="#">Entrez Gene 22848 Human Q2M2I8</a>
Synonyms:	AP2-associated protein kinase 1, KIAA1048
Protein Families:	Druggable Genome, Protein Kinase

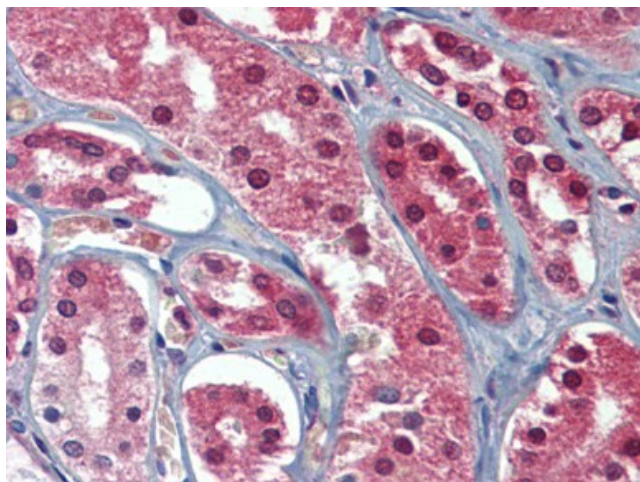


[View online »](#)

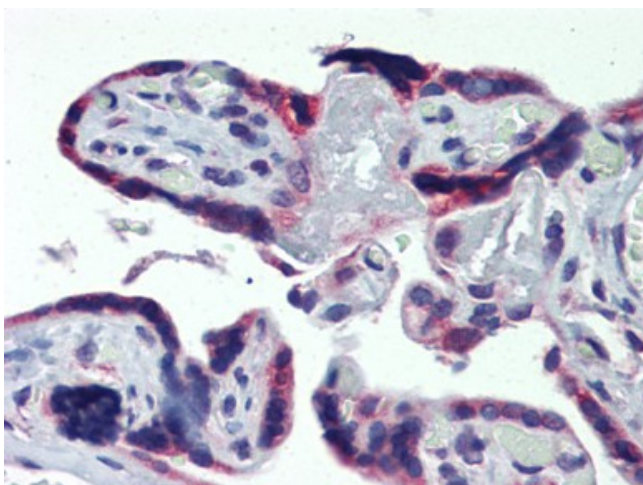
## Product images:



Western blot analysis of Aak1 in A-20 lysate with Aak1 antibody (AP22978PU-N) at (A) 1 and (B) 2 ug/ml.



Human Kidney: Formalin-Fixed, Paraffin-Embedded (FFPE)



Human Placenta: Formalin-Fixed, Paraffin-Embedded (FFPE)