

Product datasheet for **AP22975PU-N**

PSMB5 Goat Polyclonal Antibody

Product data:

Product Type:	Primary Antibodies
Applications:	IHC
Recommended Dilution:	Immunohistochemistry on Paraffin Sections: 3.75 µg/ml.
Reactivity:	Human, Bovine, Bat, Canine, Equine, Hamster, Monkey, Mouse, Porcine, Rabbit, Rat, Xenopus, Zebrafish
Host:	Goat
Clonality:	Polyclonal
Immunogen:	PSMB5 antibody was raised against synthetic peptide from human PSMB5 / MB1
Specificity:	This antibody reacts to Proteasome (Prosome, Macropain) Subunit, Beta Type 5 (PSMB5).
Formulation:	Tris saline buffer, pH 7.3 containing 0.5% BSA and 0.02% sodium azide. State: Aff - Purified State: Liquid purified Ig fraction
Concentration:	lot specific
Purification:	Immunoaffinity Chromatography
Conjugation:	Unconjugated
Storage:	Store the antibody undiluted at 2-8°C for one month or (in aliquots) at -20°C for longer. Avoid repeated freezing and thawing.
Stability:	Shelf life: one year from despatch.
Gene Name:	proteasome subunit beta 5
Database Link:	Entrez Gene 19173 Mouse Entrez Gene 29425 Rat Entrez Gene 5693 Human P28074
Background:	The proteasome is a multicatalytic proteinase complex with a highly ordered ring-shaped 20S core structure. The core structure is composed of 4 rings of 28 non-identical subunits; 2 rings are composed of 7 alpha subunits and 2 rings are composed of 7 beta subunits. Proteasomes are distributed throughout eukaryotic cells at a high concentration and cleave peptides in an ATP/ubiquitin-dependent process in a non-lysosomal pathway.



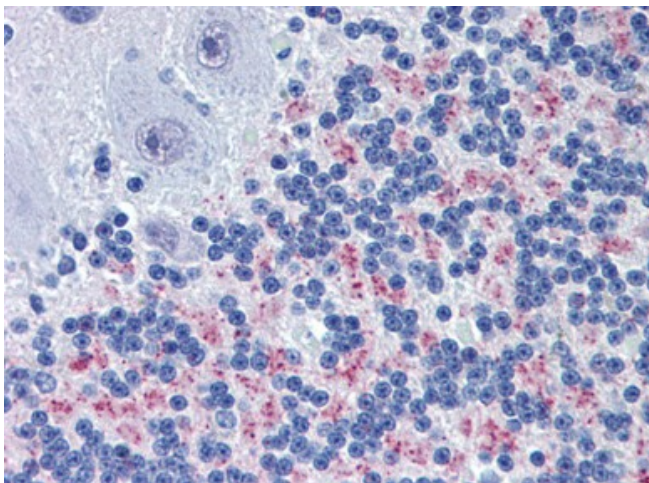
[View online »](#)

Synonyms: Proteasome subunit beta type-5, Proteasome 20S X, Macropain epsilon chain, Proteasome chain 6, Proteasome epsilon chain, Proteasome subunit MB1, Proteasome subunit X, LMPX, MB1

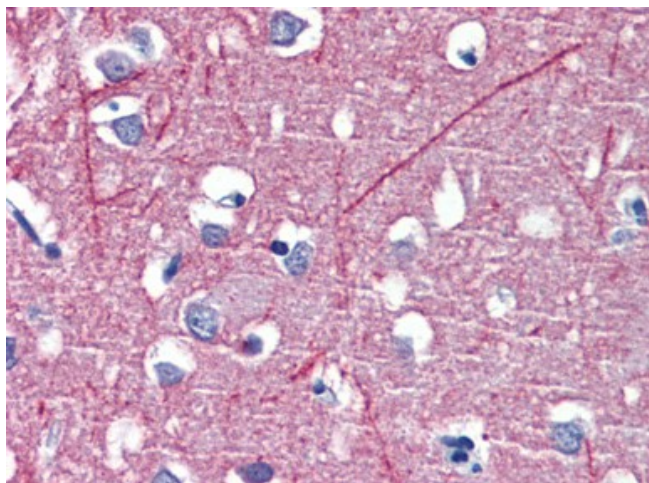
Protein Families: Protease

Protein Pathways: Proteasome

Product images:



Brain, cerebellum, Human: Formalin-Fixed, Paraffin-Embedded (FFPE)



Brain, cortex, Human: Formalin-Fixed, Paraffin-Embedded (FFPE)