

Product datasheet for **AP22973PU-N**

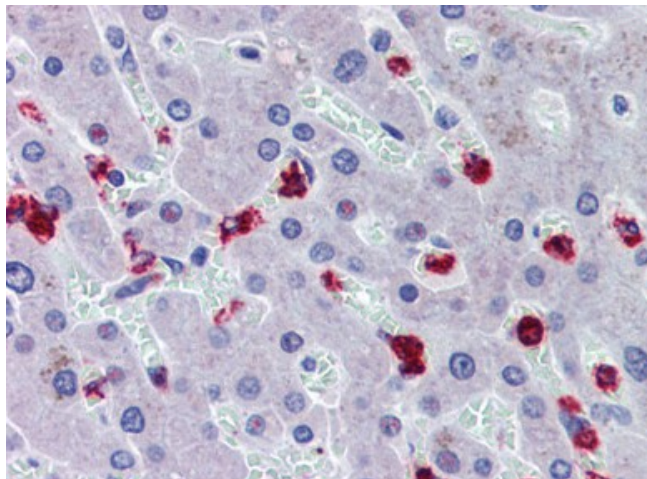
RASSF2 (11-22) Goat Polyclonal Antibody

Product data:

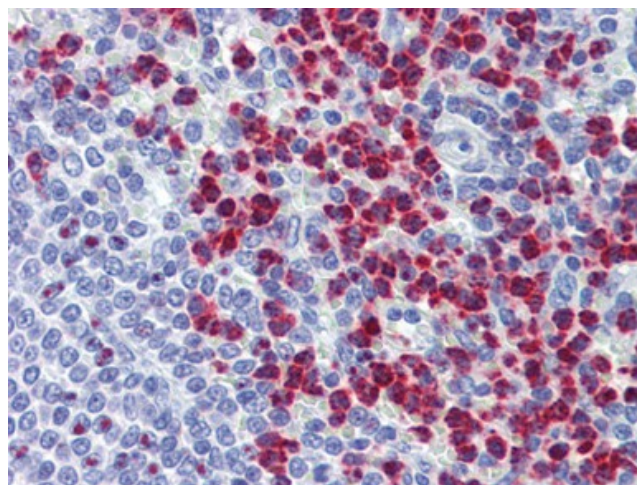
Product Type:	Primary Antibodies
Applications:	IHC
Recommended Dilution:	Immunohistochemistry on Paraffin Sections: 3.75 µg/ml.
Reactivity:	Human, Bovine, Canine, Equine, Monkey, Porcine, Rabbit
Host:	Goat
Clonality:	Polyclonal
Immunogen:	RASSF2 antibody was raised against synthetic peptide from the N-terminus of human RASSF2 (NP_055552.1; NP_739580.1).
Specificity:	This antibody reacts to Ras Association (RaIGDS/AF-6) Domain Family 2 (RASSF2) at N-terminus.
Formulation:	Tris saline buffer, pH 7.3 containing 0.5% BSA and 0.02% sodium azide State: Aff - Purified State: Liquid purified Ig fraction
Concentration:	lot specific
Purification:	Immunoaffinity Chromatography
Conjugation:	Unconjugated
Storage:	Store the antibody undiluted at 2-8°C for one month or (in aliquots) at -20°C for longer. Avoid repeated freezing and thawing.
Stability:	Shelf life: one year from despatch.
Gene Name:	Ras association domain family member 2
Database Link:	Entrez Gene 9770 Human P50749
Background:	Potential tumor suppressor. Acts as a KRAS-specific effector protein. May promote apoptosis and cell cycle arrest. Stabilizes STK3/MST2 by protecting it from proteasomal degradation.
Synonyms:	KIAA0168



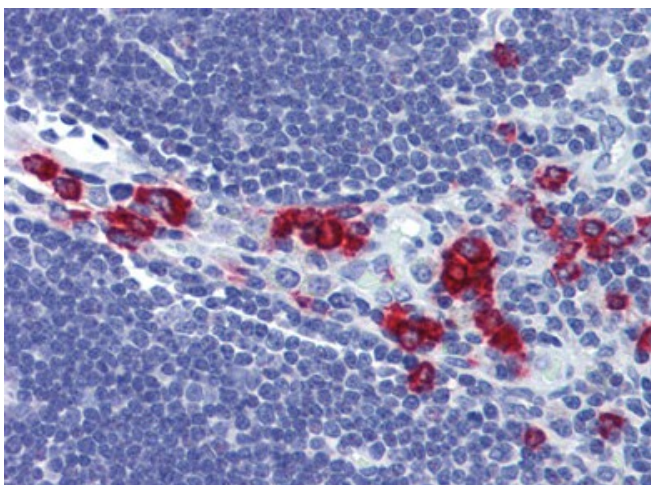
[View online »](#)

Product images:

Liver, Human: Formalin-Fixed, Paraffin-Embedded (FFPE)



Spleen, Human: Formalin-Fixed, Paraffin-Embedded (FFPE)



Thymus, Human: Formalin-Fixed, Paraffin-Embedded (FFPE)