

Product datasheet for **AP22972PU-N**

HCP1 (SLC46A1) (57-70) Goat Polyclonal Antibody

Product data:

Product Type:	Primary Antibodies
Applications:	IHC
Recommended Dilution:	Immunohistochemistry on Paraffin Sections: 3.75 µg/ml.
Reactivity:	Human
Host:	Goat
Clonality:	Polyclonal
Immunogen:	SLC46A1 / HCP1 antibody was raised against synthetic peptide from an internal region of human SLC46A1 / HCP1 (NP_542400.2).
Specificity:	This antibody reacts to an internal region of Solute Carrier Family 46 (Folate Transporter), Member 1 (SLC46A1).
Formulation:	Tris saline buffer, pH 7.3 containing 0.5% BSA and 0.02% sodium azide State: Aff - Purified State: Liquid purified Ig fraction
Concentration:	lot specific
Purification:	Immunoaffinity purified
Conjugation:	Unconjugated
Storage:	Store the antibody undiluted at 2-8°C for one month or (in aliquots) at -20°C for longer. Avoid repeated freezing and thawing.
Stability:	Shelf life: one year from despatch.
Gene Name:	solute carrier family 46 member 1
Database Link:	Entrez Gene 113235 Human Q96NT5
Background:	SLC46A1 / HCP1 is a transmembrane proton-coupled folate transporter protein that facilitates the movement of folate and antifolate substrates across cell membranes, optimally in acidic pH environments. This protein is also expressed in the brain and choroid plexus where it transports folates into the central nervous system. This protein further functions as a heme transporter in duodenal enterocytes, and potentially in other tissues like liver and kidney.

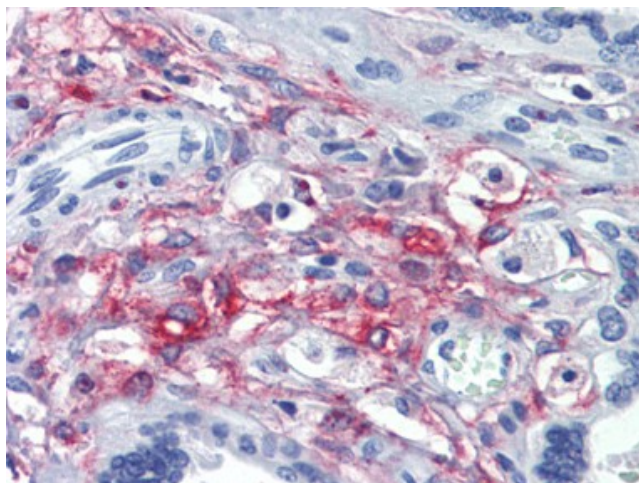


[View online »](#)

Synonyms: PCFT, G21

Protein Families: Transmembrane

Product images:



Placenta, Human: Formalin-Fixed, Paraffin-Embedded (FFPE)