

## Product datasheet for **AP22969PU-N**

### **SRC3 (NCOA3) (188-198) Goat Polyclonal Antibody**

#### **Product data:**

Product Type:	Primary Antibodies
Applications:	IHC
Recommended Dilution:	<b>Immunohistochemistry on Paraffin Sections:</b> 3.75 µg/ml.
Reactivity:	Human, Bovine, Bat, Canine, Hamster, Monkey, Porcine
Host:	Goat
Clonality:	Polyclonal
Immunogen:	SPG15 antibody was raised against a 16 amino acid peptide near the carboxy terminus of human SPG15
Specificity:	This antibody reacts to an internal region of Nuclear Receptor Coactivator 3 (NCOA3).
Formulation:	Tris saline buffer, pH 7.3 containing 0.5% BSA and 0.02% sodium azide State: Aff - Purified State: Liquid purified Ig fraction
Concentration:	lot specific
Purification:	Immunoaffinity Chromatography
Conjugation:	Unconjugated
Storage:	Store the antibody undiluted at 2-8°C for one month or (in aliquots) at -20°C for longer. Avoid repeated freezing and thawing.
Stability:	Shelf life: one year from despatch.
Gene Name:	nuclear receptor coactivator 3
Database Link:	<a href="#">Entrez Gene 8202 Human Q9Y6Q9</a>
Background:	The protein encoded by this gene is a nuclear receptor coactivator that interacts with nuclear hormone receptors to enhance their transcriptional activator functions. The encoded protein has histone acetyltransferase activity and recruits p300/CBP-associated factor and CREB binding protein as part of a multisubunit coactivation complex. This protein is initially found in the cytoplasm but is translocated into the nucleus upon phosphorylation. Two transcript variants encoding different isoforms have been found for this gene. In addition, a polymorphic repeat region is found in the C-terminus of the encoded protein.

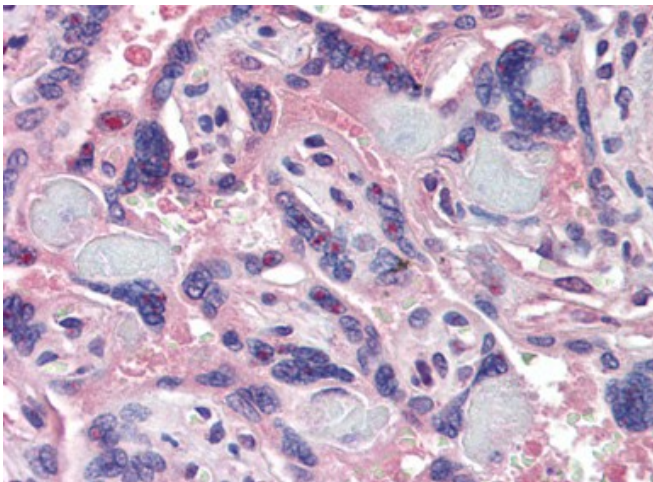


[View online »](#)

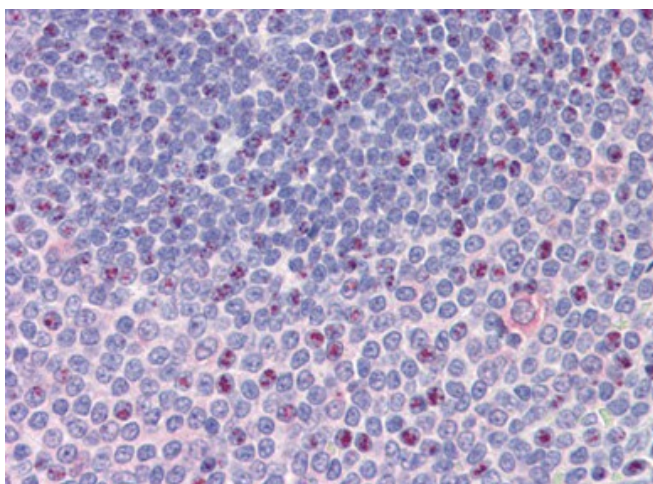
**Synonyms:** NCoA-3, Nuclear receptor coactivator 3, SRC-3, Steroid receptor coactivator protein 3, TRAM-1, TRAM1, RAC-3, RAC3, AIB-1, AIB1, pCIP, ACTR, BHLHE42

**Protein Families:** Druggable Genome, Transcription Factors

**Product images:**



Placenta, Human: Formalin-Fixed, Paraffin-Embedded (FFPE)



Spleen, Human: Formalin-Fixed, Paraffin-Embedded (FFPE)