

## Product datasheet for **AP22952PU-N**

### ALDH3A1 (C-term) Rabbit Polyclonal Antibody

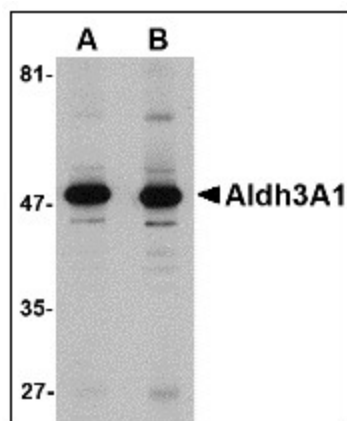
#### Product data:

Product Type:	Primary Antibodies
Applications:	IHC, WB
Recommended Dilution:	<b>Immunohistochemistry on Paraffin Sections:</b> 5 µg/ml. <b>Western Blot:</b> 1 - 2 µg/ml.
Reactivity:	Human, Mouse, Rat
Host:	Rabbit
Clonality:	Polyclonal
Immunogen:	ALDH3A1 antibody was raised against aldh3A1 antibody was raised against a 13 amino acid peptide near the carboxy terminus of the human Aldh3A1.
Specificity:	This antibody reacts to Aldehyde Dehydrogenase, Dimeric NADP-preferring (ALDH3A1).
Formulation:	PBS containing 0.02% sodium azide State: Purified State: Liquid purified Ig fraction
Concentration:	lot specific
Purification:	Immunoaffinity Chromatography
Conjugation:	Unconjugated
Storage:	Store the antibody at -20°C. Avoid repeated freezing and thawing.
Stability:	Shelf life: one year from despatch.
Gene Name:	aldehyde dehydrogenase 3 family member A1
Database Link:	<a href="#">Entrez Gene 11670 Mouse</a> <a href="#">Entrez Gene 25375 Rat</a> <a href="#">Entrez Gene 218 Human P30838</a>
Synonyms:	ALDH3A1, Aldehyde dehydrogenase 3, ALDHIII
Protein Families:	Druggable Genome
Protein Pathways:	Drug metabolism - cytochrome P450, Glycolysis / Gluconeogenesis, Histidine metabolism, Metabolic pathways, Metabolism of xenobiotics by cytochrome P450, Phenylalanine metabolism, Tyrosine metabolism

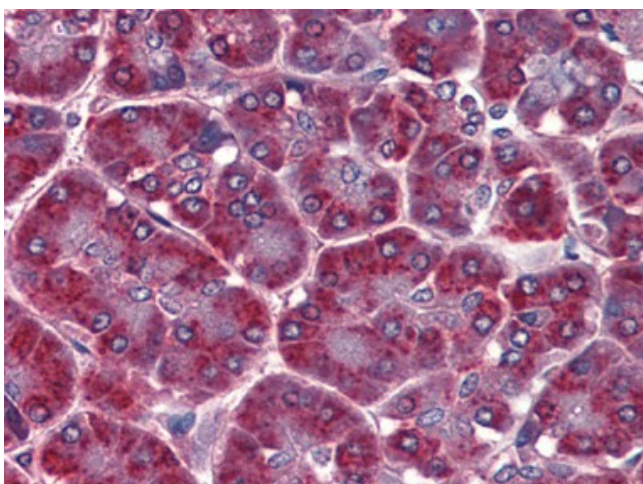


[View online »](#)

## Product images:



Western blot analysis of Aldh3A1 in human stomach lysate with Aldh3A1 antibody (AP22952PU-N) at (A) 1 and (B) 2 ug/ml.



Human Pancreas: Formalin-Fixed, Paraffin-Embedded (FFPE)