

Product datasheet for **AP22949PU-N**

EVER2 (TMC8) Rabbit Polyclonal Antibody

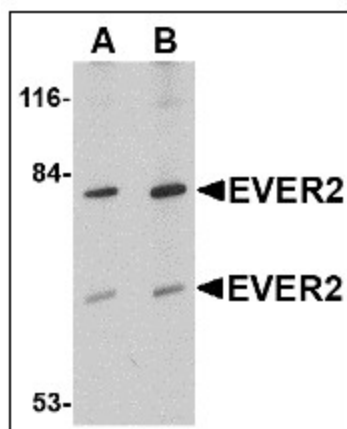
Product data:

Product Type:	Primary Antibodies
Applications:	IHC, WB
Recommended Dilution:	Immunohistochemistry on Paraffin Sections: 5 µg/ml. Western Blot: 1 - 2 µg/ml.
Reactivity:	Human, Mouse, Rat
Host:	Rabbit
Clonality:	Polyclonal
Immunogen:	TMC8 antibody was raised against 14 amino acid peptide from near the center of human EVER2
Specificity:	This antibody reacts to Transmembrane Channel-Like 8 (TMC8).
Formulation:	PBS containing 0.02% sodium azide. State: Purified State: Liquid purified Ig fraction
Concentration:	lot specific
Purification:	Immunoaffinity Chromatography
Conjugation:	Unconjugated
Storage:	Store the antibody undiluted at 2-8°C for one month or (in aliquots) at -20°C for longer. Avoid repeated freezing and thawing.
Stability:	Shelf life: one year from despatch.
Gene Name:	transmembrane channel like 8
Database Link:	Entrez Gene 217356 Mouse Entrez Gene 688276 Rat Entrez Gene 147138 Human Q8IU68
Synonyms:	Transmembrane channel-like protein 8, EVER2, EVIN2
Protein Families:	Transmembrane

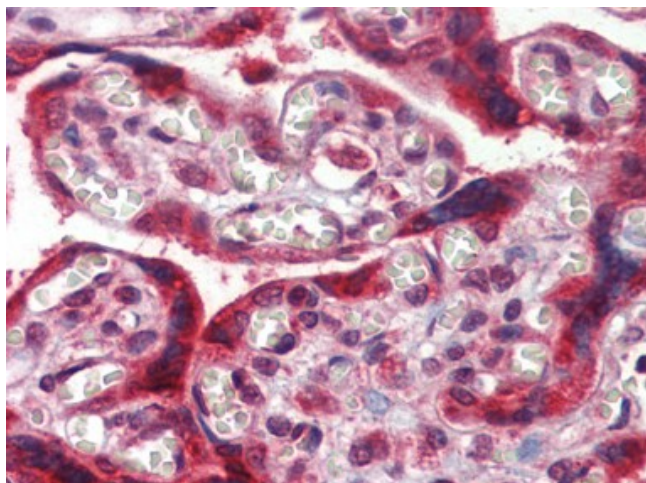


[View online »](#)

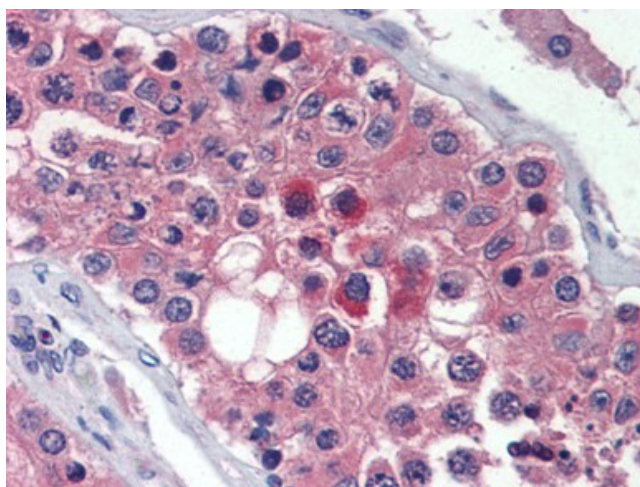
Product images:



Western blot analysis of EVER2 in Jurkat cell lysate with EVER2 antibody (AP22949PU-N) at (A) 1 and (B) 2 ug/ml.



Human Placenta: Formalin-Fixed, Paraffin-Embedded (FFPE)



Human Testis: Formalin-Fixed, Paraffin-Embedded (FFPE)