

Product datasheet for **AP22946PU-N**

STEAP1 Rabbit Polyclonal Antibody

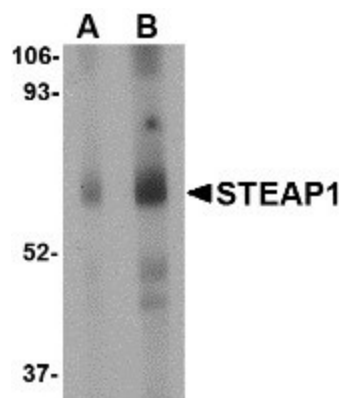
Product data:

Product Type:	Primary Antibodies
Applications:	IHC, WB
Recommended Dilution:	Immunohistochemistry on Paraffin Sections: 5 µg/ml. Western Blot: 2 µg/ml.
Reactivity:	Human, Mouse, Rat
Host:	Rabbit
Clonality:	Polyclonal
Immunogen:	Spred1 antibody was raised against a 14 amino acid peptide near the center of the human Spred1.
Specificity:	This antibody reacts to Six Transmembrane Epithelial Antigen Of The Prostate (STEAP) (STEAP1).
Formulation:	PBS containing 0.02% sodium azide. State: Purified State: Liquid purified Ig fraction
Concentration:	lot specific
Purification:	Immunoaffinity Chromatography
Conjugation:	Unconjugated
Storage:	Store (in aliquots) at -20°C to -70°C. Avoid repeated freezing and thawing.
Stability:	Shelf life: one year from despatch.
Gene Name:	six transmembrane epithelial antigen of the prostate 1
Database Link:	Entrez Gene 70358 Mouse Entrez Gene 297738 Rat Entrez Gene 26872 Human Q9UHE8
Synonyms:	STEAP-1, Metalloreductase STEAP1, PRSS24
Protein Families:	Transmembrane

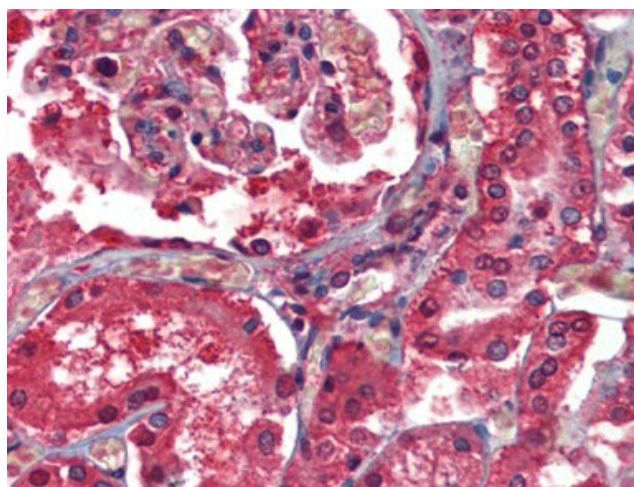


[View online »](#)

Product images:



Western blot analysis in human spleen tissue lysate with STEAP1 antibody (AP22946PU-N) at (A) 1 and (B) 2 ug/ml.



Human Kidney: Formalin-Fixed, Paraffin-Embedded (FFPE)