

Product datasheet for **AP22937PU-N**

Caspase 4 (CASP4) (N-term) Rabbit Polyclonal Antibody

Product data:

Product Type:	Primary Antibodies
Applications:	IHC, WB
Recommended Dilution:	Immunohistochemistry on Paraffin Sections: 5 µg/ml. Western Blot: 1 µg/ml.
Reactivity:	Human, Mouse
Host:	Rabbit
Clonality:	Polyclonal
Immunogen:	16 amino acid peptide from the amino-terminus of Human Caspase-4. Epitope: N-Terminus.
Specificity:	This antibody recognizes 16 amino acid peptide from the amino-terminus of Human Caspase-4
Formulation:	PBS State: Purified State: Liquid purified Ig fraction Preservative: 0.02% Sodium Azide
Concentration:	lot specific
Purification:	Immunoaffinity Chromatography
Conjugation:	Unconjugated
Storage:	Store undiluted at 2-8°C for one month or (in aliquots) at -20°C to -70°C for longer. Avoid repeated freezing and thawing.
Stability:	Shelf life: one year from despatch.
Gene Name:	caspase 4
Database Link:	Entrez Gene 12363 Mouse Entrez Gene 837 Human P49662



[View online »](#)

Background:

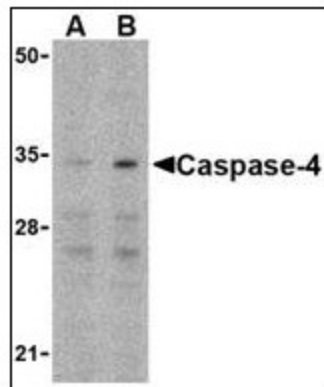
Caspases are a family of cysteine proteases that can be divided into the apoptotic and inflammatory caspase subfamilies. Unlike the apoptotic caspases, members of the inflammatory subfamily are generally not involved in cell death but are associated with the immune response to microbial pathogens. Members of this subfamily include caspase-1, -4, -5, and -12. Activation of these caspases results in the cleavage and activation of proinflammatory cytokines such as IL-1b and IL-18. Caspase-4 was initially identified as a homologous protein to Caspase-1 and the *C. elegans* Ced-3 which could induce apoptosis in transfected cells. More recent studies have shown that it can be activated by ER stress and has been suggested to be involved in multiple neuronal pathologies such as Alzheimer's disease. The rodent homolog is known as Caspase 4 and Caspase 11.

Synonyms:

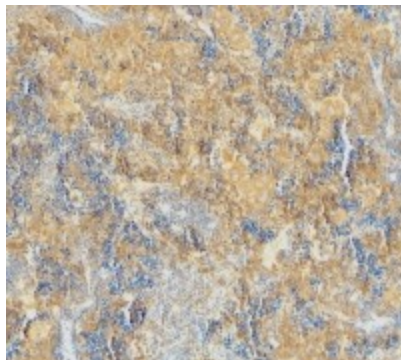
CASP4, ICH2, ICE(rel)-II, Protease ICH-2, Protease TX

Protein Families:

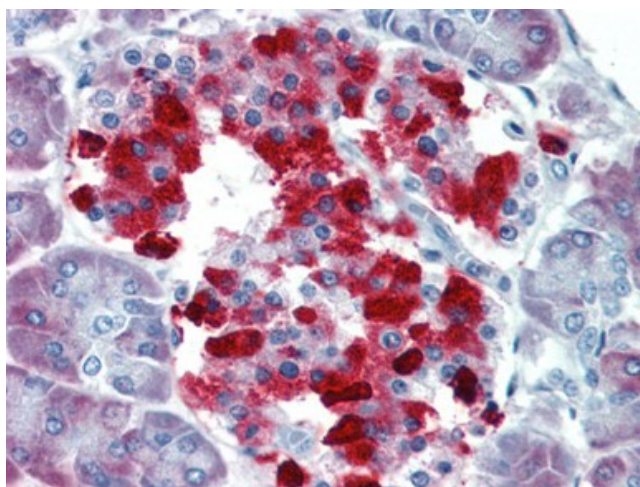
Druggable Genome, Protease

Product images:

Western blot analysis of caspase-4 in Ramos cells with caspase-4 antibody at (A) 0.5 and (B) 1 ug/ml.



Immunohistochemical staining of mouse spleen using Caspase-4 antibody at 2 ug/ml.



Formalin-Fixed, Paraffin-Embedded Human Pancreas stained with Caspase-4 antibody at 5 ug/ml after heat-induced antigen retrieval.