

Product datasheet for **AP22934AF-N**

Collagen VI (COL6A1) Goat Polyclonal Antibody

Product data:

Product Type:	Primary Antibodies
Applications:	ELISA, IF, IHC
Recommended Dilution:	DB. ELISA. Immunocytochemistry: 1/10 - 1/20. Immunohistochemistry on Frozen Sections. Immunohistochemistry on Paraffin Sections: 10 µg/ml.
Reactivity:	Human
Host:	Goat
Clonality:	Polyclonal
Immunogen:	Collagen VI antibody was raised against Human type VI Collagen.
Specificity:	Reacts with conformational determinants on Bovine and Human type VI Collagen as demonstrated by ELISA. May react with type VI collagen from other species. Exhibits < 10% cross-reactivity with Collagen type I, II, III, IV and V. Has not been tested for reactivity with other ECM proteins (e.g., Laminin, Fibronectin).
Formulation:	100 mM borate buffered saline, pH 8.0. No preservatives or amine-containing buffer salts added. State: Azide Free State: Liquid purified Ig fraction
Concentration:	lot specific
Purification:	Immunoaffinity Chromatography
Conjugation:	Unconjugated
Storage:	Store undiluted at 2-8°C for one month or (in aliquots) at -20°C for longer. Avoid repeated freezing and thawing.
Stability:	Shelf life: one year from despatch.
Gene Name:	collagen type VI alpha 1
Database Link:	Entrez Gene 1291 Human P12109



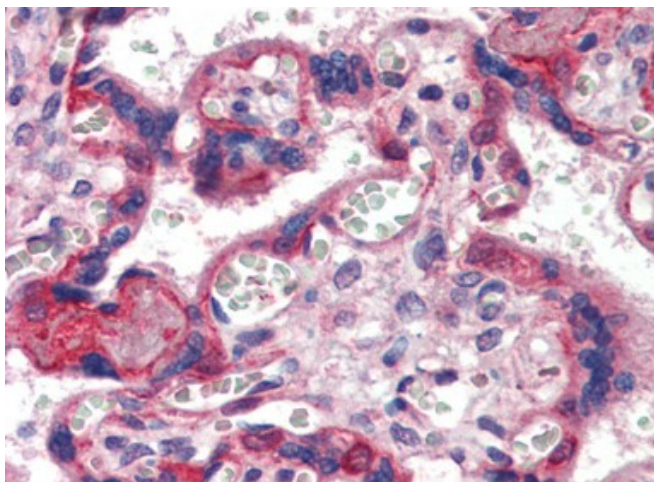
[View online »](#)

Background: Collagen VI is a form of collagen primarily associated with the extracellular matrix of skeletal muscle. It is associated with the genes COL6A1, COL6A2, COL6A3 and COL6A5. Defects are associated with Bethlem myopathy and Ullrich congenital muscular dystrophy.

Synonyms: COL6A1

Protein Pathways: ECM-receptor interaction, Focal adhesion

Product images:



IHC Image for AP22934AF-N Placenta, Human:
Formalin-Fixed, Paraffin-Embedded (FFPE)