

## Product datasheet for **AP22933PU-N**

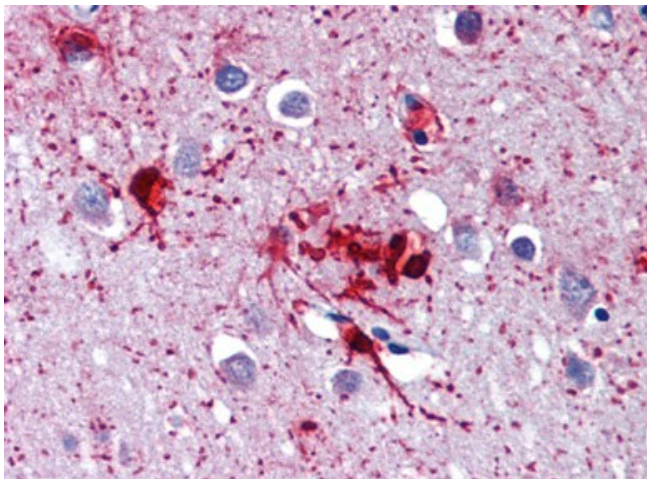
### DDX58 Goat Polyclonal Antibody

#### Product data:

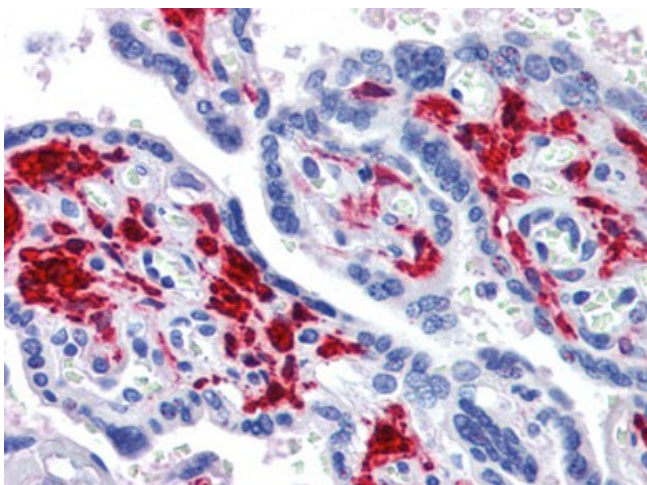
Product Type:	Primary Antibodies
Applications:	IHC
Recommended Dilution:	<b>Immunohistochemistry on Paraffin Sections:</b> 3.75 µg/ml.
Reactivity:	Human
Host:	Goat
Clonality:	Polyclonal
Immunogen:	Synthetic peptide from human DDX58 / RIG-1 / RIG-I
Specificity:	This antibody reacts to RNA Helicase (RIG-I) (DDX58).
Formulation:	Tris saline, 0.02% Sodium Azide, pH 7.3, 0.5% BSA State: Aff - Purified State: Liquid purified Ig fraction
Concentration:	lot specific
Purification:	Immunoaffinity purified
Conjugation:	Unconjugated
Storage:	Store the antibody undiluted at 2-8°C for one month or (in aliquots) at -20°C for longer. Avoid repeated freezing and thawing.
Stability:	Shelf life: one year from despatch.
Gene Name:	DEXD/H-box helicase 58
Database Link:	<a href="#">Entrez Gene 23586 Human O95786</a>
Background:	EAD box proteins, characterized by the conserved motif Asp-Glu-Ala-Asp (DEAD), are putative RNA helicases which are implicated in a number of cellular processes involving RNA binding and alteration of RNA secondary structure. This gene encodes a protein containing RNA helicase-DEAD box protein motifs and a caspase recruitment domain (CARD). It is involved in viral double-stranded (ds) RNA recognition and the regulation of immune response.
Synonyms:	RIG-1, RIG-I, DKFZp434J1111, DKFZp686N19181, FLJ13599, DEAD box protein 58
Protein Pathways:	Cytosolic DNA-sensing pathway, RIG-I-like receptor signaling pathway



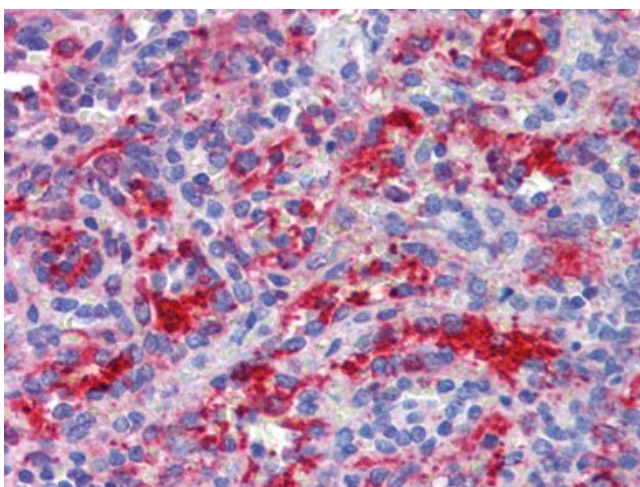
[View online »](#)

**Product images:**

Brain, cortex, Human: Formalin-Fixed, Paraffin-Embedded (FFPE)



Placenta, Human: Formalin-Fixed, Paraffin-Embedded (FFPE)



Spleen, Human: Formalin-Fixed, Paraffin-Embedded (FFPE)