

Product datasheet for **AP22917PU-N**

BACE2 (44-59) Rabbit Polyclonal Antibody

Product data:

Product Type:	Primary Antibodies
Applications:	ELISA, IHC, WB
Recommended Dilution:	ELISA. Immunohistochemistry on Paraffin Sections: 5 µg/ml. Western Blot: 0.5 - 1 µg/ml.
Reactivity:	Human, Mouse, Rat
Host:	Rabbit
Clonality:	Polyclonal
Immunogen:	BACE2 antibody was raised against synthetic peptide (aptpgpgtpaerhadg) corresponding to amino acids 44 to 59 of human BACE2
Specificity:	This antibody reacts to Beta-site APP-cleaving Enzyme 2 (BACE2).
Formulation:	PBS containing 0.02% sodium azide as preservative State: Purified State: Liquid purified Ig fraction
Concentration:	lot specific
Purification:	Immunoaffinity Chromatography
Conjugation:	Unconjugated
Storage:	Store the antibody undiluted at 2-8°C for one month or (in aliquots) at -20°C to -70°C for longer. Avoid repeated freezing and thawing.
Stability:	Shelf life: one year from despatch.
Gene Name:	beta-site APP-cleaving enzyme 2
Database Link:	Entrez Gene 56175 Mouse Entrez Gene 288227 Rat Entrez Gene 25825 Human Q9Y5Z0



[View online »](#)

Background:

Accumulation of the amyloid-beta (alpha-beta) plaque in the cerebral cortex is a critical event in the pathogenesis of Alzheimer's disease. alpha-beta peptide is generated by proteolytic cleavage of the beta-amyloid protein precursor (APP) at beta- and gamma-sites by proteases. The long-sought beta-secretase was recently identified by several groups independently and designated beta-site APP cleaving enzyme (BACE) and aspartyl protease 2 (Asp2) (1-4). A BACE homolog was recently cloned and designated BACE2, Asp1, DRAP (for Down region aspartic protease), and memapsin 1 (4-9). BACE2 also cleaves APP at beta-site and at a different site within $\alpha\beta$ (8). BACE2 locates on chromosome 21q22.3, the so-called 'Down critical region', suggesting that BACE2 and alpha beta may also contribute to the pathogenesis of Down syndrome (6,7).

Synonyms:

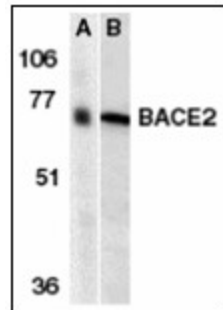
Beta-secretase 2, AEPLC, ALP56, ASP21, Memapsin-1, Aspartic-like protease 56 kDa, Down region aspartic protease, ASP1

Protein Families:

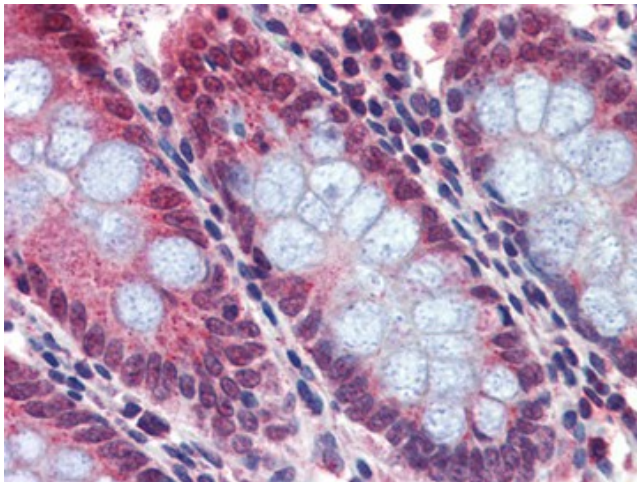
Druggable Genome, Protease, Transmembrane

Protein Pathways:

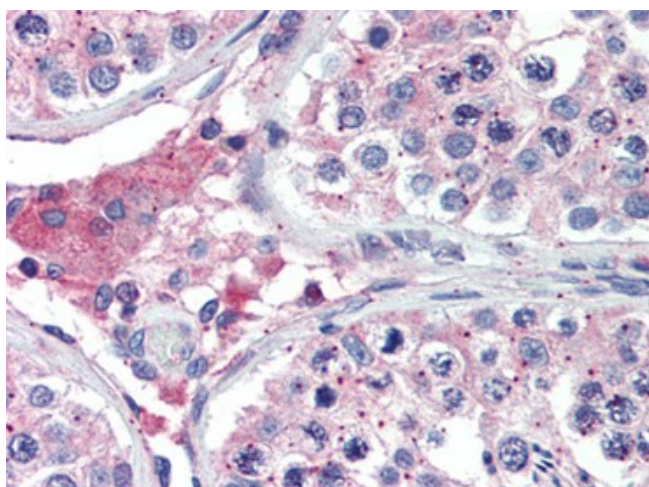
Alzheimer's disease

Product images:


Western blot analysis of BACE2 in human (A) and mouse (B) heart tissue lysates with BACE2 antibody at 1 ug/ml.



Human Colon: Formalin-Fixed, Paraffin-Embedded (FFPE)



Human Testis: Formalin-Fixed, Paraffin-Embedded (FFPE)