

Product datasheet for **AP22914PU-N**

Caspase 9 (CASP9) (299-318) Rabbit Polyclonal Antibody

Product data:

Product Type:	Primary Antibodies
Applications:	ELISA, IF, IHC, WB
Recommended Dilution:	ELISA. Immunocytochemistry. Immunohistochemistry on Paraffin Sections: 5 µg/ml. Western Blot: 1/1000 - 1/2000.
Reactivity:	Human
Host:	Rabbit
Clonality:	Polyclonal
Immunogen:	Akirin1 antibody was raised against peptide corresponding to aa 299-318 of the human Caspase 9.
Specificity:	This antibody reacts to Caspase 9 (CASP9).
Formulation:	PBS containing 0.02% sodium azide. State: Purified State: Liquid purified Ig fraction
Concentration:	lot specific
Purification:	Immunoaffinity Chromatography
Conjugation:	Unconjugated
Storage:	Store undiluted at 2-8°C for one month or (in aliquots) at -20°C for longer. Avoid repeated freezing and thawing.
Stability:	Shelf life: one year from despatch.
Gene Name:	caspase 9
Database Link:	Entrez Gene 842 Human P55211



[View online »](#)

Background:

Caspase 9 is a cysteine C14 endopeptidase that mediates oncogene and drug-induced apoptosis. It is activated upon binding to Apaf-1/cytochrome c and inhibited upon phosphorylation by the serine/ threonine kinase Akt. Activated caspase-9 cleaves downstream caspases such as Caspase-3, -6 and -7 initiating the caspase cascade. Like other caspases, Caspase-9 plays a critical role in mediating apoptosis during normal brain development. Caspase-9 also cleaves amyloid beta-protein precursors, principal constituent of senile plaques, and is involved in neuronal death observed in Alzheimer disease.

Synonyms:

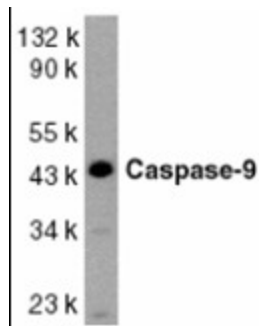
CASP-9, CASP9, MCH6, ICE-LAP6, APAF-3, APAF3

Protein Families:

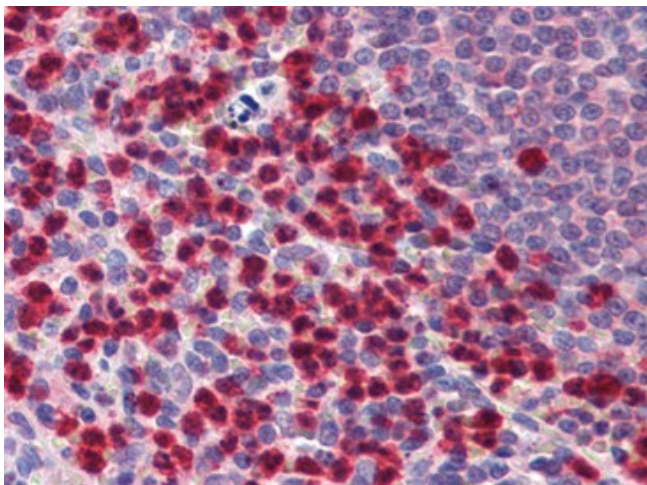
Druggable Genome, Protease, Stem cell - Pluripotency

Protein Pathways:

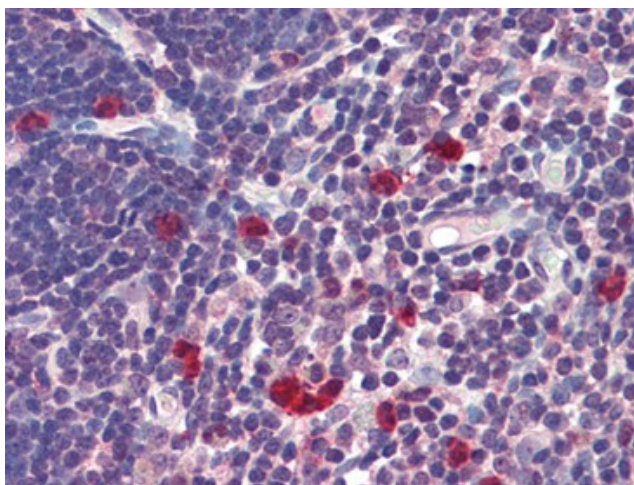
Alzheimer's disease, Amyotrophic lateral sclerosis (ALS), Apoptosis, Colorectal cancer, Endometrial cancer, Huntington's disease, Non-small cell lung cancer, p53 signaling pathway, Pancreatic cancer, Parkinson's disease, Pathways in cancer, Prostate cancer, Small cell lung cancer, VEGF signaling pathway, Viral myocarditis

Product images:


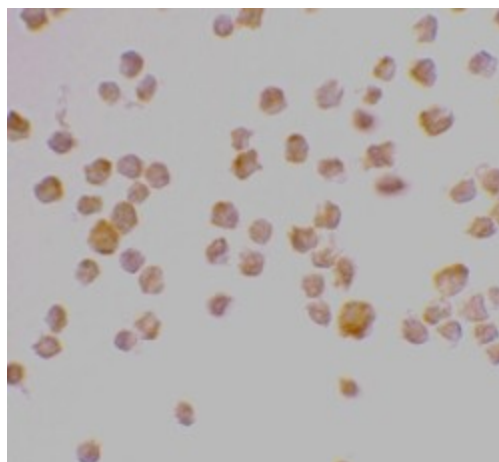
Western blot analysis of caspase-9 in HeLa whole cell lysate with Caspase-9 antibody at 1/1000 dilution.



Human Spleen: Formalin-Fixed, Paraffin-Embedded (FFPE)



Human Thymus: Formalin-Fixed, Paraffin-Embedded (FFPE)



Immunocytochemical staining of K562 cells using Caspase-9 antibody at 2 ug/ml.