

Product datasheet for **AP22909PU-N**

NTAL (LAT2) (91-243) Rabbit Polyclonal Antibody

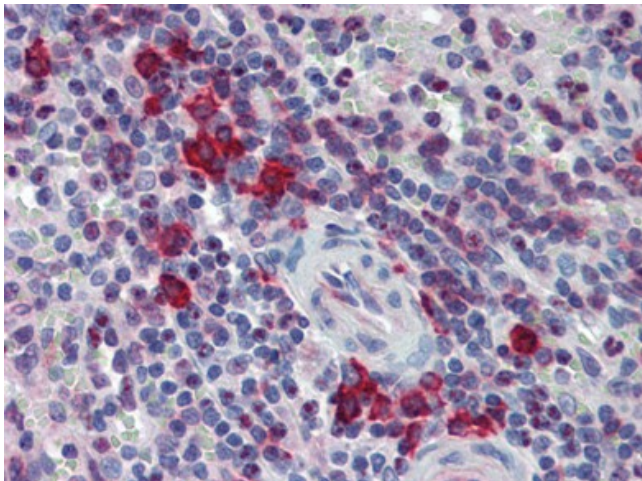
Product data:

Product Type:	Primary Antibodies
Applications:	IHC, WB
Recommended Dilution:	Immunohistochemistry on Paraffin Sections: 10 µg/ml. Inhb. Western Blot: 1 µg/ml.
Reactivity:	Human
Host:	Rabbit
Clonality:	Polyclonal
Immunogen:	LAT2 antibody was raised against recombinant cytoplasmic domain (aa 91-243) of human NTAL
Specificity:	This antibody reacts to Linker For Activation Of T Cells Family, Member 2 (LAT2).
Formulation:	PBS, pH 7.4. containing 15 mM sodium azide State: Purified State: Liquid purified Ig fraction
Purification:	Protein A Chromatography
Conjugation:	Unconjugated
Storage:	Store the antibody undiluted at 2-8°C for one month or (in aliquots) at -20°C for longer. Avoid repeated freezing and thawing.
Stability:	Shelf life: one year from despatch.
Gene Name:	linker for activation of T-cells family member 2
Database Link:	Entrez Gene 7462 Human Q9GZY6
Synonyms:	LAB, NTAL, WBS15, WBSR5, HSPC046
Protein Families:	Transmembrane



[View online »](#)

Product images:



Spleen, Human: Formalin-Fixed, Paraffin-Embedded (FFPE)