

Product datasheet for **AP22908SU-N**

SLP76 (LCP2) (216-434) Rabbit Polyclonal Antibody

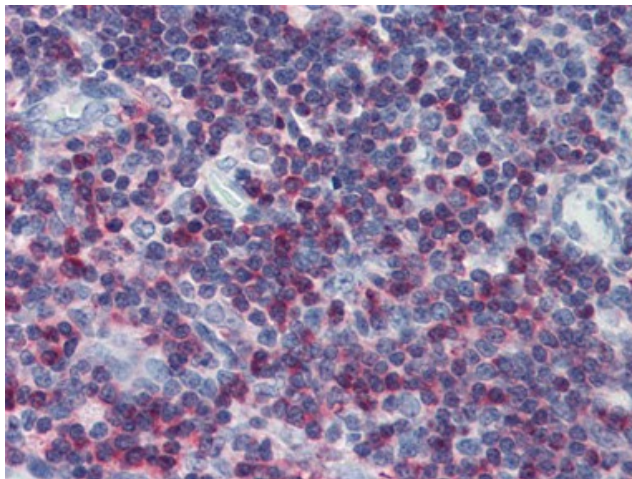
Product data:

Product Type:	Primary Antibodies
Applications:	IHC, WB
Recommended Dilution:	Immunohistochemistry on Paraffin Sections: 10 µg/ml. Inhb. Western Blot.
Reactivity:	Human
Host:	Rabbit
Clonality:	Polyclonal
Immunogen:	LCP2 antibody was raised against bacterially expressed fusion protein representing amino acids 216-434 of human SLP76 with histidine tag.
Specificity:	This antibody reacts to 76 Kda Tyrosine Phosphoprotein Slp-76 (LCP2).
Formulation:	PBS, pH 7.4 containing 15 mM sodium azide State: Serum State: Liquid serum
Concentration:	lot specific
Conjugation:	Unconjugated
Storage:	Store the antibody undiluted at 2-8°C for one month or (in aliquots) at -20°C for longer. Avoid repeated freezing and thawing.
Stability:	Shelf life: one year from despatch.
Gene Name:	lymphocyte cytosolic protein 2
Database Link:	Entrez Gene 3937 Human Q13094
Synonyms:	LCP2, Lymphocyte cytosolic protein 2, SLP-76 tyrosine phosphoprotein, SLP76
Protein Pathways:	Fc epsilon RI signaling pathway, Natural killer cell mediated cytotoxicity, T cell receptor signaling pathway



[View online »](#)

Product images:



Thymus: Formalin-Fixed, Paraffin-Embedded (FFPE)