

Product datasheet for **AP22899PU-N**

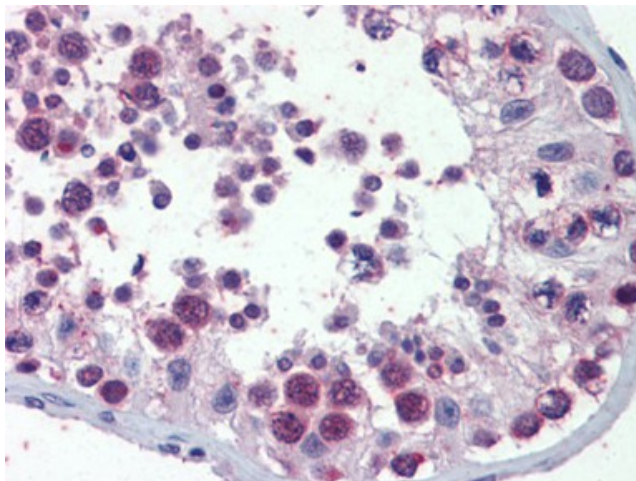
PILRB Goat Polyclonal Antibody

Product data:

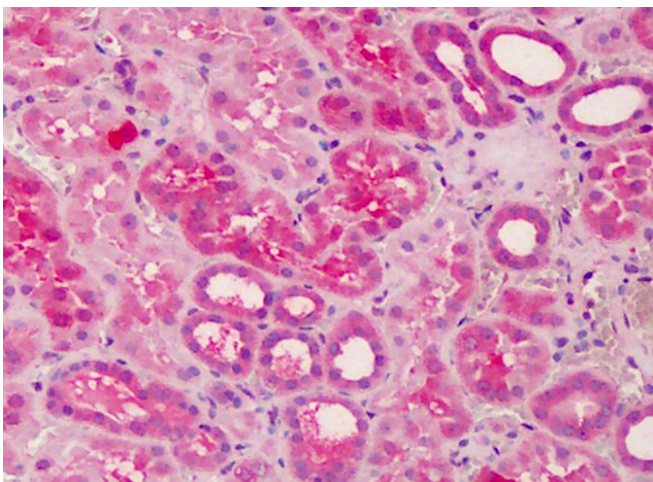
Product Type:	Primary Antibodies
Applications:	ELISA, IHC
Recommended Dilution:	ELISA. Immunohistochemistry on Paraffin Sections: 3 - 6 µg/ml.
Reactivity:	Human
Host:	Goat
Clonality:	Polyclonal
Immunogen:	PILRB antibody was raised against Synthetic peptide
Specificity:	This antibody reacts to Paired Immunoglobulin-like Receptor Beta (pilr(beta)) (PILRB).
Formulation:	Tris saline buffer, pH 7.3 containing 0.5% BSA as stabilizer and 0.02% sodium azide as preservative State: Purified State: Liquid purified Ig fraction
Concentration:	lot specific
Purification:	Immunoaffinity Chromatography
Conjugation:	Unconjugated
Storage:	Store the antibody undiluted at 2-8°C for one month or (in aliquots) at -20°C for longer. Avoid repeated freezing and thawing.
Stability:	Shelf life: one year from despatch.
Gene Name:	paired immunoglobulin-like type 2 receptor beta
Database Link:	Entrez Gene 29990 Human Q9UKJ0
Synonyms:	PILR-beta, FDFACT, PP1551
Protein Families:	Druggable Genome, Transmembrane



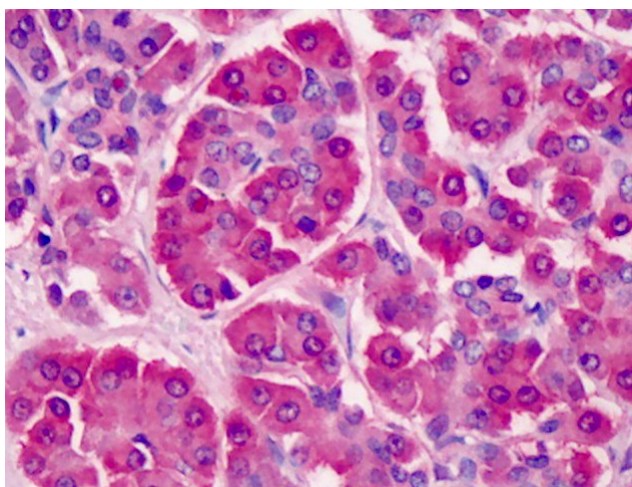
[View online »](#)

Product images:

Human Testis (formalin-fixed, paraffin-embedded) stained with PILRB antibody followed by biotinylated secondary antibody, alkaline phosphatase-streptavidin and chromogen.



Human Kidney: Formalin-Fixed, Paraffin-Embedded (FFPE)



Human Pancreas: Formalin-Fixed, Paraffin-Embedded (FFPE)