

Product datasheet for **AP22895PU-N**

Calnexin (CANX) Rabbit Polyclonal Antibody

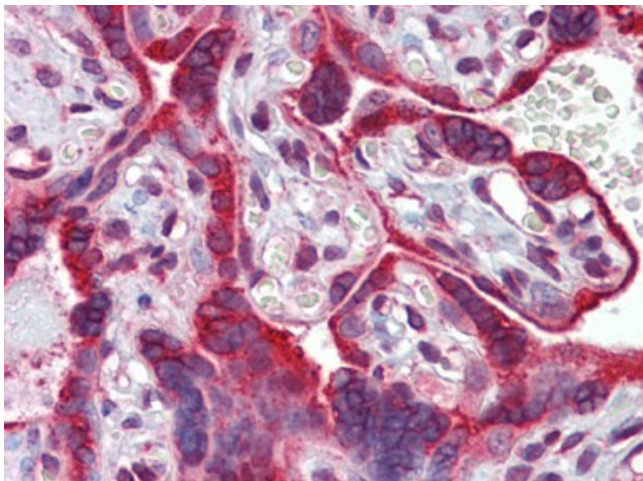
Product data:

| | |
|-----------------------|--|
| Product Type: | Primary Antibodies |
| Applications: | IHC, WB |
| Recommended Dilution: | Immunohistochemistry on Paraffin Sections: 5 - 10 µg/ml. Western Blot: 1/1000. |
| Reactivity: | Canine, Bovine, Guinea Pig, Hamster, Human, Monkey, Mouse, Porcine, Rabbit, Rat, Sheep, Xenopus |
| Host: | Rabbit |
| Clonality: | Polyclonal |
| Immunogen: | CANX antibody was raised against synthetic peptide derived from sequence near the amino-terminus of canine Calnexin, conjugated to KLH |
| Specificity: | This antibody reacts to Calnexin (CANX). |
| Formulation: | PBS, pH 7.2 containing 0.09% azide and 50% glycerol State: Purified State: Liquid purified Ig fraction |
| Concentration: | lot specific |
| Purification: | Protein A Chromatography |
| Conjugation: | Unconjugated |
| Storage: | Store the antibody at -20°C. Avoid repeated freezing and thawing. |
| Stability: | Shelf life: one year from despatch. |
| Gene Name: | calnexin |
| Database Link: | Entrez Gene 12330 Mouse Entrez Gene 29144 Rat Entrez Gene 704794 Monkey Entrez Gene 821 Human P27824 |
| Synonyms: | IP90, p90, CANX, ER Marker |
| Protein Families: | Druggable Genome, Transmembrane |
| Protein Pathways: | Antigen processing and presentation |

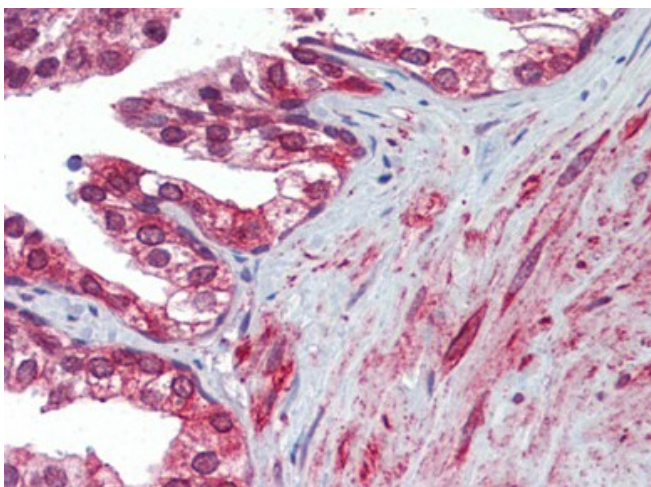


[View online »](#)

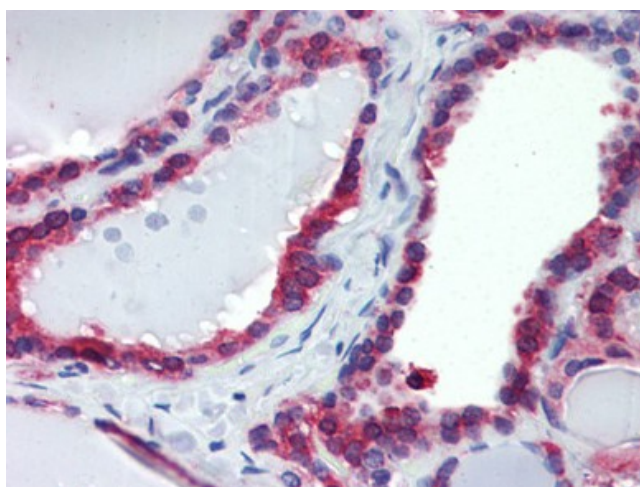
Product images:



Placenta, Human: Formalin-Fixed, Paraffin-Embedded (FFPE)



Prostate, Human: Formalin-Fixed, Paraffin-Embedded (FFPE)



Thyroid, Human: Formalin-Fixed, Paraffin-Embedded (FFPE)