

Product datasheet for **AP22893PU-N**

HSP90AB1 (250-325) Rabbit Polyclonal Antibody

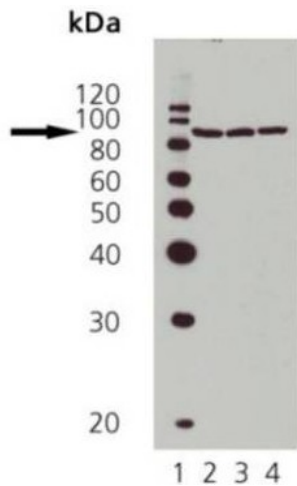
Product data:

Product Type:	Primary Antibodies
Applications:	IHC, WB
Recommended Dilution:	Immunohistochemistry on Paraffin Sections: 10 µg/ml. Western Blot: 1/1000.
Reactivity:	Canine, Human, Mouse, Rabbit, Rat
Host:	Rabbit
Clonality:	Polyclonal
Immunogen:	Synthetic peptide between aa 250-325 in the sequence of human Hsp90
Specificity:	This antibody reacts to Heat Shock Protein 90 (HSP90).
Formulation:	PBS, pH 7.2 containing 0.09% azide State: Purified State: Liquid purified Ig fraction
Concentration:	lot specific
Purification:	Protein A chromatography
Conjugation:	Unconjugated
Storage:	Store the antibody at -20°C. Avoid repeated freezing and thawing.
Stability:	Shelf life: one year from despatch.
Gene Name:	heat shock protein 90kDa alpha family class B member 1
Database Link:	Entrez Gene 15516 Mouse Entrez Gene 301252 Rat Entrez Gene 3326 Human P08238
Synonyms:	HSP90AB1, HSP90B, HSPC2, HSPCB, HSP84, HSP-90, HSP-84, Heat shock protein HSP 90-beta, HSP84, HSP-84, HSP90AA1, HSP90A, HSPC1, HSPCA, HSP86, HSP-86, Renal carcinoma antigen NY-REN-38, Heat shock protein HSP 90-alpha, HSP86, HSP-86
Protein Families:	Druggable Genome, Stem cell - Pluripotency
Protein Pathways:	Antigen processing and presentation, NOD-like receptor signaling pathway, Pathways in cancer, Progesterone-mediated oocyte maturation, Prostate cancer

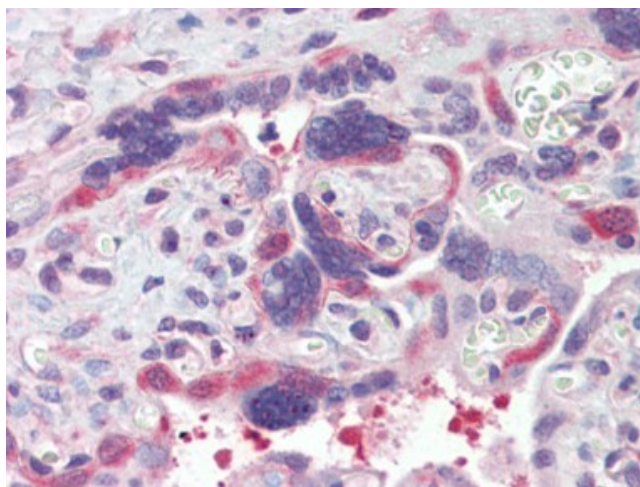


[View online »](#)

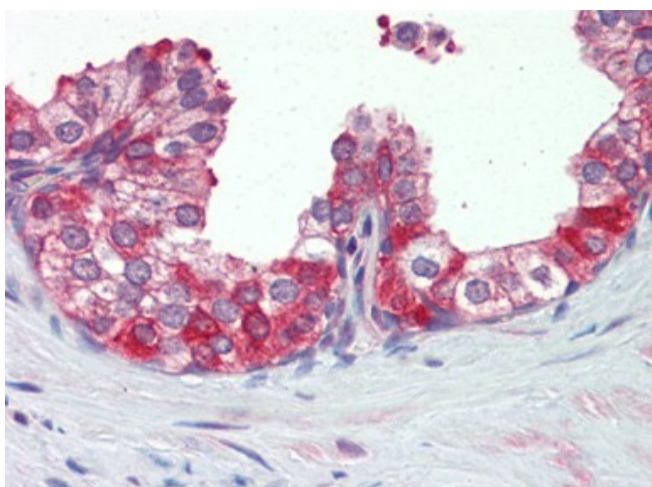
Product images:



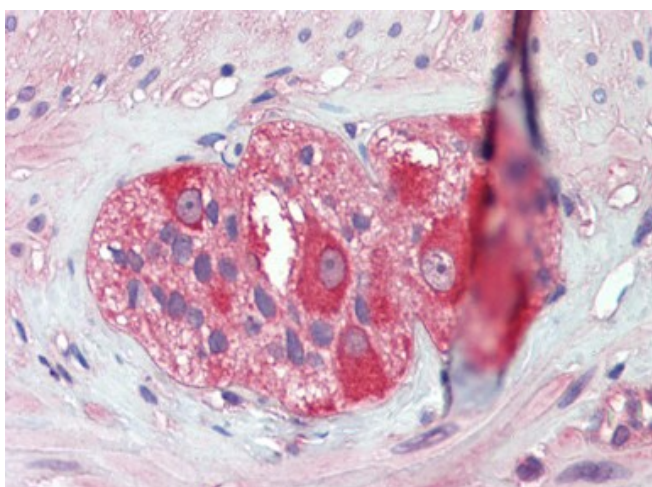
WB Image for AP22893PU-N Lane 1: MWM Lane 2: HeLa heat shocked Lane 3: L-929 heat shocked Lane 4: Rat-2 heat shocked



IHC Image for AP22893PU-N Placenta, Human: Formalin-Fixed, Paraffin-Embedded (FFPE)



IHC Image for AP22893PU-N Prostate, Human: Formalin-Fixed, Paraffin-Embedded (FFPE)



IHC Image for AP22893PU-N Small intestine, myenteric plexus, Human: Formalin-Fixed, Paraffin-Embedded (FFPE)