

Product datasheet for **AP22891PU-N**

ERp57 (PDIA3) Rabbit Polyclonal Antibody

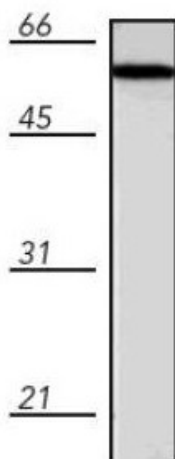
Product data:

| | |
|-----------------------|--|
| Product Type: | Primary Antibodies |
| Applications: | IHC, WB |
| Recommended Dilution: | Immunohistochemistry on Paraffin Sections: 10 µg/ml. Western Blot: 1/1000. |
| Reactivity: | Rat, Bovine, Canine, Guinea Pig, Hamster, Human, Monkey, Mouse, Porcine, Rabbit |
| Host: | Rabbit |
| Clonality: | Polyclonal |
| Immunogen: | PDIA3 antibody was raised against native rat liver Grp58 protein. |
| Specificity: | This antibody reacts to Probable Protein Disulfide Isomerase Er-60 (PDIA3). |
| Formulation: | PBS containing 0.09% azide and 50% glycerol State: Purified State: Liquid purified Ig fraction |
| Concentration: | lot specific |
| Purification: | Protein A Chromatography |
| Conjugation: | Unconjugated |
| Storage: | Store the antibody at -20°C. Avoid repeated freezing and thawing. |
| Stability: | Shelf life: one year from despatch. |
| Gene Name: | protein disulfide isomerase family A member 3 |
| Database Link: | Entrez Gene 14827 Mouse Entrez Gene 29468 Rat Entrez Gene 711029 Monkey Entrez Gene 2923 Human P30101 |
| Synonyms: | Protein disulfide-isomerase A3, ERP57, ERP60, GRP58, Protein Disulfide Isomerase, ER marker |
| Protein Families: | Druggable Genome |
| Protein Pathways: | Antigen processing and presentation |

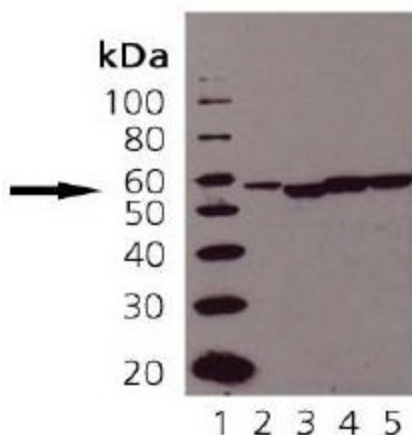


[View online »](#)

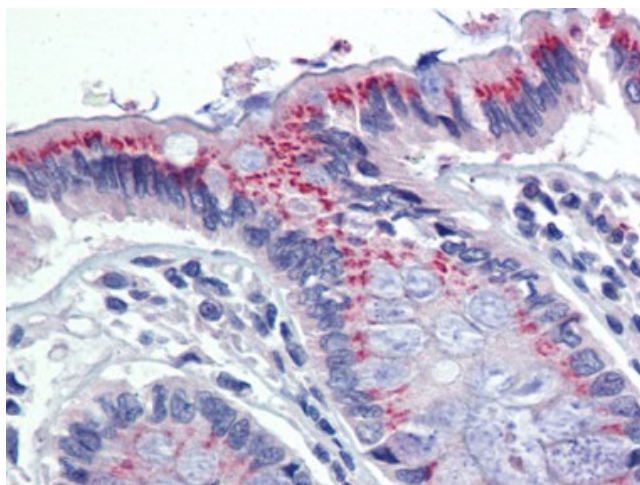
Product images:



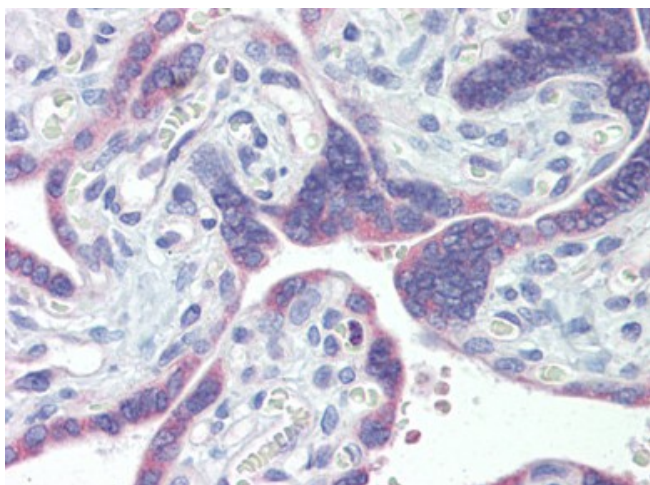
Western blot analysis of canine MDCK lysate.



Western Blot Analysis of ERp57 (Grp58): Lane 1: MWM Lane 2: CHO-K1 lysate Lane 3: Human Liver Microsomes Lane 4: Rat Liver Microsomes Lane 5: Mouse Liver Microsomes



Colon, Human: Formalin-Fixed, Paraffin-Embedded (FFPE)



Placenta, Human: Formalin-Fixed, Paraffin-Embedded (FFPE)