

Product datasheet for **AP22887PU-N**

GSK3 beta (GSK3B) Rabbit Polyclonal Antibody

Product data:

Product Type:	Primary Antibodies
Applications:	IF, IHC, WB
Recommended Dilution:	Immunofluorescence. Immunohistochemistry on Paraffin Sections: 10 µg/ml. Western Blot: 1/1000.
Reactivity:	Rat, Bovine, Human, Mouse
Host:	Rabbit
Clonality:	Polyclonal
Immunogen:	GSK3B antibody was raised against synthetic peptide
Specificity:	This antibody reacts to Glycogen Synthase Kinase 3, Beta (GSK3B).
Formulation:	PBS, pH 7.2 containing 50% glycerol and 0.09% azide State: Purified State: Liquid purified Ig fraction
Concentration:	lot specific
Purification:	Protein A Chromatography
Conjugation:	Unconjugated
Storage:	Store the antibody at -20°C. Avoid repeated freezing and thawing.
Stability:	Shelf life: one year from despatch.
Gene Name:	glycogen synthase kinase 3 beta
Database Link:	Entrez Gene 56637 Mouse Entrez Gene 84027 Rat Entrez Gene 2932 Human P49841
Background:	Glycogen Synthase Kinase 3 beta is a GSK-3 multisubstrate serine/threonine kinase that is associated with the canonical Wnt signaling pathway, which is involved in mammalian brain regionalization. Glycogen Synthase Kinase 3 beta has been implicated in Alzheimer's Disease, when improper phosphorylation of the microtubule-associated protein Tau results in the accumulation of neurofibrillary tangles. Two alternatively spliced isoforms have been observed.



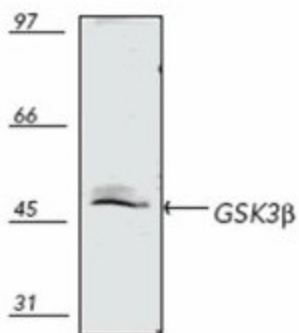
[View online »](#)

Synonyms: GSK-3 beta, Glycogen synthase kinase-3 beta, GSK3B

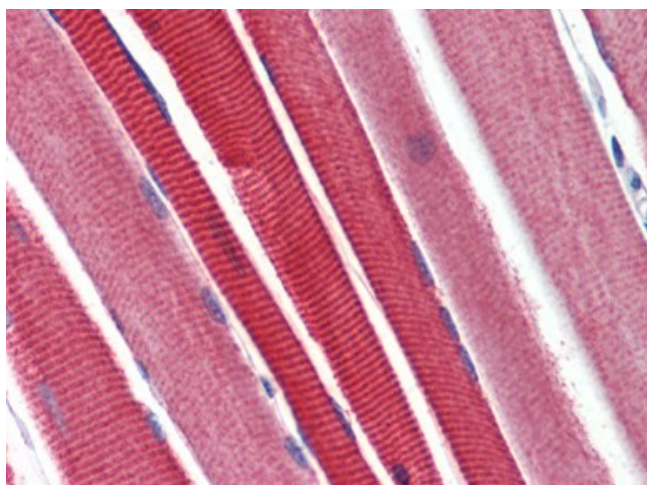
Protein Families: Druggable Genome, Protein Kinase

Protein Pathways: Alzheimer's disease, Axon guidance, Basal cell carcinoma, B cell receptor signaling pathway, Cell cycle, Chemokine signaling pathway, Colorectal cancer, Endometrial cancer, ErbB signaling pathway, Focal adhesion, Hedgehog signaling pathway, Insulin signaling pathway, Melanogenesis, Neurotrophin signaling pathway, Pathways in cancer, Prostate cancer, T cell receptor signaling pathway, Wnt signaling pathway

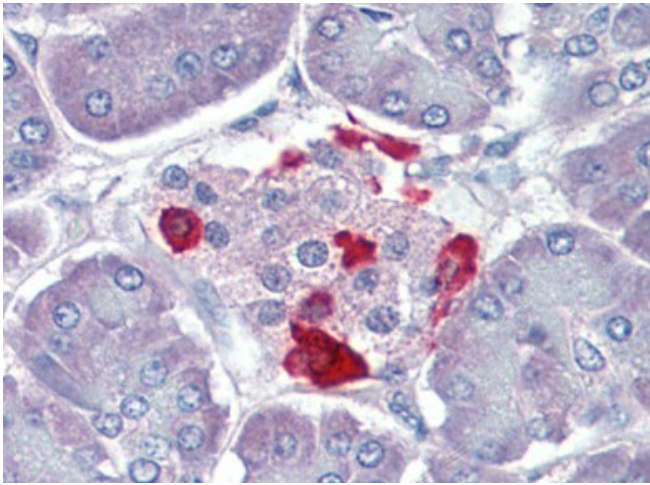
Product images:



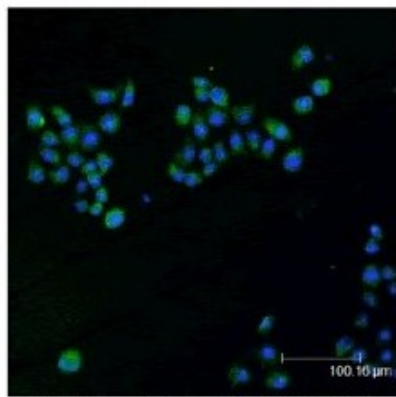
Western blot analysis of human HeLa (heat shocked) cell lysate, probed with GSK3 β polyclonal antibody (1H8)



Skeletal muscle, Human: Formalin-Fixed, Paraffin-Embedded (FFPE)



Pancreas, Human: Formalin-Fixed, Paraffin-Embedded (FFPE)



Confocal immunofluorescent staining of HeLa cells using GSK3 β polyclonal antibody (1H8) (green); nuclei are stained in blue pseudocolor using DRAQS