

Product datasheet for **AP22886PU-N**

PDK1 Rabbit Polyclonal Antibody

Product data:

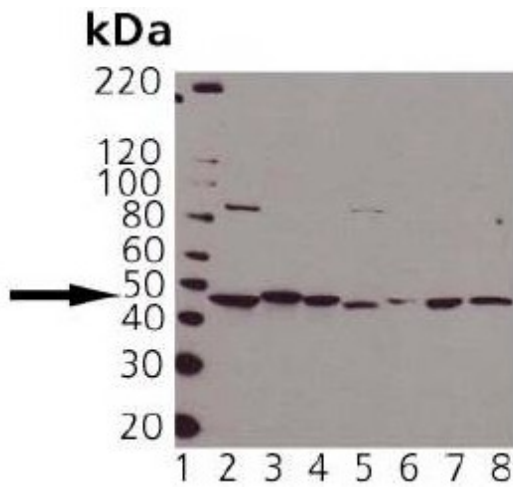
Product Type:	Primary Antibodies
Applications:	IHC, WB
Recommended Dilution:	Immunohistochemistry on Paraffin Sections: 10 µg/ml. Western Blot: 1/1000.
Reactivity:	Human, Canine, Monkey, Mouse, Porcine, Rabbit, Rat
Host:	Rabbit
Clonality:	Polyclonal
Immunogen:	Fusion protein containing amino acids 269-320 from human m1 AChR.
Specificity:	This antibody reacts to Pyruvate Dehydrogenase Kinase Isoenzyme 1 (PDK1).
Formulation:	PBS containing 0.09% azide and 50% glycerol State: Purified State: Liquid purified Ig fraction
Concentration:	lot specific
Purification:	Protein A Chromatography
Conjugation:	Unconjugated
Storage:	Store the antibody at -20°C. Avoid repeated freezing and thawing.
Stability:	Shelf life: one year from despatch.
Gene Name:	pyruvate dehydrogenase kinase 1
Database Link:	Entrez Gene 116551 Rat Entrez Gene 228026 Mouse Entrez Gene 5163 Human Q15118
Background:	PDK1 belongs to the PDK/BCKDK protein kinase subfamily. PDK1 contributes to the regulation of glucose metabolism by inhibiting the mitochondrial pyruvate dehydrogenase complex by phosphorylating the E1 alpha subunit.
Synonyms:	Pyruvate dehydrogenase kinase isoform 1
Protein Families:	Druggable Genome, Protein Kinase



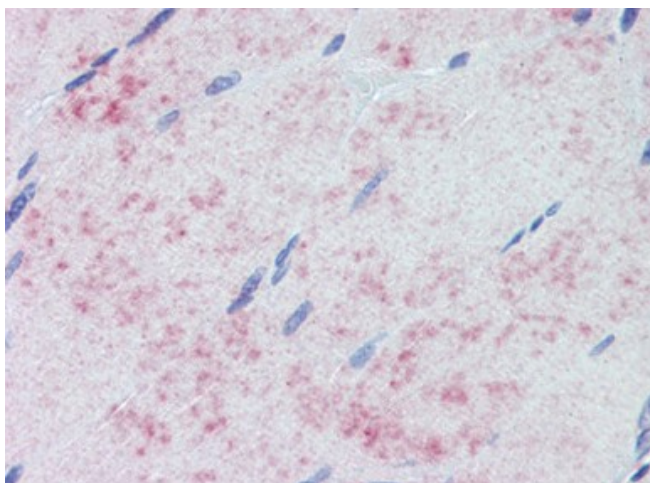
[View online »](#)

Protein Pathways: Fc epsilon RI signaling pathway, Neurotrophin signaling pathway, T cell receptor signaling pathway

Product images:



Western Blot Analysis of PDK1: Lane 1: MWM
Lane 2: HeLa Lane 3: Rat Brain Lane 4: Mouse Brain
Lane 5: Vero Lane 6: ESK-4 Lane 7: RK-13
Lane 8: MDCK



Skeletal muscle. Human: Formalin-Fixed, Paraffin-Embedded (FFPE)