

## Product datasheet for **AP22885PU-N**

### cGKI (PRKG1) Rabbit Polyclonal Antibody

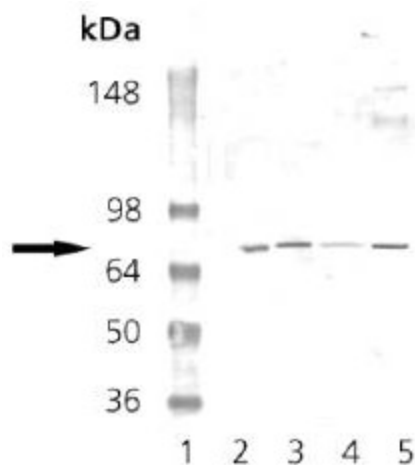
#### Product data:

Product Type:	Primary Antibodies
Applications:	IHC, WB
Recommended Dilution:	<b>Immunohistochemistry on Paraffin Sections:</b> 10 µg/ml. <b>Western Blot.</b>
Reactivity:	Human, Mouse, Porcine, Rat
Host:	Rabbit
Clonality:	Polyclonal
Immunogen:	Synthetic peptide - KLH conjugated
Specificity:	This antibody reacts to Cyclic GMP-Dependent Protein Kinase(PRKG).
Formulation:	PBS, pH 7.2 containing 0.09% azide, 50% glycerol State: Purified State: Liquid purified Ig fraction
Concentration:	lot specific
Purification:	Protein A chromatography
Conjugation:	Unconjugated
Storage:	Store the antibody at -20°C. Avoid repeated freezing and thawing.
Stability:	Shelf life: one year from despatch.
Gene Name:	protein kinase, cGMP-dependent, type I
Database Link:	<a href="#">Entrez Gene 19091 Mouse</a> <a href="#">Entrez Gene 54286 Rat</a> <a href="#">Entrez Gene 5592 Human Q13976</a>
Synonyms:	Cyclic GMP-Dependent Protein Kinase
Protein Families:	Druggable Genome, Protein Kinase
Protein Pathways:	Gap junction, Long-term depression, Olfactory transduction, Vascular smooth muscle contraction

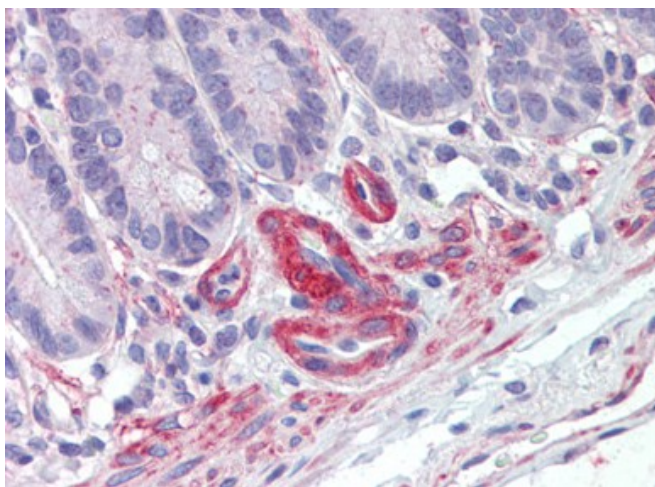


[View online »](#)

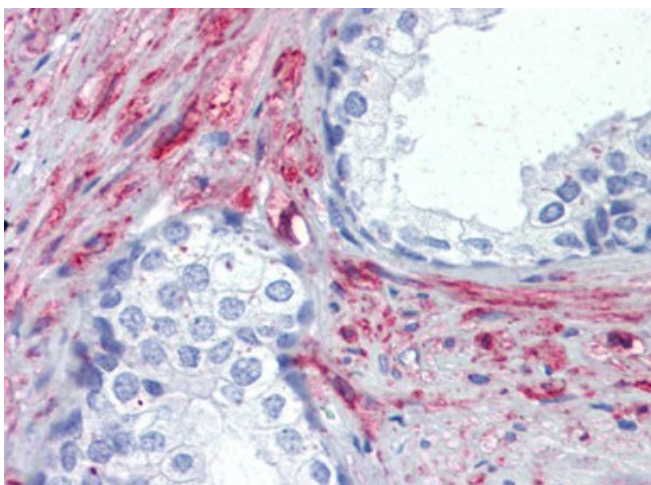
## Product images:



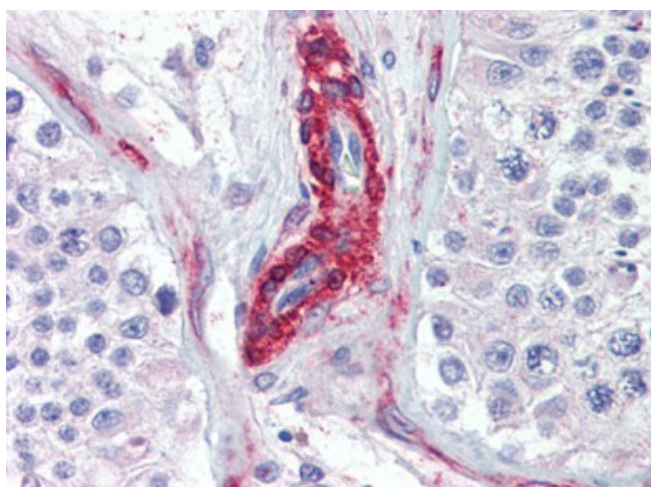
Western Blot Analysis for AP22885PU-N Lane 1: MWM Lane 2: Mouse Brain Tissue Extract Lane 3: Rat Brain Tissue Extract Lane 4: EKS4 Cell Lysate Lane 5: H S67 Cell Lysate probed with PKG polyclonal antibody.



IHC Image for AP22885PU-N Small intestine, Human: Formalin-Fixed, Paraffin-Embedded (FFPE)



IHC Image for AP22885PU-N Prostate, Human:  
Formalin-Fixed, Paraffin-Embedded (FFPE)



IHC Image for AP22885PU-N Testis, Human:  
Formalin-Fixed, Paraffin-Embedded (FFPE)