

Product datasheet for **AP22881PU-N**

RPS6KA3 (604-617) Rabbit Polyclonal Antibody

Product data:

Product Type:	Primary Antibodies
Applications:	IHC, IP, WB
Recommended Dilution:	Immunohistochemistry on Paraffin Sections: 20 µg/ml. Immunoprecipitation. Western Blot: 1 µg/ml.
Reactivity:	Mouse, Bovine, Bat, Canine, Chicken, Equine, Hamster, Human, Monkey, Porcine, Rabbit, Rat
Host:	Rabbit
Clonality:	Polyclonal
Immunogen:	Synthetic peptide based on the mouse RSK2 S6 kinase (amino acids 604-617) with the cysteine (C) residue added and the peptide coupled to KLH
Specificity:	Detects an ~90 kD protein, corresponding to the apparent molecular mass of RSK2 on SDS-PAGE immunoblots.
Formulation:	PBS, pH 7.2 containing 50% Glycerol and 0.09% Azide State: Purified State: Liquid purified Ig fraction
Concentration:	lot specific
Purification:	Protein A Chromatography
Conjugation:	Unconjugated
Storage:	Store undiluted at 2-8°C for one month or (in aliquots) at -20°C for longer. Avoid repeated freezing and thawing.
Stability:	Shelf life: one year from despatch.
Gene Name:	ribosomal protein S6 kinase A3
Database Link:	Entrez Gene 110651 Mouse Entrez Gene 501560 Rat Entrez Gene 6197 Human P51812
Background:	RSK2, an RSK serine/threonine kinase, has been implicated in Coffin-Lowry syndrome, a disease characterized by cognitive impairment, characteristic facial and digital findings and skeletal anomalies.
Synonyms:	RSK-2, ISPK1, ISPK-1, MAPKAPK1, MAPKAPK-1b, S6K-alpha-3, p90RSK3, Ribosomal S6 kinase 2

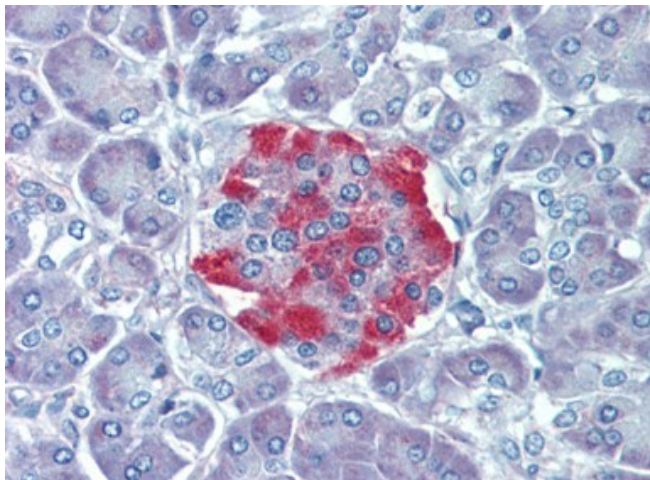


[View online »](#)

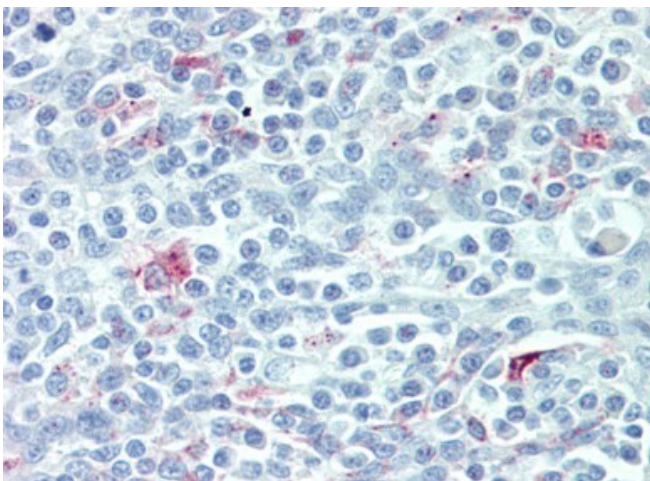
Protein Families: Druggable Genome, Protein Kinase

Protein Pathways: Long-term potentiation, MAPK signaling pathway, mTOR signaling pathway, Neurotrophin signaling pathway, Oocyte meiosis, Progesterone-mediated oocyte maturation

Product images:



Human Pancreas (formalin-fixed, paraffin-embedded) stained with RPS6KA3 antibody followed by biotinylated goat anti-rabbit IgG secondary antibody, alkaline phosphatase-streptavidin and chromogen.



Human Tonsil (formalin-fixed, paraffin-embedded) stained with RPS6KA3 antibody followed by biotinylated goat anti-rabbit IgG secondary antibody, alkaline phosphatase-streptavidin and chromogen.