

Product datasheet for **AP22875PU-N**

Neuropeptide Y (NPY) (31-36) Rabbit Polyclonal Antibody

Product data:

Product Type:	Primary Antibodies
Applications:	ELISA, IF, IHC
Recommended Dilution:	ELISA: 1/2000 - 1/10000. Immunofluorescence: 1/200 - 1/400. Immunohistochemistry on Frozen Sections. Immunohistochemistry on Paraffin Sections: 1/100.
Reactivity:	Porcine
Host:	Rabbit
Clonality:	Polyclonal
Immunogen:	Synthetic Porcine Neuropeptide Y coupled to bovine thyroglobulin via glutaraldehyde
Specificity:	Specific for neuropeptide Y and performs well in a sandwich ELISA with antibodies raised against amino acids 31-36.
Formulation:	PBS State: Purified State: Liquid IgG fraction Stabilizer: 1% BSA Preservative: 0.09% Sodium Azide
Purification:	Blue Sepharose Chromatography
Conjugation:	Unconjugated
Storage:	Store undiluted at 2-8°C for one month or (in aliquots) at -20°C for longer. Avoid repeated freezing and thawing.
Stability:	Shelf life: one year from despatch.
Gene Name:	neuropeptide Y
Database Link:	Entrez Gene 4852 Human P01303



[View online »](#)

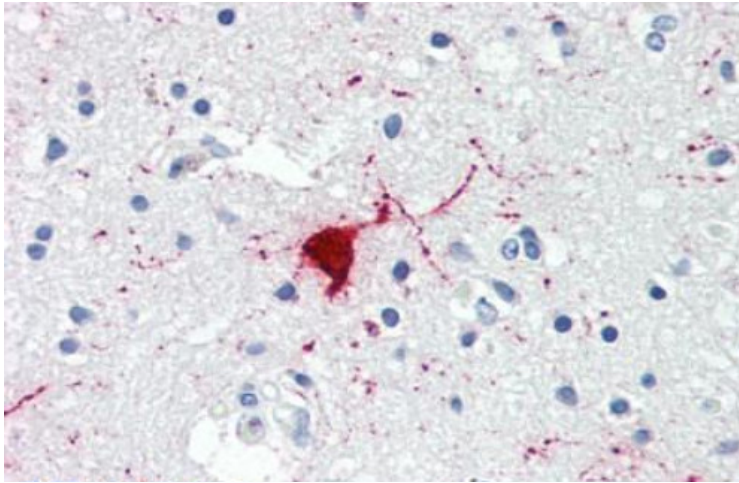
Background: Neuropeptide Y is a 36 amino acid neuropeptide found in the brain and autonomic nervous system that is known to function as a potent stimulator of feeding behavior. It is a member of a family of proteins that include pancreatic polypeptide, seminal plasmin and peptide YY. In addition to its function in the control of energy balance, several other physiological roles have been attributed to NPY, including involvement in circadian rhythms, sexual function, anxiety responses and vascular resistance.

Synonyms: OTTHUMP00000201946; OTTHUMP00000201947; PYY4

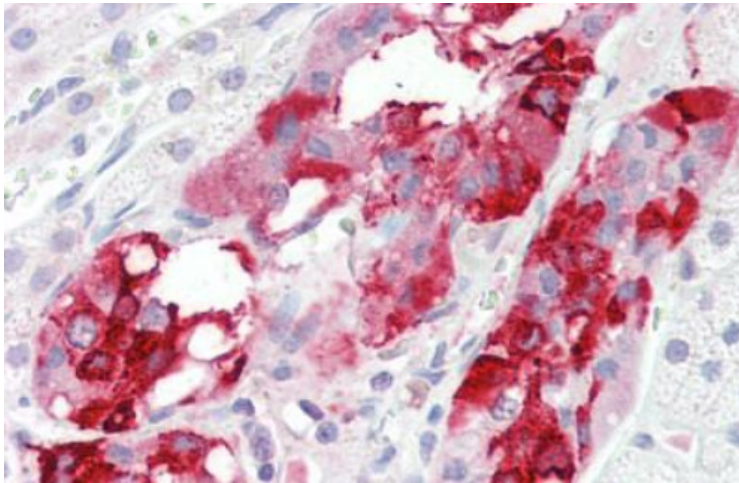
Protein Families: Druggable Genome, Secreted Protein, Transmembrane

Protein Pathways: Adipocytokine signaling pathway

Product images:



Human Brain, Cortex (formalin-fixed, paraffin-embedded) stained with NPY antibody AP22875PU-N at 1/100 followed by biotinylated goat anti-rabbit IgG secondary antibody, alkaline phosphatase-streptavidin and chromogen.



Human Adrenal (formalin-fixed, paraffin-embedded) stained with NPY antibody AP22875PU-N at 1/100 followed by biotinylated goat anti-rabbit IgG secondary antibody, alkaline phosphatase-streptavidin and chromogen.