

Product datasheet for **AP22871PU-N**

Glutathione Peroxidase 1 (GPX1) (130-142) Goat Polyclonal Antibody

Product data:

Product Type:	Primary Antibodies
Applications:	ELISA, IHC, WB
Recommended Dilution:	ELISA: 1/32000. Immunohistochemistry on Paraffin Sections: 3.75 µg/ml. Western Blot: 1 - 3 µg/ml.
Reactivity:	Human, Equine, Monkey
Host:	Goat
Clonality:	Polyclonal
Immunogen:	GPX1 antibody was raised against synthetic peptide from an internal region of human GPX1
Specificity:	This antibody reacts to Glutathione Peroxidase (GPX1) at aa 130-142.
Formulation:	Tris-buffered saline, pH 7.3, 0.5% BSA, 0.02% sodium azide State: Aff - Purified State: Liquid purified Ig fraction
Concentration:	lot specific
Purification:	Immunoaffinity Chromatography
Conjugation:	Unconjugated
Storage:	Store the antibody undiluted at 2-8°C for one month or (in aliquots) at -20°C for longer. Avoid repeated freezing and thawing.
Stability:	Shelf life: one year from despatch.
Gene Name:	glutathione peroxidase 1
Database Link:	Entrez Gene 2876 Human P07203
Background:	GPX1 / Glutathione Peroxidase is a member of the glutathione peroxidase family. Glutathione peroxidase functions in the detoxification of hydrogen peroxide, and is one of the most important antioxidant enzymes in humans. This protein is one of only a few proteins known in higher vertebrates to contain selenocysteine, which occurs at the active site of glutathione peroxidase and is coded by UGA, that normally functions as a translation termination codon.
Synonyms:	GSHPx-1, Cellular glutathione peroxidase

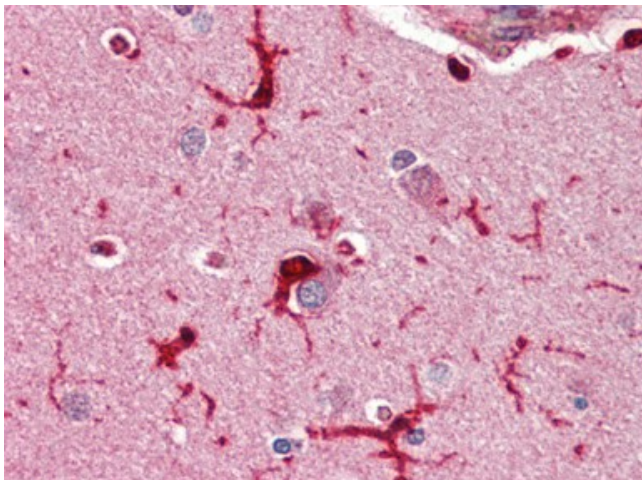


[View online »](#)

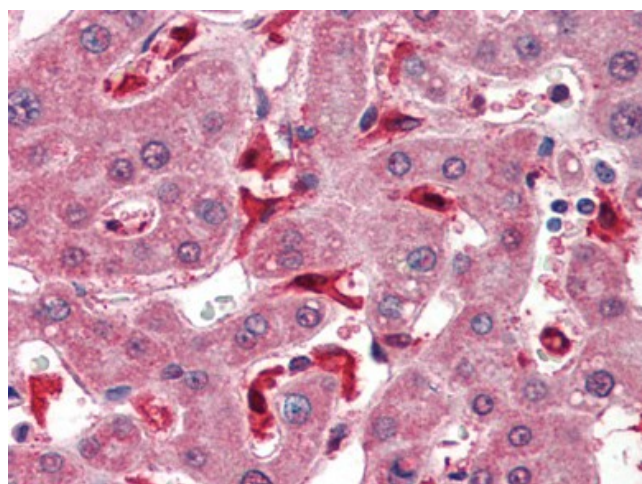
Protein Families: Druggable Genome

Protein Pathways: Amyotrophic lateral sclerosis (ALS), Arachidonic acid metabolism, Glutathione metabolism, Huntington's disease

Product images:



Human Brain, Cortex (formalin-fixed, paraffin-embedded) stained with GPX1 antibody at 3.75 ug/ml followed by biotinylated anti-goat IgG secondary antibody, alkaline phosphatase-streptavidin and chromogen.



Human Liver (formalin-fixed, paraffin-embedded) stained with GPX1 antibody at 3.75 ug/ml followed by biotinylated anti-goat IgG secondary antibody, alkaline phosphatase-streptavidin and chromogen.