

Product datasheet for **AP22866PU-N**

ASK1 (MAP3K5) (C-term) Rabbit Polyclonal Antibody

Product data:

Product Type:	Primary Antibodies
Applications:	ELISA, IF, IHC, WB
Recommended Dilution:	ELISA. Immunocytochemistry. Immunohistochemistry on Paraffin Sections: 5 µg/ml. Western Blot.
Reactivity:	Human, Mouse
Host:	Rabbit
Clonality:	Polyclonal
Immunogen:	MAP3K5 antibody was raised against synthetic peptide - KLH conjugated
Specificity:	This antibody reacts to MAP Kinase Kinase Kinase 5 (MEKK5/ASK1) (MAP3K5).
Formulation:	PBS containing 0.02% sodium azide. State: Purified State: Liquid purified Ig fraction
Concentration:	lot specific
Purification:	Immunoaffinity Chromatography
Conjugation:	Unconjugated
Storage:	Store the antibody undiluted at 2-8°C.
Stability:	Shelf life: one year from despatch.
Gene Name:	mitogen-activated protein kinase kinase kinase 5
Database Link:	Entrez Gene 26408 Mouse Entrez Gene 4217 Human Q99683



[View online »](#)

Background:

MEKK5, also known as ASK1 for apoptosis signal-regulating kinase-1, is a MAP3K type protein kinase and a member of the JNK and p38 MAP kinase signaling pathways. The protein contains a centrally located protein kinase domain, a N-terminal extension that includes binding regions for the Fas-associated adapter protein Daxx and the redox-sensing enzyme thioredoxin, and a C-terminal extension that binds members of the TNFR-associated factor (TRAF) family. MEKK5 regulates the JNK cascade by phosphorylating MKK4/MAP2K4 and p38 cascades by phosphorylating MEK3/MAP2K3 and MKK6/MAP2K6. MEKK5 has been shown to be activated by oxidant stress, tumor necrosis factor (TNF) via TRAF2 and Fas via Daxx. MEKK5 also can be activated by Fas-Daxx in a kinase-independent apoptotic pathway.

Synonyms:

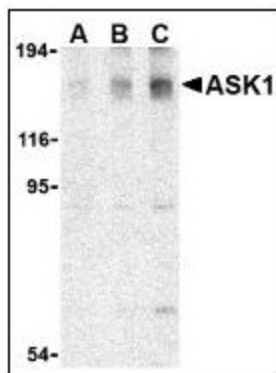
MAPK/ERK kinase kinase 5, MAPKKK5, MAP3K5

Protein Families:

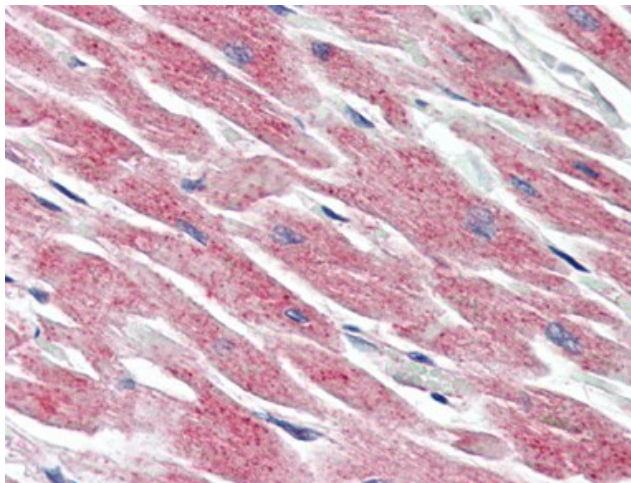
Druggable Genome, Protein Kinase

Protein Pathways:

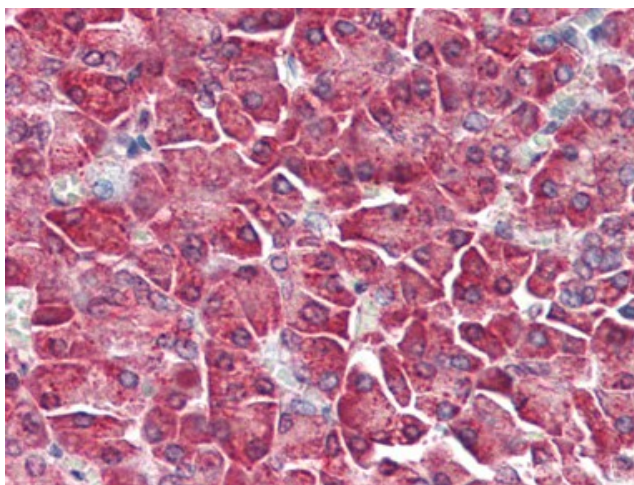
Amyotrophic lateral sclerosis (ALS), MAPK signaling pathway, Neurotrophin signaling pathway

Product images:


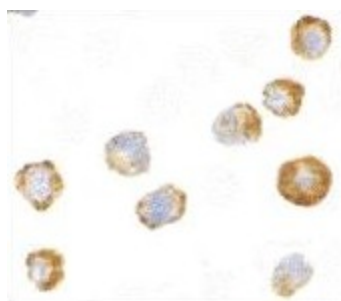
Western blot analysis of ASK1 in SW1353 cell lysate with at (A) 0.5, (B) 1, and (C) 2 ug/ml.



Human Heart (formalin-fixed, paraffin-embedded) stained with MAP3K5 antibody at 5 ug/ml followed by biotinylated goat anti-rabbit IgG secondary antibody, alkaline phosphatase-streptavidin and chromogen.



Human Pancreas (formalin-fixed, paraffin-embedded) stained with MAP3K5 antibody at 5 ug/ml followed by biotinylated goat anti-rabbit IgG secondary antibody, alkaline phosphatase-streptavidin and chromogen.



Immunocytochemistry of ASK1 in A431 cells with at 2 ug/ml.