

Product datasheet for **AP22865PU-N**

TLR3 (C-term) Rabbit Polyclonal Antibody

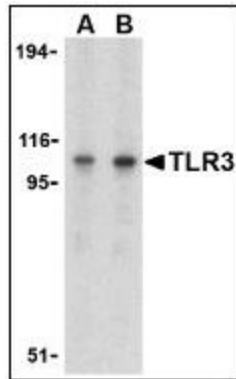
Product data:

Product Type:	Primary Antibodies
Applications:	ELISA, IF, IHC, WB
Recommended Dilution:	ELISA. Immunocytochemistry. Immunohistochemistry on Paraffin Sections: 5 µg/ml. Western Blot: 1 - 2 µg/ml.
Reactivity:	Human, Mouse
Host:	Rabbit
Clonality:	Polyclonal
Immunogen:	TLR3 antibody was raised against synthetic peptide - KLH conjugated
Specificity:	This antibody reacts to Toll-like Receptor 3 (TLR3).
Formulation:	PBS containing 0.02% sodium azide. State: Purified State: Liquid purified Ig fraction
Concentration:	lot specific
Purification:	Ion Exchange Chromatography
Conjugation:	Unconjugated
Storage:	Store the antibody undiluted at 2-8°C.
Stability:	Shelf life: one year from despatch.
Gene Name:	toll like receptor 3
Database Link:	Entrez Gene 142980 Mouse Entrez Gene 7098 Human O15455
Synonyms:	Toll-like receptor 3
Protein Families:	Druggable Genome, Transmembrane
Protein Pathways:	Toll-like receptor signaling pathway

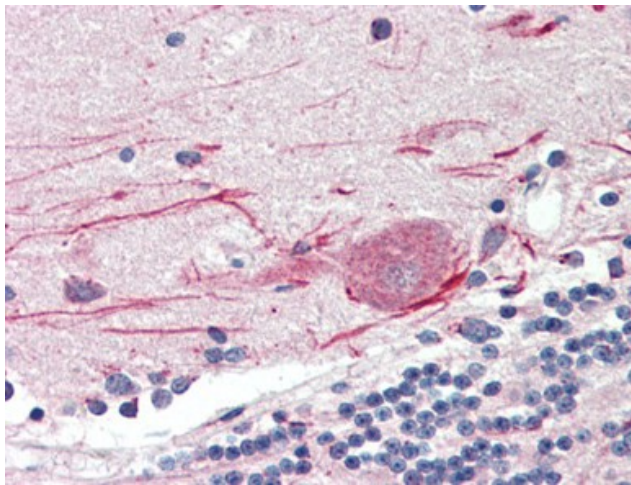


[View online »](#)

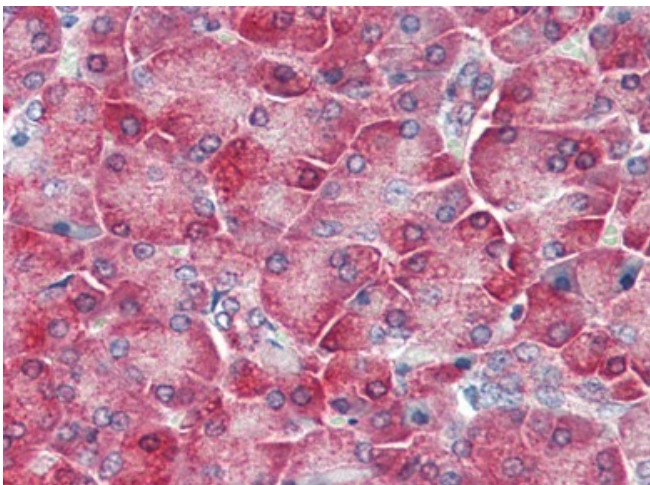
Product images:



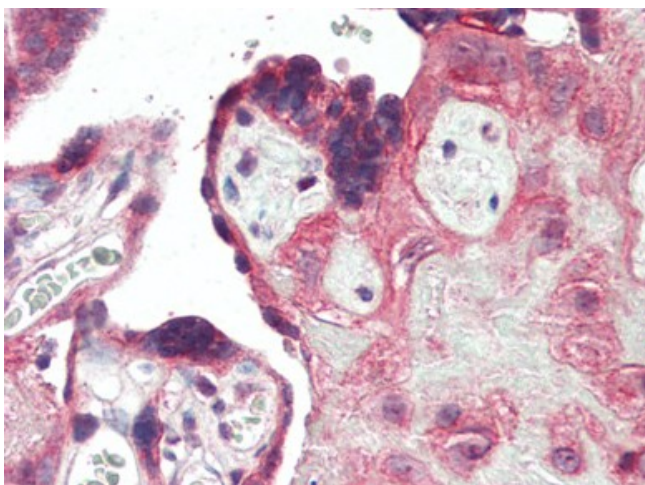
Western blot analysis of TLR3 in Daudi cell lysate with TLR3 antibody (AP22865PU-N) at (A) 1 and (B) 2 ug/ml.



Human Brain, Cerebellum (formalin-fixed, paraffin-embedded) stained with TLR3 antibody AP22865PU-N at 5 ug/ml followed by biotinylated goat anti-rabbit IgG secondary antibody, alkaline phosphatase-streptavidin and chromogen.



Human Pancreas (formalin-fixed, paraffin-embedded) stained with TLR3 antibody AP22865PU-N at 5 ug/ml followed by biotinylated goat anti-rabbit IgG secondary antibody, alkaline phosphatase-streptavidin and chromogen.



Human Placenta (formalin-fixed, paraffin-embedded) stained with TLR3 antibody AP22865PU-N at 5 ug/ml followed by biotinylated goat anti-rabbit IgG secondary antibody, alkaline phosphatase-streptavidin and chromogen.



Immunocytochemistry of TLR3 in EL4 cells with TLR3 antibody (AP22865PU-N) at 1 ug/ml.