

## Product datasheet for **AP22863PU-N**

### Beclin 1 (BECN1) (C-term) Rabbit Polyclonal Antibody

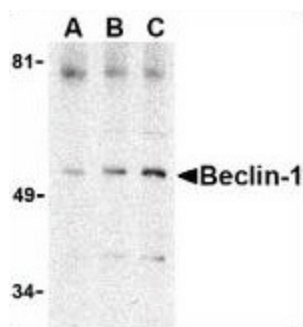
#### Product data:

Product Type:	Primary Antibodies
Applications:	ELISA, IF, IHC, WB
Recommended Dilution:	<b>ELISA.</b> <b>Immunocytochemistry.</b> <b>Immunohistochemistry on Paraffin Sections:</b> 2.5 µg/ml. <b>Western Blot:</b> 0.5 - 1 µg/ml.
Reactivity:	Human, Mouse
Host:	Rabbit
Clonality:	Polyclonal
Immunogen:	Synthetic 16 amino acid peptide from near the carboxy terminus of human Beclin-1
Specificity:	This antibody detects Beclin-1 at C-term.
Formulation:	PBS containing 0.02% Sodium azide State: Purified State: Liquid Ig fraction
Concentration:	lot specific
Purification:	Immunoaffinity chromatography
Conjugation:	Unconjugated
Storage:	Store undiluted at 2-8°C for one month or (in aliquots) at -20°C to -80°C for longer. Avoid repeated freezing and thawing.
Stability:	Shelf life: one year from despatch.
Gene Name:	beclin 1
Database Link:	<a href="#">Entrez Gene 56208 Mouse</a> <a href="#">Entrez Gene 8678 Human</a> <a href="#">Q14457</a>
Synonyms:	BECN1, GT197
Protein Families:	Druggable Genome
Protein Pathways:	Regulation of autophagy

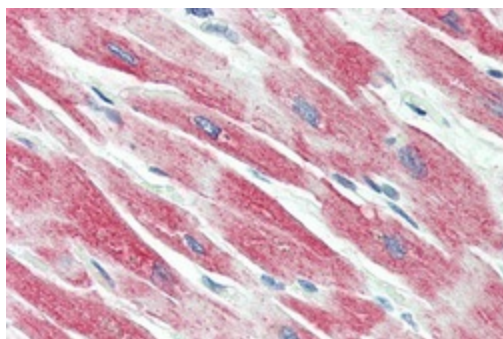


[View online »](#)

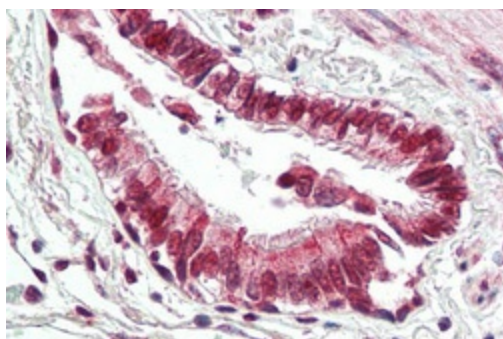
## Product images:



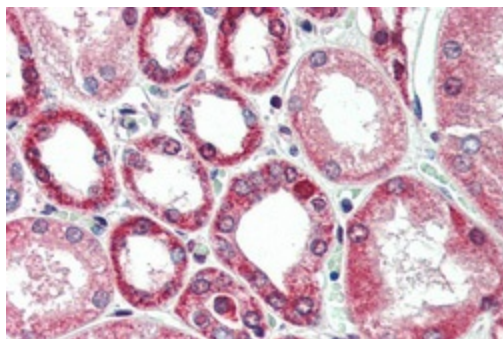
Western blot analysis of Beclin-1 (arrow) in A431 cell lysate with Beclin-1 antibody, at (A) 0.5, (B) 1 and (C) 2 µg/ml.



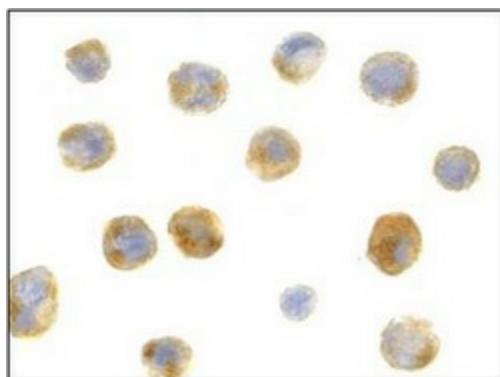
Immunohistochemistry staining of human heart (Formalin-fixed, Paraffin-embedded tissue after heat-induced antigen retrieval) using Beclin-1 antibody. (C-term).



Immunohistochemistry staining of human lung / respiratory epithelium (Formalin-fixed, Paraffin-embedded tissue after heat-induced antigen retrieval) using Beclin-1 antibody. (C-term).



Immunohistochemistry staining of human kidney (Formalin-fixed, Paraffin-embedded tissue after heat-induced antigen retrieval) using Beclin-1 antibody. (C-term).



Immunocytochemistry staining of A431 cells using Beclin-1 antibody. at 1 ug/ml.