

Product datasheet for **AP22858PU-N**

Angiotensin Converting Enzyme 2 (ACE2) (N-term) Rabbit Polyclonal Antibody

Product data:

Product Type:	Primary Antibodies
Applications:	ELISA, IHC, WB
Recommended Dilution:	ELISA. Immunohistochemistry on Paraffin Sections: 2.5 µg/ml. Western Blot: 0.5 - 2 µg/ml.
Reactivity:	Human
Host:	Rabbit
Clonality:	Polyclonal
Immunogen:	ACE2 antibody was raised against synthetic peptide
Specificity:	This antibody reacts to Angiotensin I Converting Enzyme 2 (ACE2).
Formulation:	PBS containing 0.02% sodium azide State: Purified State: Liquid purified Ig fraction
Concentration:	lot specific
Purification:	Immunoaffinity Chromatography
Conjugation:	Unconjugated
Storage:	Store the antibody undiluted at 2-8°C.
Stability:	Shelf life: one year from despatch.
Gene Name:	Homo sapiens angiotensin I converting enzyme 2 (ACE2)
Database Link:	Entrez Gene 59272 Human Q9BYF1



[View online »](#)

Background:

Angiotensin-Converting Enzyme 2 (ACE2) plays a central role in vascular, renal, and myocardial physiology. In contrast to its homolog ACE, ACE2 expression is restricted to heart, kidney, and testis. Recently, ACE2 has also been shown to be a functional receptor of the SARS coronavirus. The normal function of ACE2 is to convert the inactive vasoconstrictor angiotensin I (AngI) to Ang1-9 and the active form AngII to Ang1-7, unlike ACE, which converts AngI to AngII. While the role of these vasoactive peptides is not well understood, lack of ACE2 expression in *ace2-/-ace2-* mice leads to severely reduced cardiac contractility, indicating its importance in regulating heart function.

Synonyms:

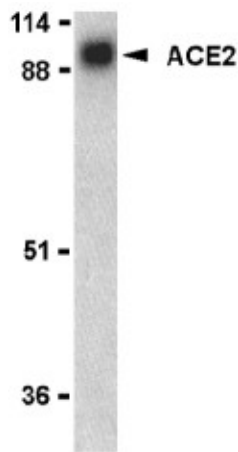
Angiotensin-converting enzyme 2

Protein Families:

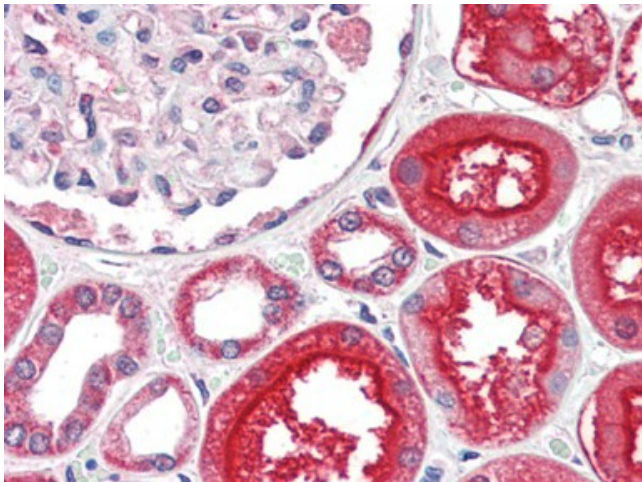
Druggable Genome, Secreted Protein, Transmembrane

Protein Pathways:

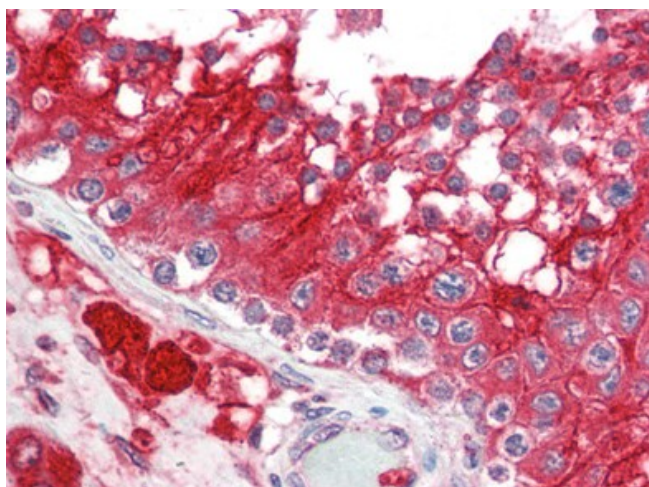
Renin-angiotensin system

Product images:

Western blot analysis of ACE2 in human kidney lysate with ACE2 antibody (AP22858PU-N) at 1 ug/ml.



Human Kidney (formalin-fixed, paraffin-embedded) stained with ACE2 antibody AP22858PU-N at 2.5 ug/ml followed by biotinylated goat anti-rabbit IgG secondary antibody, alkaline phosphatase-streptavidin and chromogen.



Human Testis (formalin-fixed, paraffin-embedded) stained with ACE2 antibody AP22858PU-N at 2.5 ug/ml followed by biotinylated goat anti-rabbit IgG secondary antibody, alkaline phosphatase-streptavidin and chromogen.