

Product datasheet for **AP22847PU-N**

CCR3 (N-term) Rabbit Polyclonal Antibody

Product data:

Product Type:	Primary Antibodies
Applications:	ELISA, IHC, WB
Recommended Dilution:	ELISA. Immunohistochemistry on Paraffin Sections: 2.5 µg/ml. Western Blot.
Reactivity:	Human, Mouse, Rat
Host:	Rabbit
Clonality:	Polyclonal
Immunogen:	Synthetic peptide corresponding to acetylated N-terminal sequence of sheep 14-3-3 epsilon. (N-TERMINAL)
Specificity:	This antibody reacts to C-C Chemokine Receptor 3 (CCR3).
Formulation:	PBS containing 0.02% sodium azide. State: Purified State: Liquid purified Ig fraction
Concentration:	lot specific
Purification:	Immunoaffinity Chromatography
Conjugation:	Unconjugated
Storage:	Store the antibody undiluted at 2-8°C.
Stability:	Shelf life: one year from despatch.
Gene Name:	C-C motif chemokine receptor 3
Database Link:	Entrez Gene 12771 Mouse Entrez Gene 117027 Rat Entrez Gene 1232 Human P51677



[View online »](#)

Background:

CCR3, a Chemokine Receptor, was cloned from human eosinophils (Daugherty et al., 1996). This receptor binds specifically the chemokine eotaxin and activates eosinophil leukocytes. CCR3 also responds to a variety of beta-chemokines (CC motif) including RANTES, monocyte chemotactic proteins, and mucosae-associated epithelial chemokine (MEC). CCR3 is a key mediator of allergic reactions; activation of this receptor stimulates the production of interleukins required for activation of basophils and eosinophils (Sallusto et al., 1997). CCR3 plays a role in the progression and pathogenesis of inflammatory diseases such as asthma, multiple sclerosis, and Alzheimer's disease. This receptor also facilitates HIV-1 penetration in heart and brain.

Synonyms:

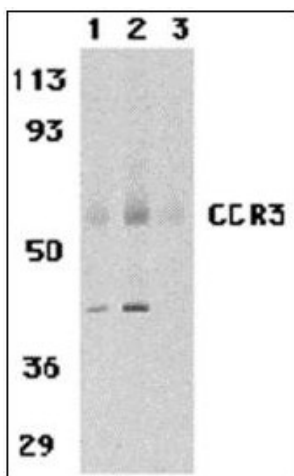
C-C chemokine receptor type 3, C-C CKR-3, CC-CKR-3, CCR-3, CKR3, CMKBR3

Protein Families:

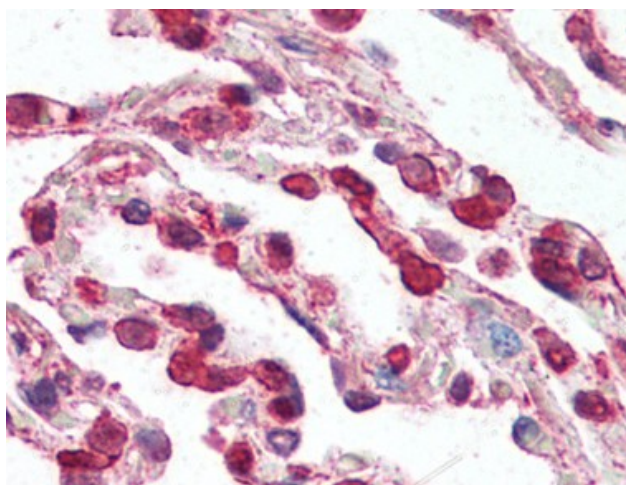
Druggable Genome, GPCR, Transmembrane

Protein Pathways:

Chemokine signaling pathway, Cytokine-cytokine receptor interaction

Product images:


Western blot analysis of CCR3 in human spleen tissue lysates with CCR3 antibody (AP22847PU-N) at 1 (lane 1) and 2 ug/ml (lane 2), and 2 ug/ml in the presence of blocking peptide (lane 3).



Human Lung (formalin-fixed, paraffin-embedded) stained with CCR3 antibody AP22847PU-N at 2.5 ug/ml followed by biotinylated goat anti-rabbit IgG secondary antibody, alkaline phosphatase-streptavidin and chromogen.