

Product datasheet for **AP22846PU-N**

SGLT1 (SLC5A1) Rabbit Polyclonal Antibody

Product data:

Product Type:	Primary Antibodies
Applications:	IHC, WB
Recommended Dilution:	Immunohistochemistry on Paraffin Sections: 5 µg/ml. Western Blot: 0.5 - 4 µg/ml.
Reactivity:	Human
Host:	Rabbit
Clonality:	Polyclonal
Immunogen:	SLC5A1 antibody was raised against synthetic peptide surrounding amino acid 594 of human SGLT-1.
Specificity:	This antibody reacts to Solute Carrier Family 5 (Sodium/Glucose Cotransporter), Member 1 (SLC5A1).
Formulation:	PBS, pH 7.2 containing 30% glycerol, 0.5% BSA, 0.01% Thimerosal. State: Purified State: Liquid purified Ig fraction
Concentration:	lot specific
Purification:	Protein A Chromatography
Conjugation:	Unconjugated
Storage:	Store the antibody undiluted at 2-8°C for one month or (in aliquots) at -20°C for longer. Avoid repeated freezing and thawing.
Stability:	Shelf life: one year from despatch.
Gene Name:	solute carrier family 5 member 1
Database Link:	Entrez Gene 6523 Human P13866
Background:	Solute Carrier Family 5 Member 1 (Slc5a1/SGLT1) is a member of the sodium dependent glucose transporters also known as co transporters or symporters. It is an integral membrane protein involved in the active transport of glucose and galactose across the membrane of cells lining the gi tract and kidney. Transport is driven by the sodium/potassium ATPase.

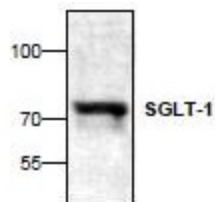


[View online »](#)

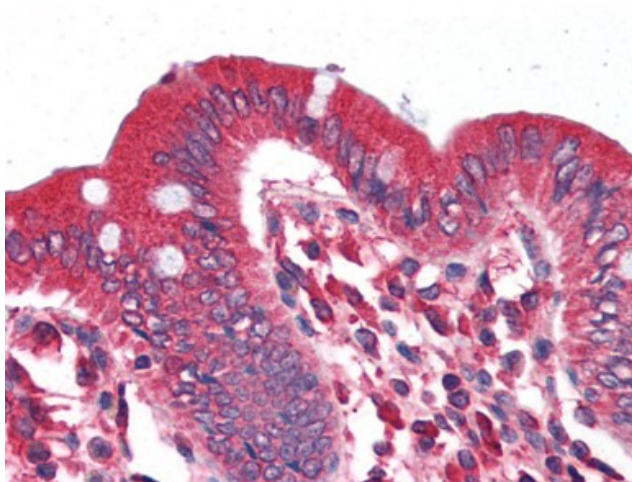
Synonyms: Sodium/glucose cotransporter 1, NAGT

Protein Families: Druggable Genome, Transmembrane

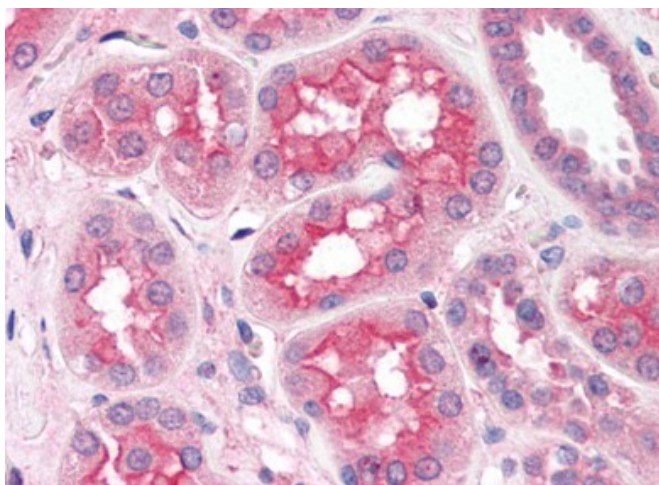
Product images:



Western blot analysis with of SGLT-1 expression in Jurkat cell lysate



Human Colon (formalin-fixed, paraffin-embedded) stained with SLC5A1 antibody at 5 ug/ml followed by biotinylated goat anti-rabbit IgG secondary antibody, alkaline phosphatase-streptavidin and chromogen.



Human Kidney (formalin-fixed, paraffin-embedded) stained with SLC5A1 antibody at 5 ug/ml followed by biotinylated goat anti-rabbit IgG secondary antibody, alkaline phosphatase-streptavidin and chromogen.