

Product datasheet for **AP22845PU-N**

Superoxide Dismutase 1 (SOD1) Rabbit Polyclonal Antibody

Product data:

Product Type:	Primary Antibodies
Applications:	IHC, IP, WB
Recommended Dilution:	Immunohistochemistry on Frozen Sections. Immunohistochemistry on Paraffin Sections: 5 µg/ml. Immunoprecipitation: 20 µg/ml. Western Blot: 0.5 - 4 µg/ml.
Reactivity:	Human, Equine, Guinea Pig, Mouse, Rat
Host:	Rabbit
Clonality:	Polyclonal
Immunogen:	Synthetic peptide surrounding amino acid 131 of Human SOD
Specificity:	This antibody recognizes Cu/Zn Superoxide Dismutase (SOD1).
Formulation:	PBS State: Purified State: Liquid purified Ig fraction Stabilizer: 30% Glycerol, 0.5% BSA Preservative: 0.01% Thimerosal
Concentration:	lot specific
Purification:	Affinity Chromatography
Conjugation:	Unconjugated
Storage:	Store undiluted at 2-8°C for one month or (in aliquots) at -20°C for longer. Avoid repeated freezing and thawing.
Stability:	Shelf life: one year from despatch.
Gene Name:	superoxide dismutase 1, soluble
Database Link:	<u>Entrez Gene 20655 Mouse</u> <u>Entrez Gene 24786 Rat</u> <u>Entrez Gene 6647 Human P00441</u>



[View online »](#)

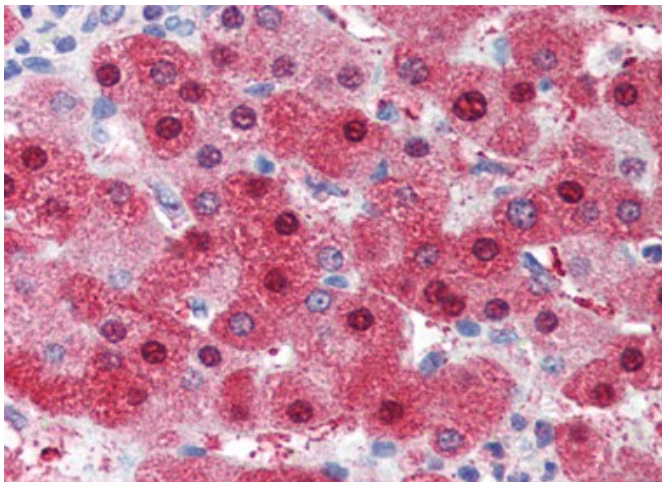
Background: Superoxide dismutases catalyzes the conversion of single electron reduced species of molecular oxygen to hydrogen peroxide and oxygen. Cu, Zn superoxide dismutase (SOD1) is widely distributed and comprises 90% of total SOD. Mutations in SOD1 cause a form of familial ALS. Oxidative modifications and aggregation of SOD1 has been associated with Alzheimer's and Parkinson's disease.

Synonyms: SOD-1, CuZn-SOD, CuZnSOD, IPOA, ALS1

Protein Families: Druggable Genome

Protein Pathways: Amyotrophic lateral sclerosis (ALS), Huntington's disease, Prion diseases

Product images:



Human Liver (formalin-fixed, paraffin-embedded) stained with SOD1 antibody at 5 ug/ml followed by biotinylated goat anti-rabbit IgG secondary antibody, alkaline phosphatase-streptavidin and chromogen.