

Product datasheet for **AP22831PU-N**

EDG7 (LPAR3) (Internal) Rabbit Polyclonal Antibody

Product data:

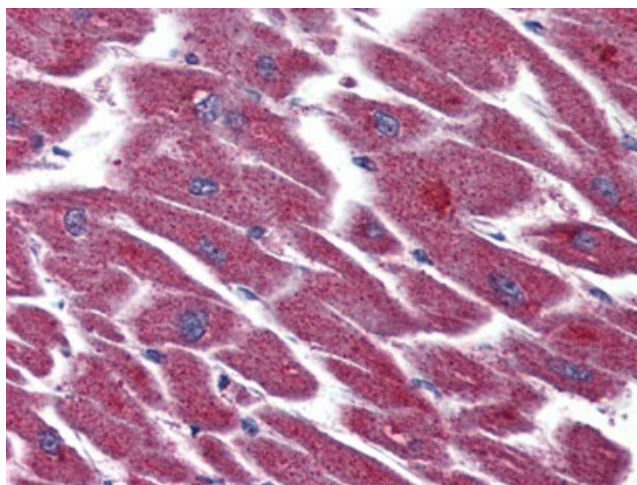
Product Type:	Primary Antibodies
Applications:	ELISA, IHC
Recommended Dilution:	ELISA. Immunohistochemistry on Paraffin Sections: 5 µg/ml.
Reactivity:	Human, Mouse, Rat, Monkey
Host:	Rabbit
Clonality:	Polyclonal
Immunogen:	Synthetic 16 amino acid peptide from internal region of human EDG7
Specificity:	This antibody reacts to internal region of Lysophosphatidic Acid Receptor 3 (LPAR3/EDG7).
Formulation:	PBS containing 0.09% sodium azide as preservative State: Aff - Purified State: Liquid purified Ig fraction
Concentration:	lot specific
Purification:	Immunoaffinity Chromatography
Conjugation:	Unconjugated
Storage:	Store the antibody undiluted at 2-8°C for one month or (in aliquots) at -20°C for longer. Avoid repeated freezing and thawing.
Stability:	Shelf life: one year from despatch.
Gene Name:	lysophosphatidic acid receptor 3
Database Link:	Entrez Gene 65086 Mouse Entrez Gene 66025 Rat Entrez Gene 710828 Monkey Entrez Gene 23566 Human Q9UBY5
Background:	Receptor for lysophosphatidic acid (LPA), a mediator of diverse cellular activities. May play a role in the development of ovarian cancer. Seems to be coupled to the G(i)/G(o) and G(q) families of heteromeric G proteins.
Synonyms:	EDG7, LPAR3, LPA-3, HOFNH30, GPCR
Protein Families:	Druggable Genome, GPCR, Transmembrane



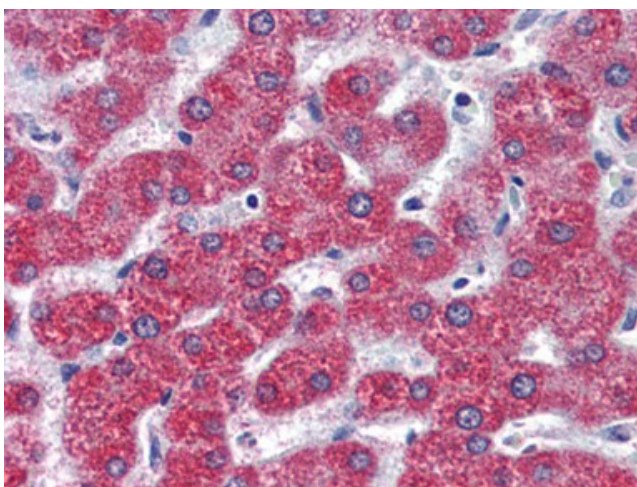
[View online »](#)

Protein Pathways: Neuroactive ligand-receptor interaction

Product images:



Human Heart (formalin-fixed, paraffin-embedded) stained with LPAR3 antibody at 5 ug/ml followed by biotinylated goat anti-rabbit IgG secondary antibody, alkaline phosphatase-streptavidin and chromogen.



Human Liver (formalin-fixed, paraffin-embedded) stained with LPAR3 antibody at 5 ug/ml followed by biotinylated goat anti-rabbit IgG secondary antibody, alkaline phosphatase-streptavidin and chromogen.