

Product datasheet for **AP22825PU-N**

EGFR Sheep Polyclonal Antibody

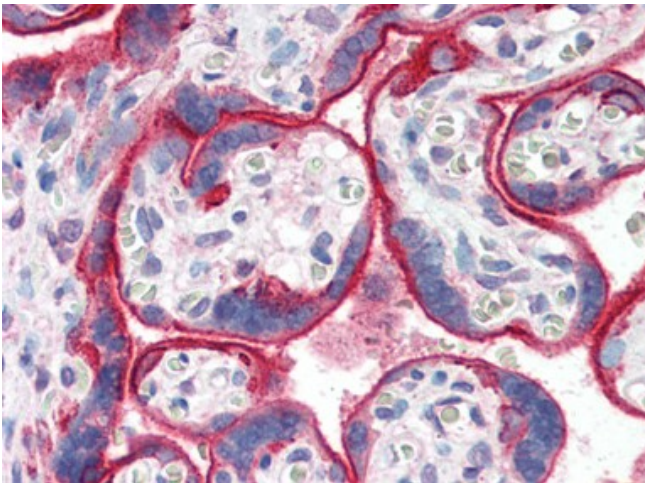
Product data:

Product Type:	Primary Antibodies
Applications:	IF, IHC, IP, WB
Recommended Dilution:	Immunocytochemistry. Immunohistochemistry on Paraffin Sections: 5 µg/ml. Immunoprecipitation: 10 - 12 µg/ml. Western Blot.
Reactivity:	Chicken, Human, Mouse, Rat
Host:	Sheep
Clonality:	Polyclonal
Immunogen:	Synthetic 20 amino acid peptide of human EGFR representing a portion of the internal domain proximal to a phosphorylation region
Specificity:	This antibody reacts to Epidermal Growth Factor Receptor (EGFR). This EGFR antibody recognizes a region of the internal domain. Antibody binding blocks phosphorylation and does not interfere with EGF binding.
Formulation:	PBS, pH 7.4 State: Purified State: Liquid purified Ig fraction
Concentration:	lot specific
Purification:	Protein G Chromatography
Conjugation:	Unconjugated
Storage:	Store undiluted at 2-8°C for one month or (in aliquots) at -20°C for longer. Avoid repeated freezing and thawing.
Stability:	Shelf life: one year from despatch.
Gene Name:	epidermal growth factor receptor
Database Link:	<u>Entrez Gene 13649 Mouse</u> <u>Entrez Gene 24329 Rat</u> <u>Entrez Gene 1956 Human P00533</u>

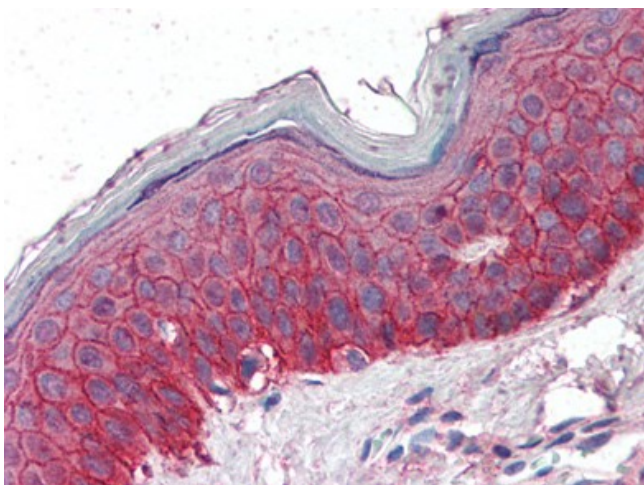


[View online »](#)

- Background:** Epidermal growth factor receptor (EGFR) is a tyrosine protein kinase comprised of two different components of different molecular weights. Both components contain phosphotyrosine and phosphothreonine but only the higher molecular weight component contains phosphoserine. EGFR signaling involves small GTPases of the Rho family and EGFR trafficking involves small GTPases of the Rab family. EGFR expression is widespread in both normal and cancerous tissues.
- Synonyms:** Epidermal growth factor receptor, EGF Receptor, erbB-1, c-ErbB-1
- Protein Families:** Adult stem cells, Cancer stem cells, Druggable Genome, ES Cell Differentiation/IPS, Protein Kinase, Secreted Protein, Stem cell relevant signaling - JAK/STAT signaling pathway, Transmembrane
- Protein Pathways:** Adherens junction, Bladder cancer, Calcium signaling pathway, Colorectal cancer, Cytokine-cytokine receptor interaction, Dorso-ventral axis formation, Endocytosis, Endometrial cancer, Epithelial cell signaling in Helicobacter pylori infection, ErbB signaling pathway, Focal adhesion, Gap junction, Glioma, GnRH signaling pathway, MAPK signaling pathway, Melanoma, Non-small cell lung cancer, Pancreatic cancer, Pathways in cancer, Prostate cancer, Regulation of actin cytoskeleton

Product images:

Human Placenta (formalin-fixed, paraffin-embedded) stained with EGFR antibody at 5 ug/ml followed by biotinylated secondary antibody, alkaline phosphatase-streptavidin and chromogen.



Human Skin (formalin-fixed, paraffin-embedded) stained with EGFR antibody at 5 ug/ml followed by biotinylated secondary antibody, alkaline phosphatase-streptavidin and chromogen.