

Product datasheet for **AP22821PU-N**

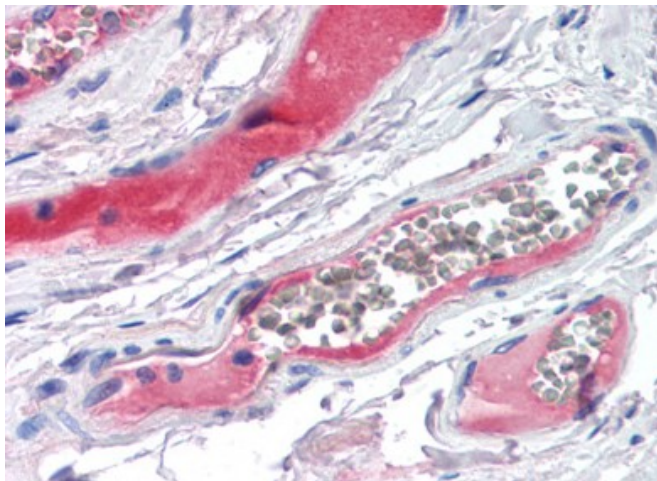
Plasma Kallikrein 1B (KLKB1) Sheep Polyclonal Antibody

Product data:

Product Type:	Primary Antibodies
Applications:	ELISA, Ie, IHC
Recommended Dilution:	ELISA. Immunoelectrophoresis. Immunohistochemistry on Paraffin Sections: 5 µg/ml.
Reactivity:	Human
Host:	Sheep
Isotype:	IgG
Clonality:	Polyclonal
Immunogen:	KLKB1 antibody was raised against human Prekallikrein (PK) purified from plasma.
Specificity:	This antibody reacts to Kallikrein B, Plasma (Fletcher Factor) 1 (KLKB1).
Formulation:	10 mM HEPES, pH 7.4 containing 0.15 M sodium chloride, 50% glycerol. State: Ig Fraction State: Liquid purified Ig fraction
Concentration:	lot specific
Purification:	Ammonium Sulfate Precipitation
Conjugation:	Unconjugated
Storage:	Store the antibody undiluted at 2-8°C for one month or (in aliquots) at -20°C for longer. Avoid repeated freezing and thawing.
Stability:	Shelf life: one year from despatch.
Gene Name:	kallikrein B1
Database Link:	Entrez Gene 3818 Human P03952
Synonyms:	Plasma kallikrein, Fletcher factor
Protein Families:	Druggable Genome, Protease
Protein Pathways:	Complement and coagulation cascades



[View online »](#)

Product images:

Human Small Intestine, Vessels (formalin-fixed, paraffin-embedded) stained with KLKB1 antibody at 5 ug/ml followed by biotinylated secondary antibody, alkaline phosphatase-streptavidin and chromogen.