

## Product datasheet for **AP22819PU-N**

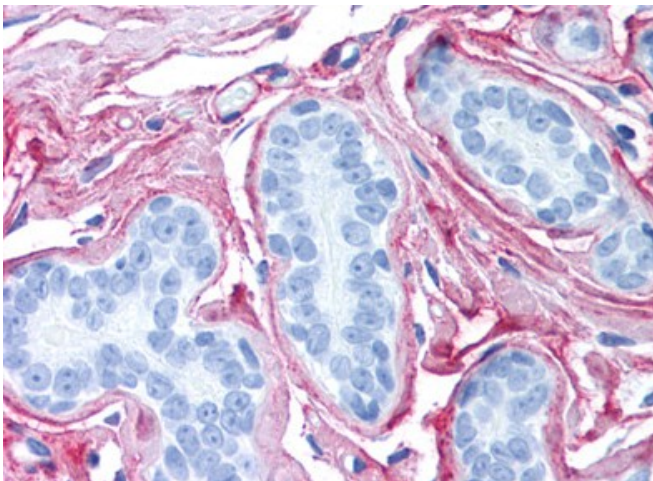
### Collagen VI (COL6A1) Rabbit Polyclonal Antibody

#### Product data:

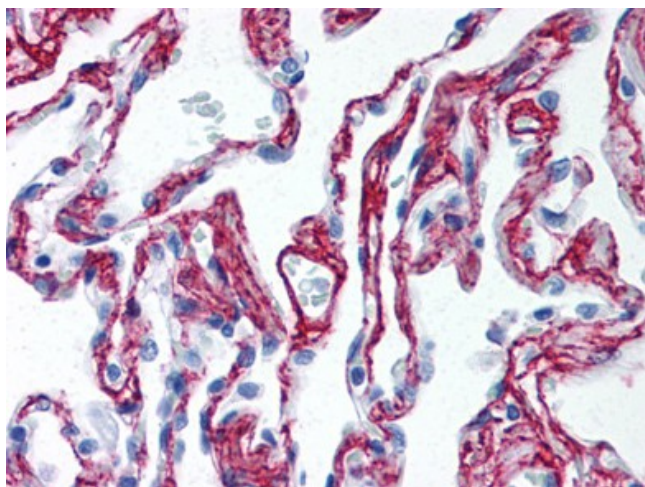
Product Type:	Primary Antibodies
Applications:	ELISA, IF, IHC, IP, WB
Recommended Dilution:	<b>ELISA.</b> <b>Immunofluorescence.</b> <b>Immunohistochemistry on Paraffin Sections:</b> 2.5 µg/ml. <b>Immunoprecipitation.</b> <b>Western Blot.</b>
Reactivity:	Human, Mammalian, Bovine
Host:	Rabbit
Clonality:	Polyclonal
Specificity:	This antibody reacts to Collagen VI.
Formulation:	0.125 M sodium borate, 0.075 M sodium chloride, 0.005 M EDTA,; pH 8.0, 0.01% sodium azide. State: Aff - Purified State: Liquid purified Ig fraction
Concentration:	lot specific
Purification:	Immunoaffinity Chromatography
Conjugation:	Unconjugated
Storage:	Store the antibody undiluted at 2-8°C for one month or (in aliquots) at -20°C for longer. Avoid repeated freezing and thawing.
Stability:	Shelf life: one year from despatch.
Gene Name:	collagen type VI alpha 1
Database Link:	<a href="#">Entrez Gene 1291 Human P12109</a>
Synonyms:	COL6A1
Protein Pathways:	ECM-receptor interaction, Focal adhesion



[View online »](#)

**Product images:**

Human Breast (formalin-fixed, paraffin-embedded) stained with Collagen VI antibody AP22819PU-N at 2.5 ug/ml followed by biotinylated goat anti-rabbit IgG secondary antibody, alkaline phosphatase-streptavidin and chromogen.



Human Lung (formalin-fixed, paraffin-embedded) stained with Collagen VI antibody AP22819PU-N at 2.5 ug/ml followed by biotinylated goat anti-rabbit IgG secondary antibody, alkaline phosphatase-streptavidin and chromogen.