

## Product datasheet for **AP22818PU-N**

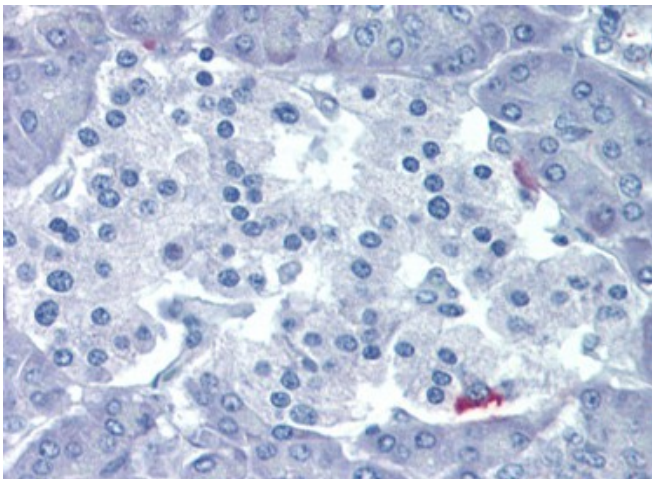
### MTLRP (GHRL) (N-term) Rabbit Polyclonal Antibody

#### Product data:

Product Type:	Primary Antibodies
Applications:	IHC
Recommended Dilution:	<b>Immunohistochemistry on Paraffin Sections:</b> 10 - 20 µg/ml.
Reactivity:	Equine, Feline, Human, Monkey, Porcine, Gorilla, Bear
Host:	Rabbit
Clonality:	Polyclonal
Immunogen:	GHRL antibody was raised against synthetic peptide mapping to the N-terminus of the active human Ghrelin
Specificity:	This antibody reacts to Growth Hormone Secretagogue, Ghrelin (GHRL) at N-terminus.
Formulation:	PBS, pH 7.2 containing 30% glycerol, 0.5% BSA, 5 mM EDTA and 0.01% thimerosal State: Aff - Purified State: Liquid purified Ig fraction
Concentration:	lot specific
Purification:	Protein A Chromatography
Conjugation:	Unconjugated
Storage:	Upon receipt, store the antibody at -20°C to -70°C. Avoid repeated freezing and thawing.
Stability:	Shelf life: one year from despatch.
Gene Name:	ghrelin/obestatin prepropeptide
Database Link:	<a href="#">Entrez Gene 51738 Human Q9UBU3</a>
Background:	Ghrelin is a hormone produced in the stomach before meals that causes hunger pangs.
Synonyms:	Appetite-regulating hormone, Growth hormone-releasing peptide, Ghrelin-27, Ghrelin-28, Obestatin, Motilin-related peptide, MTLRP
Protein Families:	Druggable Genome, Secreted Protein, Transmembrane



[View online »](#)

**Product images:**

Human Pancreas (formalin-fixed, paraffin-embedded) stained with GHRL antibody followed by biotinylated goat anti-rabbit IgG secondary antibody, alkaline phosphatase-streptavidin and chromogen.