

Product datasheet for **AP22815PU-N**

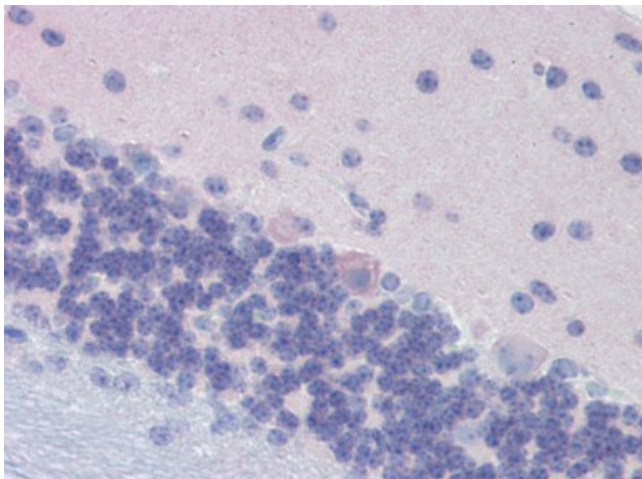
G0 Protein alpha (GNAO1) (345-354) Rabbit Polyclonal Antibody

Product data:

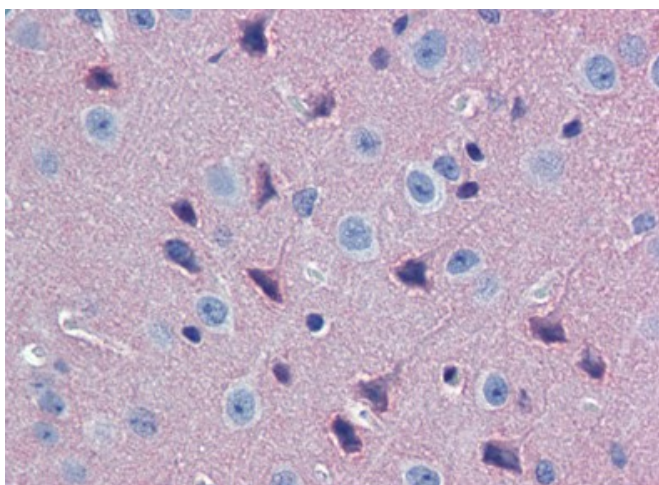
Product Type:	Primary Antibodies
Applications:	ELISA, IHC, WB
Recommended Dilution:	ELISA: 1/500 - 1/1000. Immunohistochemistry on Paraffin Sections: 10 µg/ml. Western Blot.
Reactivity:	Mouse, Drosophila
Host:	Rabbit
Isotype:	IgG
Clonality:	Polyclonal
Immunogen:	Synthetic peptide KLH- conjugated corresponding to amino acids 345-354 of the native molecule
Specificity:	This antibody reacts to Guanine Nucleotide Binding Protein (G Protein), Alpha Activating Activity Polypeptide O (GNAO1).
Formulation:	PBS containing 0.09% Sodium Azide as preservative. State: Ig Fraction State: Liquid Ig fraction
Concentration:	lot specific
Purification:	Ammonium Sulfate Precipitation
Conjugation:	Unconjugated
Storage:	Store the antibody undiluted at 2-8°C.
Stability:	Shelf life: one year from despatch.
Gene Name:	G protein subunit alpha o1
Database Link:	Entrez Gene 14681 Mouse P09471
Synonyms:	Gnao1, Gna0, Gnao
Protein Families:	Druggable Genome
Protein Pathways:	Long-term depression, Melanogenesis



[View online »](#)

Product images:

Mouse Brain, Cerebellum (formalin-fixed, paraffin-embedded) stained with GNAO1 antibody AP22815PU-N followed by biotinylated goat anti-rabbit IgG secondary antibody, alkaline phosphatase-streptavidin and chromogen.



Mouse Brain, Cortex (formalin-fixed, paraffin-embedded) stained with GNAO1 antibody AP22815PU-N followed by biotinylated goat anti-rabbit IgG secondary antibody, alkaline phosphatase-streptavidin and chromogen.