

Product datasheet for **AP22813AF-N**

Collagen I (COL1A1) Rabbit Polyclonal Antibody

Product data:

Product Type:	Primary Antibodies
Applications:	ELISA, IF, IHC
Recommended Dilution:	ELISA. Immunofluorescence. Immunohistochemistry on Paraffin Sections: 1/100.
Reactivity:	Human
Host:	Rabbit
Isotype:	IgG
Clonality:	Polyclonal
Immunogen:	Collagen I antibody was raised against human placental collagen Type I.
Specificity:	This antibody recognizes Collagen I. <u>Cross-reactivity:</u> Human Collagen type I: 100% Human Collagen type II: < 0.5% Human Collagen type III: < 25% Human Collagen type IV: < 0.5% Human Collagen type V: < 0.5% Human Fibronectin: < 0.5% Human Albumin: < 0.5% Human Immunoglobulin: < 0.5%
Formulation:	0.15M sodium chloride, 10mM sodium phosphate, pH 7.5 containing 0.1% Mannitol and 0.1% Dextran as stabilizers. No preservative. State: Azide Free State: Liquid Ig fraction
Purification:	Ammonium Sulfate Precipitation
Conjugation:	Unconjugated
Storage:	Store the antibody undiluted at 2-8°C for one month or (in aliquots) at -20°C for longer. Avoid repeated freezing and thawing.
Stability:	Shelf life: one year from despatch.



[View online »](#)

Gene Name: collagen type I alpha 1

Database Link: [Entrez Gene 1277 Human P02452](#)

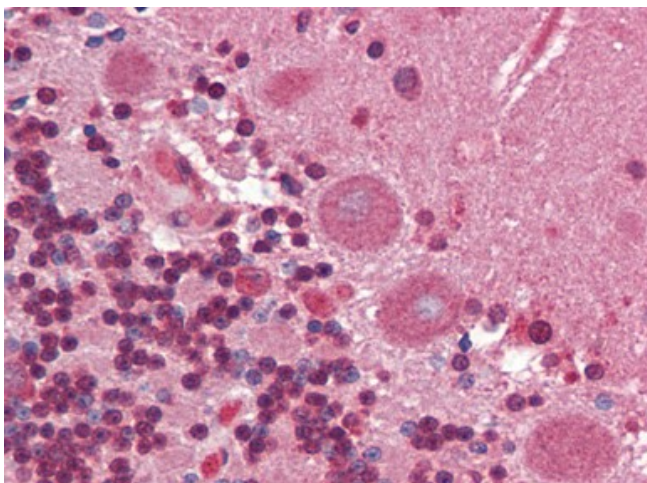
Background: Collagens are highly conserved throughout evolution and are characterised by an uninterrupted "Glycine X Y" triplet repeat that is a necessary part of the triple helical structure. Type I collagen (95 kDa) is found in bone, cornea, skin and tendon. Mutations in the encoding gene are associated with osteogenesis imperfecta, Ehlers Danlos syndrome, and idiopathic osteoporosis. Reciprocal translocations between chromosomes 17 and 22, where this gene and the gene for Platelet-derived growth factor beta are located, are associated with a particular type of skin tumor called dermatofibrosarcoma protuberans, resulting from unregulated expression of the growth factor.

Synonyms: COL1A1, COL1A2, Alpha-1 type I collagen, Alpha-2 type I collagen

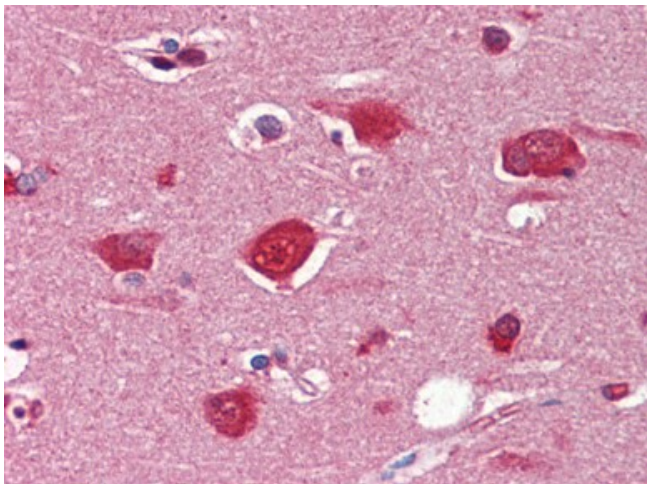
Protein Families: Druggable Genome

Protein Pathways: ECM-receptor interaction, Focal adhesion

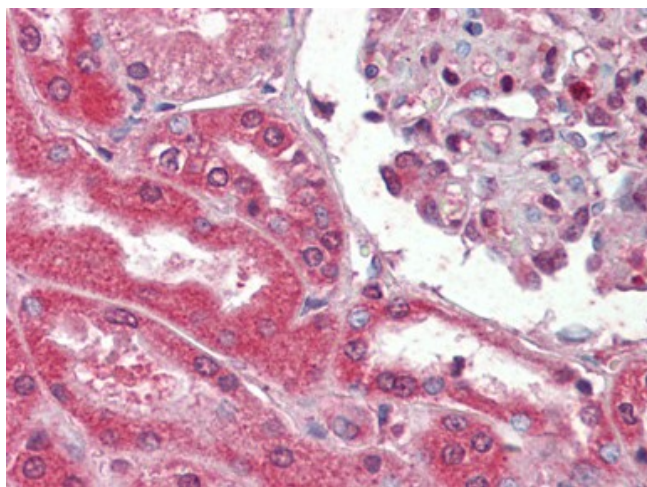
Product images:



Human Brain, Cerebellum (formalin-fixed, paraffin-embedded) stained with Collagen I antibody AP22813AF-N followed by biotinylated goat anti-rabbit IgG secondary antibody, alkaline phosphatase-streptavidin and chromogen.



Human Brain, Cortex (formalin-fixed, paraffin-embedded) stained with Collagen I antibody AP22813AF-N followed by biotinylated goat anti-rabbit IgG secondary antibody, alkaline phosphatase-streptavidin and chromogen.



Human Kidney (formalin-fixed, paraffin-embedded) stained with Collagen I antibody AP22813AF-N followed by biotinylated goat anti-rabbit IgG secondary antibody, alkaline phosphatase-streptavidin and chromogen.