

Product datasheet for **AP22807PU-N**

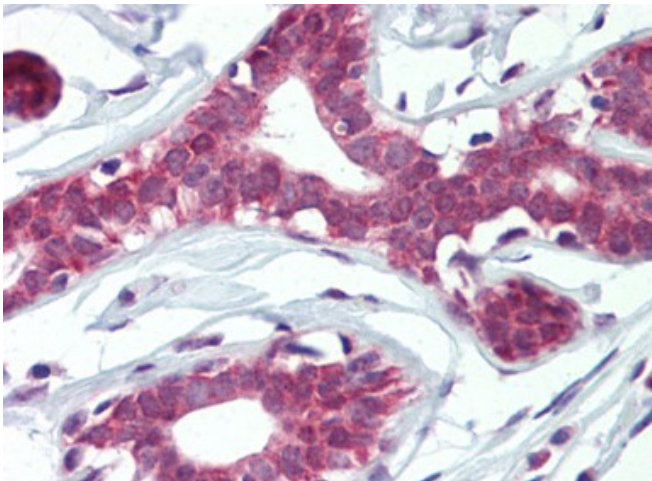
ELF4 Rabbit Polyclonal Antibody

Product data:

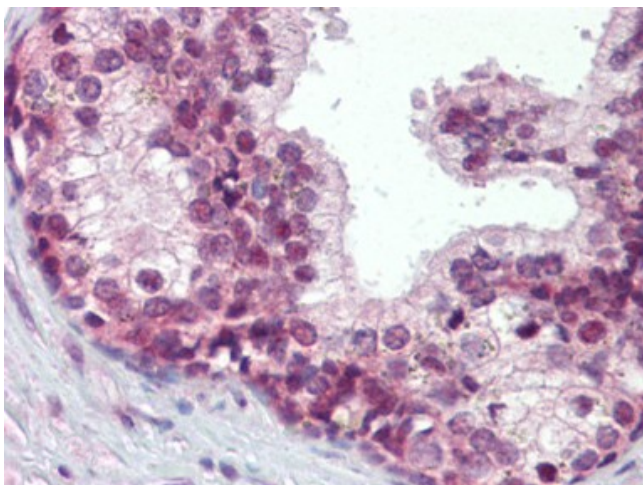
Product Type:	Primary Antibodies
Applications:	FC, IHC, WB
Recommended Dilution:	Flow Cytometry: 1/10 - 1/50. Immunohistochemistry on Paraffin Sections: 10 µg/ml. Western Blot: 1/1000.
Reactivity:	Human
Host:	Rabbit
Clonality:	Polyclonal
Immunogen:	ELF4 antibody was raised against kLH conjugated synthetic peptide selected from the Center region of human ELF4.
Specificity:	This antibody reacts to E74-like Factor 4 (ets Domain Transcription Factor) (ELF4).
Formulation:	PBS containing 0.09% sodium azide State: Ig Fraction State: Liquid purified Ig fraction
Concentration:	lot specific
Purification:	Ammonium Sulfate Precipitation
Conjugation:	Unconjugated
Storage:	Store the antibody undiluted at 2-8°C for one month or (in aliquots) at -20°C for longer. Avoid repeated freezing and thawing.
Stability:	Shelf life: one year from despatch.
Gene Name:	E74 like ETS transcription factor 4
Database Link:	Entrez Gene 2000 Human Q99607
Synonyms:	ELFR, MEF, E74-like factor 4, Myeloid Elf-1-like factor
Protein Families:	Transcription Factors



[View online »](#)

Product images:

Human Breast (formalin-fixed, paraffin-embedded) stained with ELF4 antibody followed by biotinylated goat anti-rabbit IgG secondary antibody, alkaline phosphatase-streptavidin and chromogen.



Human Prostate (formalin-fixed, paraffin-embedded) stained with ELF4 antibody followed by biotinylated goat anti-rabbit IgG secondary antibody, alkaline phosphatase-streptavidin and chromogen.