

Product datasheet for **AP22805PU-N**

Non Neuronal Enolase (ENO1) (178-205) Rabbit Polyclonal Antibody

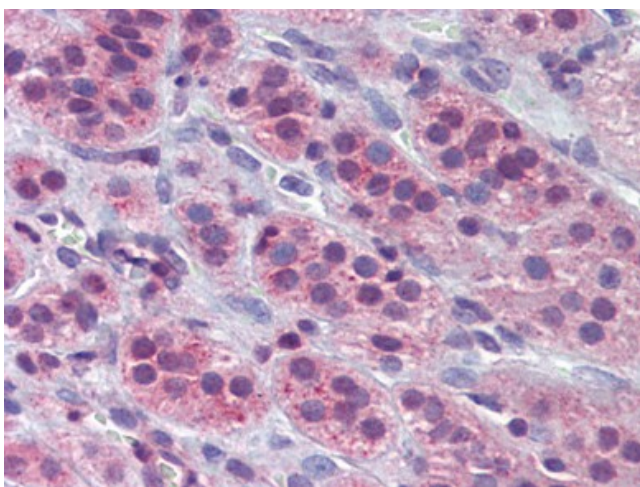
Product data:

Product Type:	Primary Antibodies
Applications:	FC, IF, IHC, WB
Recommended Dilution:	Flow Cytometry: 1/10 - 1/50. Immunofluorescence: 1/10 - 1/50. Immunohistochemistry on Paraffin Sections: 10 µg/ml. Western Blot: 1/1000.
Reactivity:	Human
Host:	Rabbit
Clonality:	Polyclonal
Immunogen:	This ENO1 antibody is generated from rabbits immunized with a KLH conjugated synthetic peptide between 178-205 amino acids from the Central region of human ENO1.
Specificity:	This antibody reacts to Alpha Enolase (ENO1).
Formulation:	PBS containing 0.09% sodium azide as preservative State: Ig Fraction State: Liquid purified Ig fraction
Purification:	Ammonium Sulfate Precipitation
Conjugation:	Unconjugated
Storage:	Store the antibody undiluted at 2-8°C for one month or (in aliquots) at -20°C for longer. Avoid repeated freezing and thawing.
Stability:	Shelf life: one year from despatch.
Gene Name:	enolase 1
Database Link:	Entrez Gene 2023 Human P06733

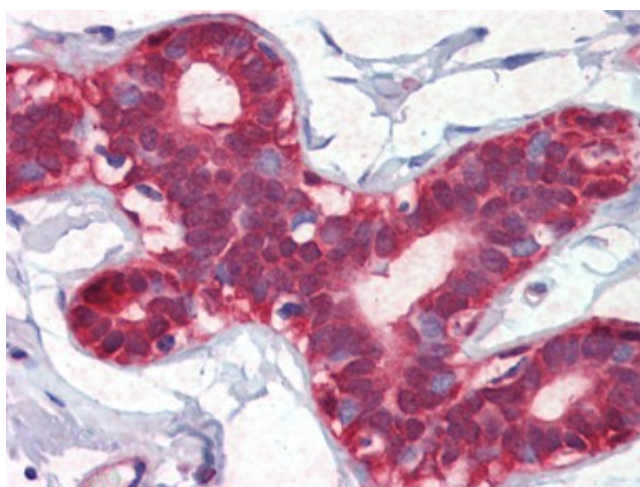


[View online »](#)

- Background:** This gene encodes alpha-enolase, one of three enolase isoenzymes found in mammals. Each isoenzyme is a homodimer composed of 2 alpha, 2 gamma, or 2 beta subunits, and functions as a glycolytic enzyme. Alpha-enolase in addition, functions as a structural lens protein (taucristallin) in the monomeric form. Alternative splicing of this gene results in a shorter isoform that has been shown to bind to the c-myc promoter and function as a tumor suppressor. Several pseudogenes have been identified, including one on the long arm of chromosome 1. Alpha-enolase has also been identified as an autoantigen in Hashimoto encephalopathy.
- Synonyms:** Enolase 1, ENO1L1 Non-neural enolase, NNE, Plasminogen-binding protein, MBP-1, MPB-1, MBPB1, MPB1
- Protein Families:** Druggable Genome, Transcription Factors
- Protein Pathways:** Glycolysis / Gluconeogenesis, Metabolic pathways, RNA degradation

Product images:

Human Adrenal (formalin-fixed, paraffin-embedded) stained with ENO1 antibody followed by biotinylated goat anti-rabbit IgG secondary antibody, alkaline phosphatase-streptavidin and chromogen.



Human Breast (formalin-fixed, paraffin-embedded) stained with ENO1 antibody followed by biotinylated goat anti-rabbit IgG secondary antibody, alkaline phosphatase-streptavidin and chromogen.