

Product datasheet for **AP22804PU-N**

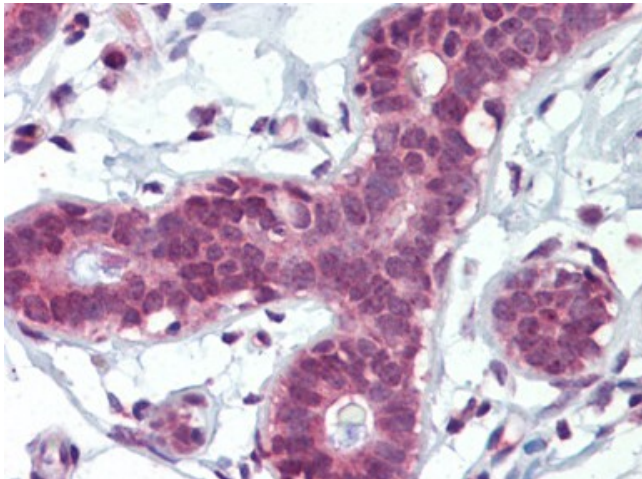
Non Neuronal Enolase (ENO1) (N-term) Rabbit Polyclonal Antibody

Product data:

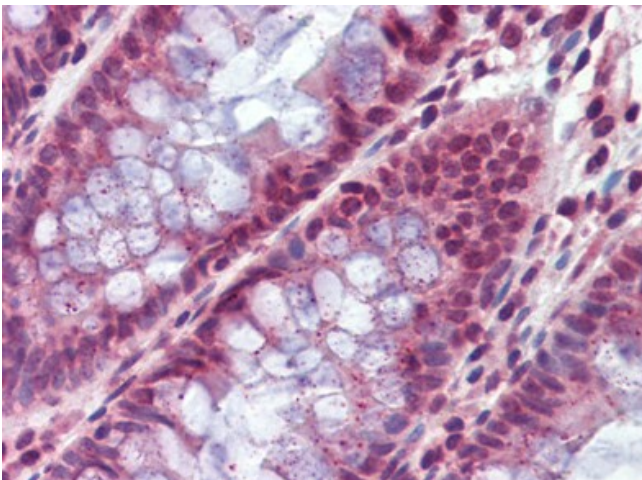
Product Type:	Primary Antibodies
Applications:	IHC, WB
Recommended Dilution:	Immunohistochemistry on Paraffin Sections: 10 µg/ml. Western Blot: 1/50 - 1/100.
Reactivity:	Human
Host:	Rabbit
Clonality:	Polyclonal
Immunogen:	kLH conjugated synthetic peptide selected from the N-terminal region of Human ENO1.
Specificity:	This antibody recognizes Alpha Enolase (ENO1).
Formulation:	PBS containing 0.09% Sodium Azide State: Ig Fraction State: Liquid purified Ig fraction
Purification:	Ammonium Sulfate Precipitation
Conjugation:	Unconjugated
Storage:	Store the antibody undiluted at 2-8°C for one month or (in aliquots) at -20°C for longer. Avoid repeated freezing and thawing.
Stability:	Shelf life: one year from despatch.
Gene Name:	enolase 1
Database Link:	Entrez Gene 2023 Human P06733
Synonyms:	Enolase 1, ENO1L1 Non-neural enolase, NNE, Plasminogen-binding protein, MBP-1, MPB-1, MBPB1, MPB1
Protein Families:	Druggable Genome, Transcription Factors
Protein Pathways:	Glycolysis / Gluconeogenesis, Metabolic pathways, RNA degradation



[View online »](#)

Product images:

Human Breast (formalin-fixed, paraffin-embedded) stained with ENO1 antibody AP22804PU-N followed by biotinylated goat anti-rabbit IgG secondary antibody, alkaline phosphatase-streptavidin and chromogen.



Human Colon (formalin-fixed, paraffin-embedded) stained with ENO1 antibody AP22804PU-N followed by biotinylated goat anti-rabbit IgG secondary antibody, alkaline phosphatase-streptavidin and chromogen.