

Product datasheet for **AP22800PU-N**

CD146 (MCAM) Rabbit Polyclonal Antibody

Product data:

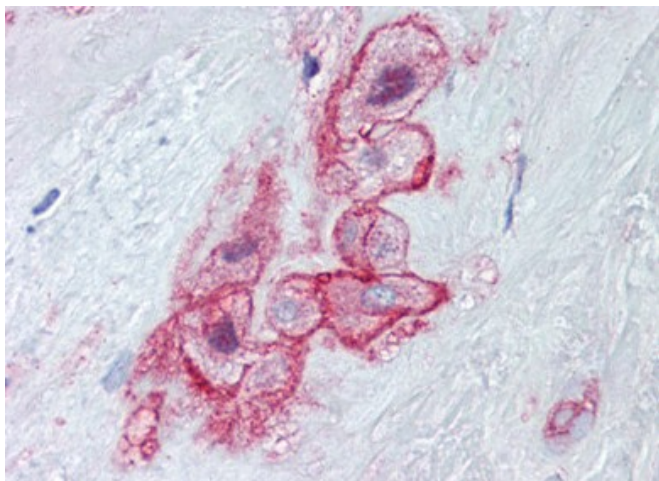
Product Type:	Primary Antibodies
Applications:	IHC, WB
Recommended Dilution:	Immunohistochemistry on Paraffin Sections: 10 µg/ml. Western Blot: 1/1000.
Reactivity:	Human
Host:	Rabbit
Clonality:	Polyclonal
Immunogen:	KLH conjugated synthetic peptide corresponding to amino acid residues surrounding Y641 of human MCAM.
Specificity:	This antibody reacts to Melanoma Cell Adhesion Molecule (MCAM/MUC18).
Formulation:	PBS containing 0.09% sodium azide State: Purified State: Liquid purified Ig fraction
Concentration:	lot specific
Purification:	Protein A Chromatography
Conjugation:	Unconjugated
Storage:	Store the antibody undiluted at 2-8°C for one month or (in aliquots) at -20°C for longer. Avoid repeated freezing and thawing.
Stability:	Shelf life: one year from despatch.
Gene Name:	melanoma cell adhesion molecule
Database Link:	Entrez Gene 4162 Human P43121
Background:	MCAM (also termed CD146 or MUC18) is a cell-adhesion molecule belonging to the immunoglobulin gene superfamily. It mediates cell-cell interaction through heterophilic Mel-CAM/ligand adhesion. MCAM has been shown to expressed widely in normal and neoplastic human tissues. MUC18 expression is increased during prostate cancer initiation (high grade PIN) and progression to carcinoma, and in metastatic cell lines and metastatic carcinoma.
Synonyms:	MCAM, MUC18, CD146



[View online »](#)

Protein Families: Druggable Genome, ES Cell Differentiation/IPS, Transmembrane

Product images:



Human Placenta (formalin-fixed, paraffin-embedded) stained with MCAM antibody followed by biotinylated goat anti-rabbit IgG secondary antibody, alkaline phosphatase-streptavidin and chromogen.