

## Product datasheet for **AP22793PU-N**

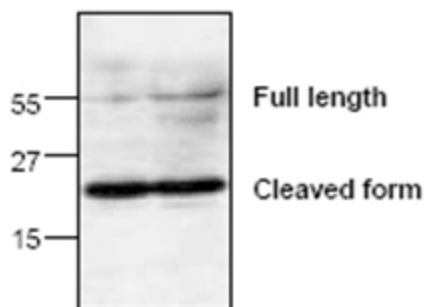
### MMP3 Rabbit Polyclonal Antibody

#### Product data:

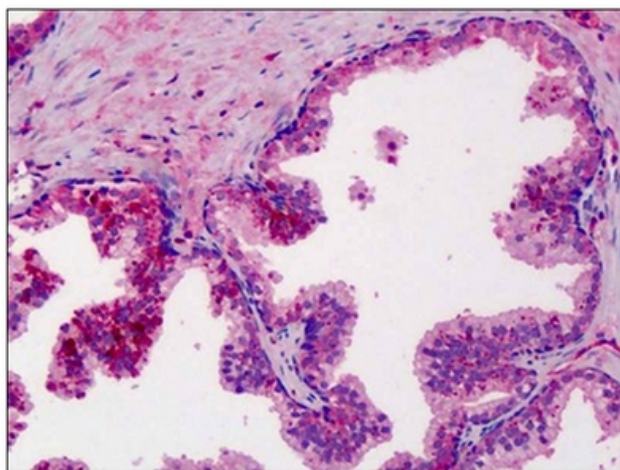
Product Type:	Primary Antibodies
Applications:	IHC, WB
Recommended Dilution:	<b>Immunohistochemistry on Paraffin Sections:</b> 5 µg/ml. <b>Western Blot:</b> 0.5 - 4 µg/ml.
Reactivity:	Equine, Human, Mouse, Rabbit, Rat
Host:	Rabbit
Clonality:	Polyclonal
Immunogen:	Synthetic peptide surrounding amino acid 465 of Rat MMP-3
Specificity:	The antibody recognizes the MMP-3. The antibody detects the 55 kD full length and the 21 kD cleavage fragment of MMP-3.
Formulation:	PBS containing 30% Glycerol, 0.5% BSA and 0.01% Thimerosal State: Purified State: Liquid purified Ig fraction
Concentration:	lot specific
Conjugation:	Unconjugated
Storage:	Store the antibody undiluted at 2-8°C for one month or (in aliquots) at -20°C for longer. Avoid repeated freezing and thawing.
Stability:	Shelf life: one year from despatch.
Gene Name:	matrix metalloproteinase 3
Database Link:	<a href="#">Entrez Gene 17392 Mouse</a> <a href="#">Entrez Gene 171045 Rat</a> <a href="#">Entrez Gene 4314 Human</a> <a href="#">P08254</a>
Background:	MMP3 is a Metalloproteinase M10A type protease. Human fibroblast stromelysin/MMP3 is a proteoglycanase with a wide range of substrate specificities. It is a secreted metalloprotease produced predominantly by connective tissue cells. MMP3 is capable of degrading proteoglycan, fibronectin, laminin, and type IV collagen. Expression has been documented in breast carcinoma, wound healing and chronic inflammatory diseases.
Synonyms:	Stromelysin-1, SL-1, Matrix metalloproteinase-3, Transin-1, MMP3, STMY1
Protein Families:	Druggable Genome, Protease



[View online »](#)

**Product images:**

Western Blot analysis of MMP3 expression with Jurkat cell lysate. Both full length (55kD) and cleaved form (21kD) detected.



Human Prostate: Formalin-Fixed, Paraffin-Embedded (FFPE).