

Product datasheet for **AP22792PU-N**

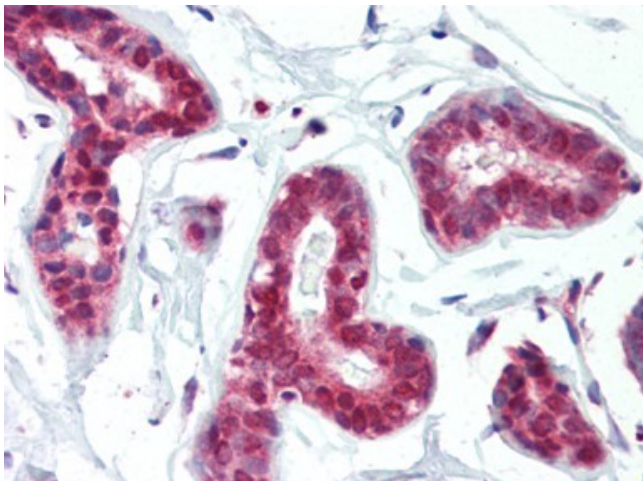
PRMT1 (C-term) Rabbit Polyclonal Antibody

Product data:

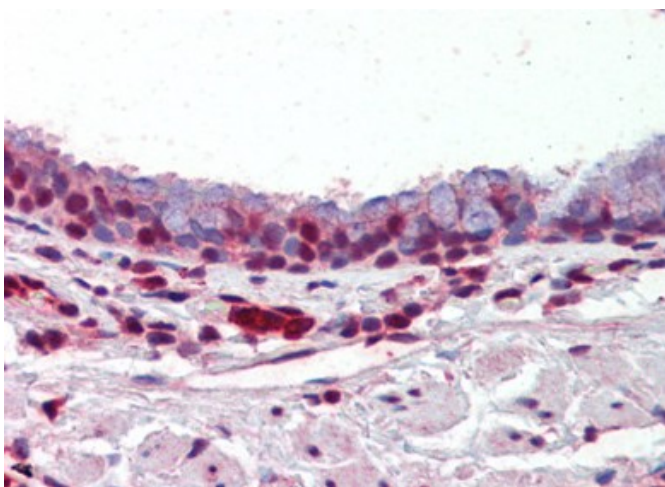
Product Type:	Primary Antibodies
Applications:	IHC, WB
Recommended Dilution:	Immunohistochemistry on Paraffin Sections: 5 µg/ml. Western Blot: 1/1000.
Reactivity:	Human, Mouse
Host:	Rabbit
Clonality:	Polyclonal
Immunogen:	PRMT1 antibody was raised against kLH conjugated synthetic peptide selected from the C-terminal region of human PRMT1.
Specificity:	This antibody reacts to Protein Arginine N-methyltransferase 1 (PRMT1).
Formulation:	PBS containing 0.09% sodium azide State: Ig Fraction State: Liquid purified Ig fraction
Concentration:	lot specific
Purification:	Ammonium Sulfate Precipitation
Conjugation:	Unconjugated
Storage:	Store the antibody undiluted at 2-8°C for one month or (in aliquots) at -20°C for longer. Avoid repeated freezing and thawing.
Stability:	Shelf life: one year from despatch.
Gene Name:	protein arginine methyltransferase 1
Database Link:	Entrez Gene 15469 Mouse Entrez Gene 3276 Human Q99873
Synonyms:	HMT2, HRMT1L2, IR1B4



[View online »](#)

Product images:

Human Breast (formalin-fixed, paraffin-embedded) stained with PRMT1 antibody followed by biotinylated goat anti-rabbit IgG secondary antibody, alkaline phosphatase-streptavidin and chromogen.



Human Lung, Respiratory Epithelium (formalin-fixed, paraffin-embedded) stained with PRMT1 antibody followed by biotinylated goat anti-rabbit IgG secondary antibody, alkaline phosphatase-streptavidin and chromogen.