

## Product datasheet for **AP22788PU-N**

### **PIM3 (C-term) Rabbit Polyclonal Antibody**

#### **Product data:**

Product Type:	Primary Antibodies
Applications:	IHC, WB
Recommended Dilution:	<b>Immunohistochemistry on Paraffin Sections:</b> 10 µg/ml. <b>Western Blot:</b> 1/1000.
Reactivity:	Human, Mouse
Host:	Rabbit
Clonality:	Polyclonal
Immunogen:	KLH conjugated synthetic peptide between 259-288 amino acids from the C-terminal region of human PIM3.
Specificity:	This antibody reacts to Proto-Oncogene Serine/Threonine Protein Kinase PIM-3 (KID-1) (PIM3).
Formulation:	PBS containing 0.09% sodium azide State: Purified State: Liquid purified Ig fraction
Purification:	Ammonium sulfate precipitation
Conjugation:	Unconjugated
Storage:	Store the antibody undiluted at 2-8°C for one month or (in aliquots) at -20°C for longer. Avoid repeated freezing and thawing.
Stability:	Shelf life: one year from despatch.
Gene Name:	Pim-3 proto-oncogene, serine/threonine kinase
Database Link:	<a href="#">Entrez Gene 223775 Mouse</a> <a href="#">Entrez Gene 415116 Human</a> <a href="#">Q86V86</a>
Background:	KID-1 is an immediate early gene in the PIM protein kinase subfamily. KID-1 is induced by depolarization in PC12 cells and in brain. In brain, KID-1 expression is induced after generalized seizures and is limited to specific areas of the hippocampus and temporal lobe. The PIM kinases are important mediators of the neuronal plasticity following synaptic activity, which is necessary for brain development and for learning and memory. The PIM kinases are induced by membrane depolarization, which results in the activation of the Ca <sup>2+</sup> /calmodulin kinase- and adenylyl cyclase-dependent signal transduction pathways that are involved in the synaptic plasticity.

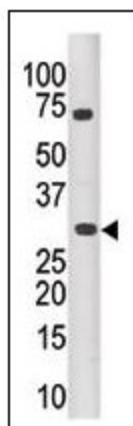


[View online »](#)

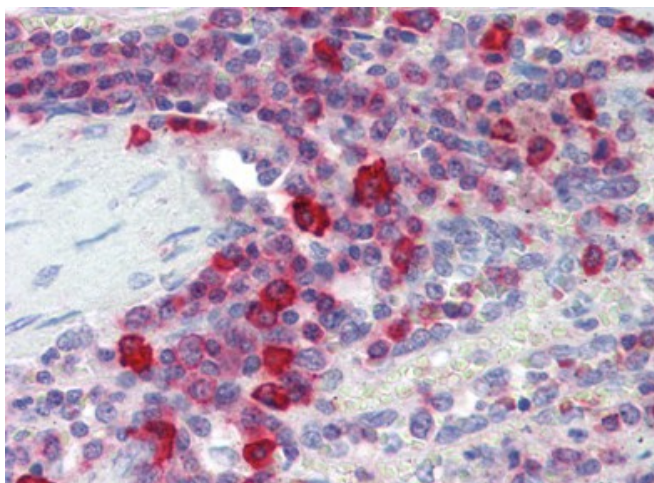
Synonyms: PIM-3

Protein Families: Druggable Genome, Protein Kinase

### Product images:



AP22788PU-N is used in Western blot to detect PIM3 in mouse kidney tissue lysate.



Human Spleen (formalin-fixed, paraffin-embedded) stained with PIM3 antibody AP22788PU-N followed by biotinylated goat anti-rabbit IgG secondary antibody, alkaline phosphatase-streptavidin and chromogen.